



# ALLinONE Solution

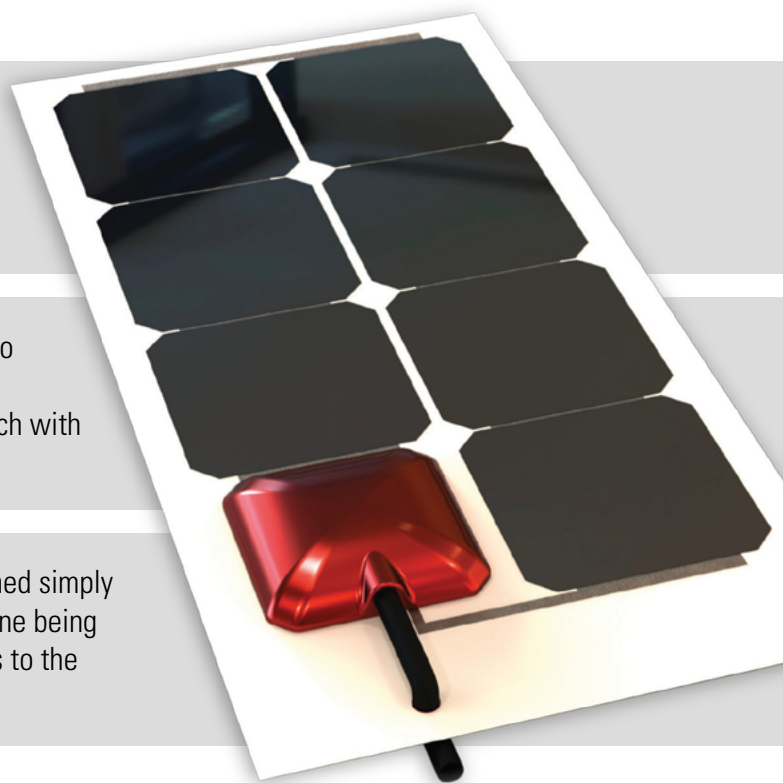
It's never been  
*so easy to get the most*  
from solar cells

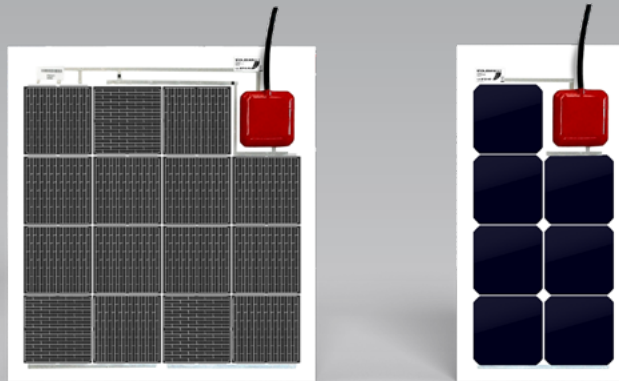
Just connect the output cable to your battery.

**Solar panel and charge controller.** To make solar energy simpler, suitable for the enthusiast as well as the professional user.

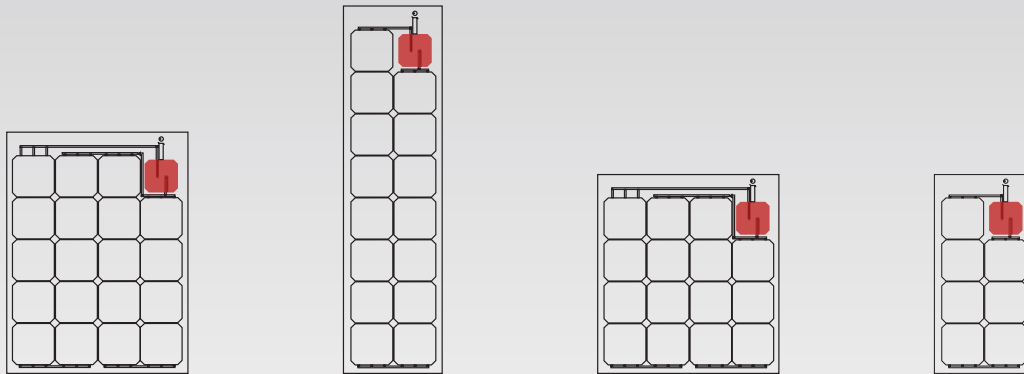
All the electronics you need are already packed into the rugged waterproof box: a sophisticated **MPPT controller** capable of boosting the voltage to match with your battery pack.

With the ALLinONE solution, panels can be combined simply by connecting them directly to your battery, each one being **completely independent** from the others, thanks to the integrated charge controller.

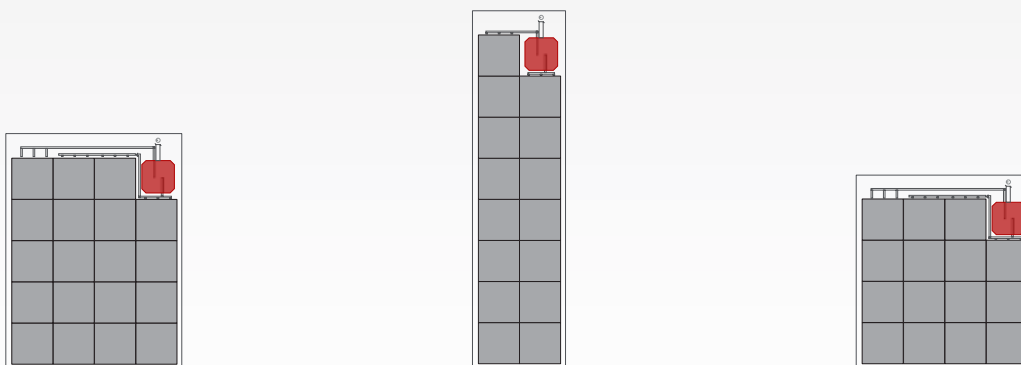




# The panels



	Length (mm)	Width (mm)	Thickness (mm)	Weight (kg)	Peak Power (W)	Battery Voltage (V)	Maximum Current (A)	N. of Cells
<b>SP 19 AiO</b>	65	12/24	5/2,5	728	546	15	1,1	19
<b>SP 15 L AiO</b>	51	12/24	4/2	1109	292	15	0,9	15
<b>SP 15 Q AiO</b>	51	12/24	4/2	601	546	15	0,9	15
<b>SP 7 AiO</b>	24	12/24	2/1	600	292	15	0,6	7



	Length (mm)	Width (mm)	Thickness (mm)	Weight (kg)	Peak Power (W)	Battery Voltage (V)	Maximum Current (A)	N. of Cells
<b>SR 19 AiO</b>	95	12/24	8/4	881	694	15	1,7	19
<b>SR 15 L AiO</b>	75	12/24	6/3	1366	371	15	1,3	15
<b>SR 15 Q AiO</b>	75	12/24	6/3	719	694	15	1,3	15