

**AEROHEAT® – reliable and robust technology for everyday use**

The model types AEROHEAT® D-2 and D-4 stand for German TÜV-certified and field experienced devices with a building-type permit E1 (Deutsches Kraftfahrtbundesamt) in accordance with EU standard ECE R122.

Manufactured to the highest quality standards, these devices are made for standard built-in applications. Generally in the lorry-, ship-, and container-building industry tailored solutions are often required, but these can be expensive.

AEROHEAT® offers a genuine, flexible alternative for the industry: special builds can also be developed and manufactured at an attractive price as single-piece solutions or small series productions.

Special builds start with AEROHEAT® – we would be glad to advise you.

**The economical diesel air heater – as a standard or special build.**



Timer,  
electronic control,  
and checking device.  
Order No. 20111

Manual control.  
Electronic  
temperature-level  
control device.  
Robust and  
easy handling.  
Order No. 20112



GSM control as well as remote control available.  
For separate diesel tank and further equipment,  
please see: [www.komp-gmbh.de/aeroheat](http://www.komp-gmbh.de/aeroheat)

Manufacturer:



KOMP GmbH | Technical Solutions  
33659 Bielefeld | Germany  
Tel.: +49-521-9497-9490

[www.komp-gmbh.de](http://www.komp-gmbh.de) | [info@komp-gmbh.de](mailto:info@komp-gmbh.de)

Dealer | Workshop

Legal information: © KOMP GmbH

GTCs see [www.komp-gmbh.de/aeroheat](http://www.komp-gmbh.de/aeroheat); printing mistakes and errors reserved



**AEROHEAT® D-2**  
(Max. ~ 2,000 W)

**AEROHEAT® D-4**  
(Max. ~ 4,000 W)

## DIESEL AIR HEATER

independent usage as

Park heater | Air blower

Cabin heater | Construction site heater

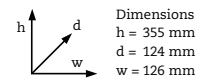
Frost protection heater for goods | Mobile heater

## AEROHEAT® –

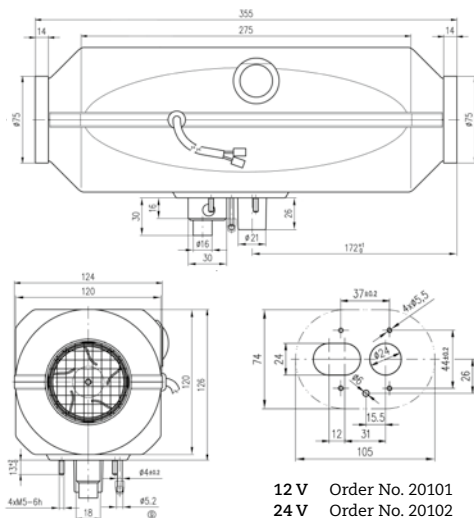
reliable and robust technology  
for everyday use



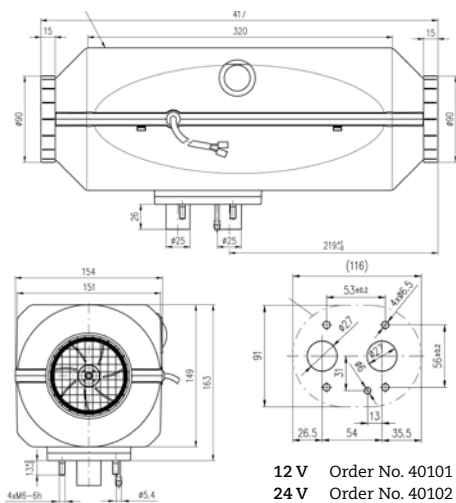
## AEROHEAT®D-2



D-2 (Max. ~ 2,000 W)



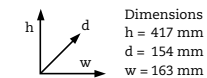
D-4 (Max. ~ 4,000 W)



Maximum thermal output	1,900 W ± 5 %
Minimal thermal output	900 W ± 5 %
Nominal voltage	12 V / 24 V
Operating voltage range – 12 V	10.5 V–15 V
Operating voltage range – 24 V	21 V–30 V
Power input – starting	Max. 100 W
Power input – operational	Max. 35 W
Fuel	Diesel oil
Fuel consumption – maximum	0.22 l/h ± 3 %
Fuel consumption – minimum	0.10 l/h ± 3 %
Temperature range in the heated area	15 °C–30 °C
Volume of hot air at pressure of 1013 hPa	70 cu. m/h
Control	Continuous from min. to max.
Operational temperature range	From -40 to +65 °C



## AEROHEAT®D-4



Maximum thermal output	3,800 W ± 5 %
Minimal thermal output	1,300 W ± 5 %
Nominal voltage	12 V / 24 V
Operating voltage range – 12 V	10.5 V–15 V
Operating voltage range – 24 V	21 V–30 V
Power input – starting	Max. 120 W
Power input – operational	Max. 40 W
Fuel	Diesel oil
Fuel consumption – maximum	0.46 l/h ± 3 %
Fuel consumption – minimum	0.17 l/h ± 3 %
Temperature range in the heated area	15° C–30 °C
Volume of hot air at pressure of 1013 hPa	110 cu. m/h
Control	Continuous from min. to max.
Operational temperature range	From -40 to +65 °C

