



CK Cleat Range, performance cleating for Control Lines

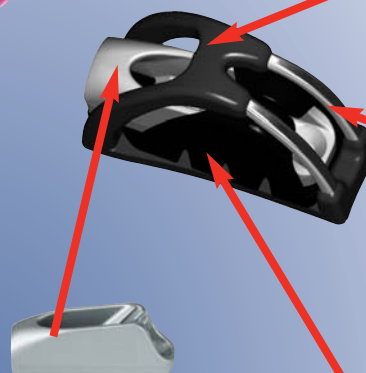
- Patented Keeper keeps the rope out of the teeth when you want the rope to run free.
- Rear fairlead of the Cage allows rope to be cleated from up to 70°.
- Positive click when rope is cleated.
- Excellent value when compared to alternative cleating methods.
- Hard anodised or silver finish on the cleats.

CL830CKC Silver CL830CKCAN Hard Anodised

Side-fixing cage allows cleat to be used as a direct replacement to cams.



Cage provides alignment and cleating from a distance.



Alloy cleat.
No moving parts.
Positive rope grip.



Rear fairlead gives cleating angles up to 70°.



Keeper automatically keeps rope in or out of the cleat.



CL825CKC Silver CL825CKCAN Hard Anodised

Two cleats pre-assembled onto a tapered base. Use as a new fitting or to replace CL211 Mk1 without drilling new holes.



CL832CKC Silver CL832CKCAN Hard Anodised

Use as a new fitting or to replace CL211 Mk2 without drilling new holes.

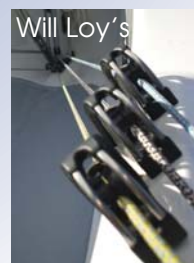


CL833CKC Silver CL833CKCAN Hard Anodised

Use as a new fitting or to replace CL211 Mk1 without drilling new holes.

Will Loy's Testimonial

"I am well chuffed with their performance so far though I should not be surprised. Took the boat out two sundays ago in very strong winds and the cleats held true. Racing was cancelled but last weekend I recorded a couple of bullets in the competitive solo fleet at Littleton S.C. Getting a fair amount of interest. People seem surprised when I mention they are Clamcleat,® rope cleats. They like the positive feel that the Keeper gives"





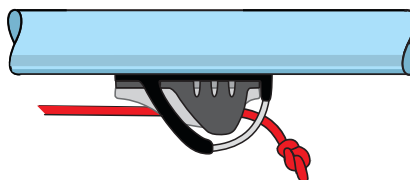
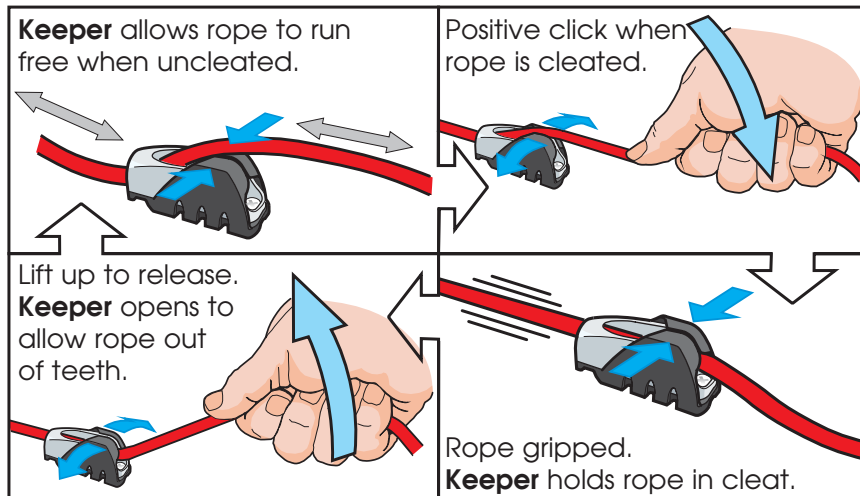
CK Cleat Range, performance cleating for Control Lines

High quality, marine grade, stainless steel, aluminium and engineering plastics.

Cleats available in silver or hard anodised finish.



Cage provides alignment and cleating from a distance.



Keeper holds lightly loaded lines in the jaws of a cleat even when mounted upside down.

CL825CKC Silver CL825CKCAN Hard Anodised



3-6 mm	5mm	4.8 mm	150 gms
1/8-1/4"	#10, 3/16"	N°10	5.3 ozs

CL830CKC Silver CL830CKCAN Hard Anodised



3-6 mm	4 mm	4.2 mm	58 gms
1/8-1/4"	#8, 5/32"	N°8	2.0 ozs

CL832CKC Silver CL832CKCAN Hard Anodised



3-6 mm	4 mm	4.2 mm	51 gms
1/8-1/4"	#8, 5/32"	N°8	1.8 ozs

CL833CKC Silver CL833CKCAN Hard Anodised



3-7 mm	5 mm	4.8 mm	75 gms
1/8-1/4"	#10, 3/16"	N°10	2.7 ozs