



## SmartPlug Products

**16**<sup>AMP</sup>  
230V

&

**32**<sup>AMP</sup>  
230V

### SAFE - ELIMINATES OVERHEATING

- 20x more electrical contact area than the twist-type connector
- Multi-point Locking System - Side Levers & Cover Lock
- Solid Sleeve Connection - Eliminates Pressure on Pins/Clips
- Triple Weatherproof Seals

### EASY TO USE

- No L-Shaped Pin - Easy to Use at Night
- Plugs Straight In - No Twisting Required
- No misalignment issues
- No cross threading problems

### 16AMP CONNECTOR & INLET

Our Non-Metallic Inlets offer the same high-quality electrical components as our award winning stainless steel products.

#### WEATHERPROOF

Face gasket seals against inlet sleeve to eliminate dirt & moisture exposure on electrical pins.

#### LOCKING FEATURE

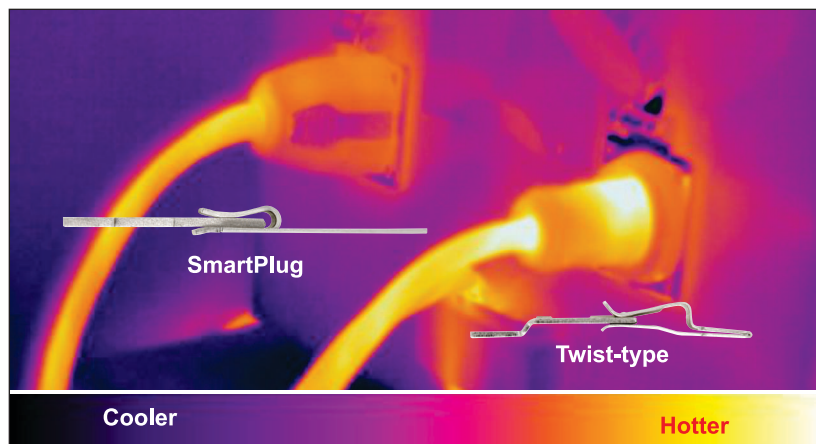
Spring loaded side levers automatically lock into sides of inlet housing

#### RETRO-FIT CORD SEAL

Use your existing cord

#### CONNECTOR BODY SHAPE

Sleeve design fits snugly within inlet, removing all tension from the electrical connection



#### LOCKING FEATURE

Inlet cover snaps into slots of inlet housing

#### WEATHERPROOF

Face gasket creates a seal when closed

#### POWER INDICATOR LENS

Clear lens illuminates when cordset is powered

#### ELECTRICAL PINS

Straight pins with 20x electrical contact area than twist type connectors

#### EASE OF USE

Unique plug body shape that only goes in the right way! Easy orientation with no chance of misalignment - even in the dark! Plugs straight in - locks & seals automatically



SmartPlug Systems, LLC  
www.smartplug.com



Assembled in the USA

