



THOUSANDS  
OF UPDATES

**NAVIONICS®** 

**SAFER  
SMARTER  
EASIER**



© Jean-Baptiste D'ENQUIN



[navionics.com](http://navionics.com)



**SAFER** We constantly enhance our charts to ensure they are the most accurate and detailed. Take advantage of daily updates.

**SMARTER** Now that plotters can connect to mobile devices and to Navionics, we are able to deliver, through our Boating app, unique content and valuable services supported by real-time, crowd-sourced data.

**EASIER** Our products are designed to be intuitive and surprisingly easy to use. With as little as one click, you can set a course in seconds and be on your way.

### NAUTICAL CHART



A **robust chart** resource trusted by **boaters** worldwide.

### SONARCHART™



The **0.5 m HD bathymetry map** that reflects ever-changing conditions.

### COMMUNITY EDITS



**Valuable localized** chart data **contributed** by Boating app users.

### ENHANCE YOUR SONARCHART™

Sonar logs recorded by any boater with a wide variety of GPS plotters and mobile devices are continuously integrated with existing data to ensure that SonarChart™ becomes more precise. About one week after tracks are sent to Navionics, you can download the new SonarChart™ to your plotter card, to your Navionics Boating app, and see it on navionics.com. Visit our website to find out how simple it is.



## ADVANCED FEATURES

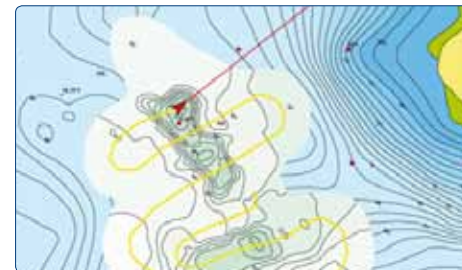


### DOCK-TO-DOCK AUTOROUTING

Quickly calculates a detailed route, even through narrow passages and channels, based on chart data and navigation aids.

### SONARCHART™ LIVE

Allows you to create new personal 0.5 m HD bathymetry maps that display in real time while navigating.



### ADVANCED MAP OPTIONS

Customize views of Navionics charts to highlight shallow areas, target fishing range and adjust SonarChart™ contour density.

### PLOTTER SYNC

Transfer chart updates, routes and markers from your Boating app.



**Daily chart updates and advanced features are included for one year upon registration.**

### BOATING APP

The same detailed charts and advanced features as on your plotter.

**2-WEEK FREE TRIAL!**







## For demanding boaters and serious anglers



Head out with confidence! On Platinum+ cards, all the same marine and lakes content and advanced features found in Navionics+ are augmented with **satellite overlay**, **3D View**, and **panoramic photos** to provide the ultimate situational awareness.

Designed with the most demanding boaters and serious anglers in mind, these additional viewing options can be used on a growing number of GPS plotters.

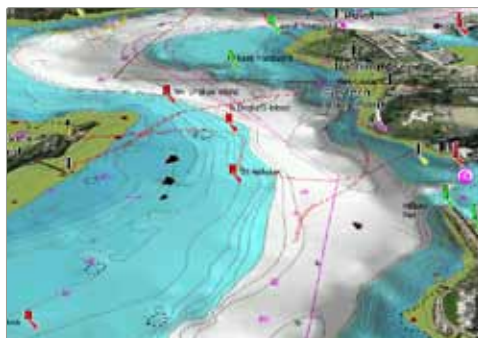
### SATELLITE OVERLAY

Especially helpful in congested ports and marinas, crisp satellite overlay can also reveal hidden features such as backwater channels that might hold fish.



### 3D VIEW

Customize your chart to highlight key features. Enjoy a broad overview, easily pan around the map, and zoom in on any area you are interested in.



### PANORAMIC PHOTOS

Heading into a new marina can be less stressful when you have an understanding of the layout that only a picture can provide.



**Daily chart updates and advanced features are included for one year upon registration.**

## YOUR ONE-YEAR SUBSCRIPTION

includes daily updates and advanced features

**Register your card** to activate your subscription, then routinely **update your charts** to enjoy the very latest content.

We make **around 2,000 updates** to our Nautical Chart every day, so that Navionics customers can have the most current charts each time they go boating. These include new Hydrographic Office charts, Notices to Mariners, new publications, our own surveys, and reports from users. Several thousand updates are also made to SonarChart™ and Community Edits.

Updated charts are available every day via a simple download from [navionics.com](http://navionics.com), either by plugging your card into a PC or wirelessly with Plotter Sync.

And when the chart updates subscription on your card expires, choose one of the following options to **easily renew it**.

### AT YOUR DEALER

#### NAVIONICS UPDATES

This card offers the same content as Navionics+ at a discounted price. It requires activation with an old Navionics Silver, Gold, Navionics+ or a card from another brand.



#### PLATINUM+

Platinum+ charts can be updated at a 50% discount.

Gold or Navionics+ charts may be exchanged for a new Platinum+ chart with a 30% discount.



### ONLINE

#### RENEW THE EASY WAY!

When the chart update subscription on your registered card expires, go to [navionics.com](http://navionics.com) and order a new card at **up to 50% off**. We'll ship it to you preloaded and activated with one year of daily updates and advanced features.

Alternatively, renew your subscription online with the same discount, then download the latest content and services to your old card.

If you have a Platinum+ card, be aware that panoramic photos and satellite overlay cannot be updated online.



#### HAVE YOU GOT THE BOATING APP?

Updating charts is simple. Open the app, tap *Menu* > *Update All*.

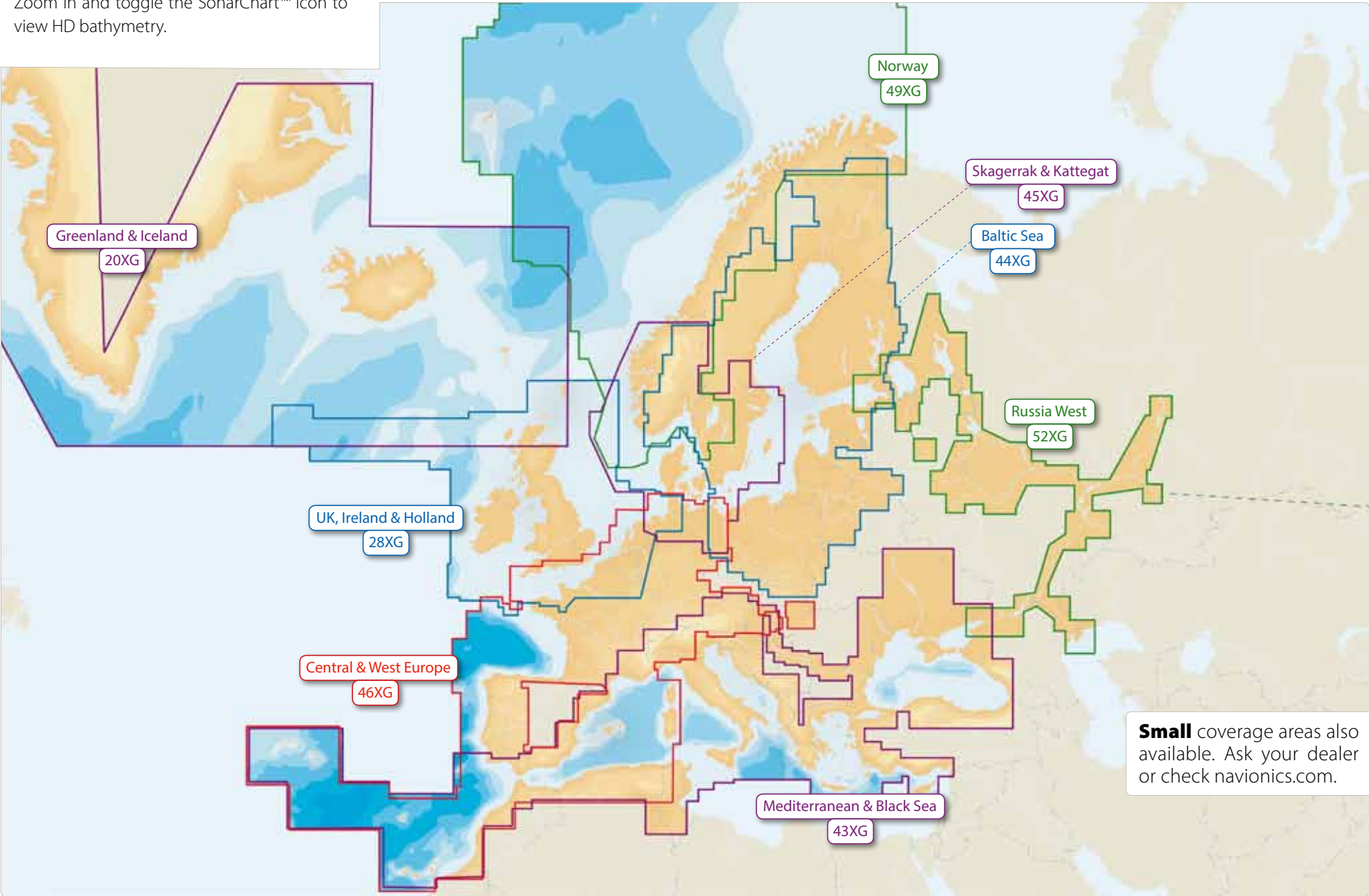
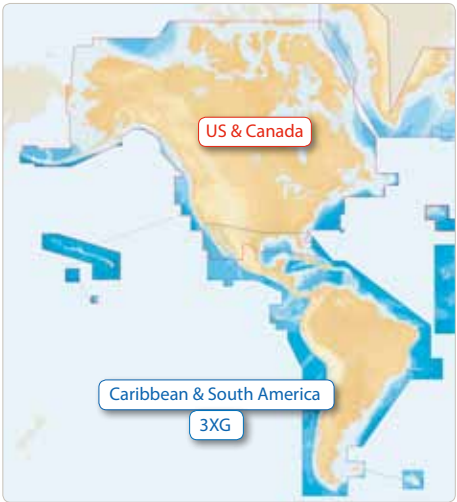
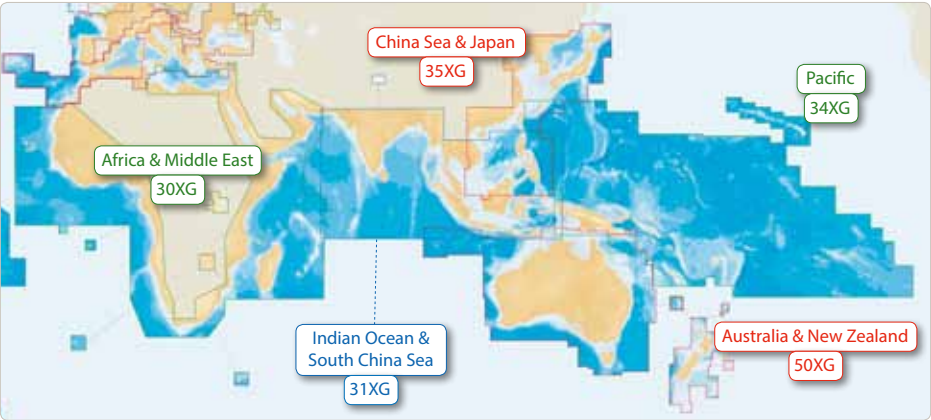
Chart Viewer

View our charts online for free!



Check chart details and see if your area has been updated. Go to [navionics.com/webapp](https://navionics.com/webapp). Zoom in and toggle the SonarChart™ icon to view HD bathymetry.

Navionics+ Large

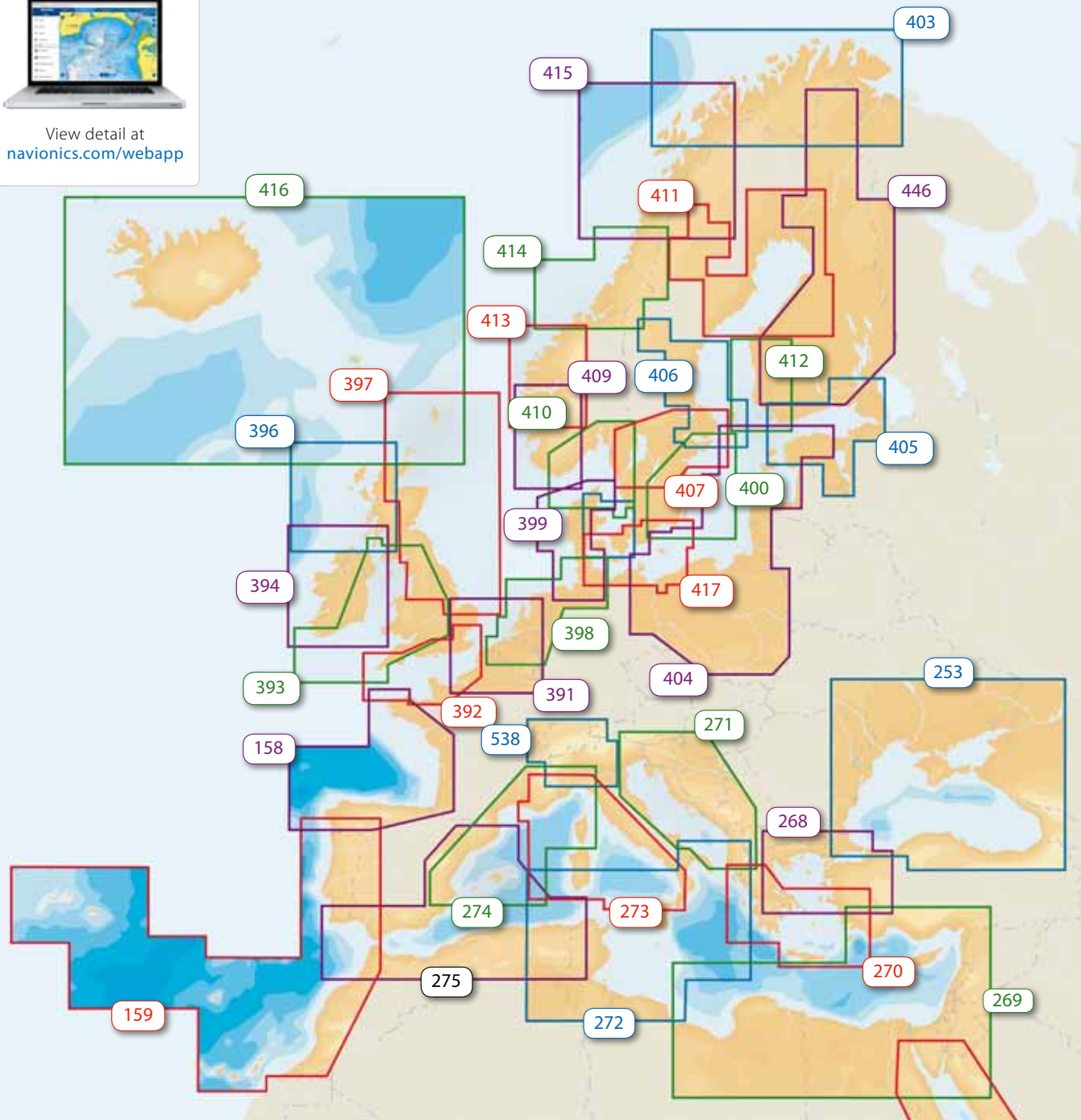


**Small** coverage areas also available. Ask your dealer or check [navionics.com](https://navionics.com).





View detail at  
[navionics.com/webapp](http://navionics.com/webapp)



## EUROPE

5P158XL Bay of Biscay/Spain  
5P159XL Portugal to Azores  
5P253XL Black Sea\*  
5P268XL North Aegean Sea  
5P269XL Mediterranean S. E.  
5P270XL South Aegean Sea  
5P271XL Adriatic Sea  
5P272XL Central Mediterranean  
5P273XL Tyrrhenian Sea  
5P274XL Mediterranean N. W.

5P275XL Mediterranean S. W.  
5P391XL Strait of Dover  
5P392XL English Channel  
5P393XL Irish Sea  
5P394XL Ireland  
5P396XL Scotland West  
5P397XL Eastern UK  
5P398XL Hamburg/Dunkerque  
5P399XL Germany W./Denmark W.  
5P400XL Stockholm to Ahus

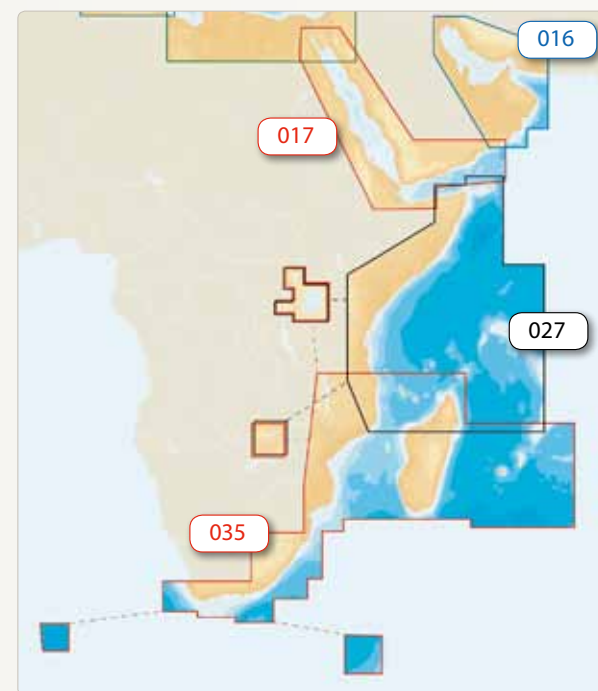
5P403XL Northern Norway  
5P404XL Estonia to Poland  
5P405XL Gulf of Finland  
5P406XL Gustavsvik/Aaland I.  
5P407XL Swedish Lakes\*  
5P409XL Arendal-Sognefjorden  
5P410XL Skagerrak  
5P411XL Gulf of Bothnia  
5P412XL Kasko to Vormsi  
5P413XL Kristiansund to Bergen

5P414XL Nesna to Smøla  
5P415XL Ringvassøy to Nesna  
5P416XL Iceland to Faeroe I.\*  
5P417XL German E./Sweden S.  
5P445XL Denmark E./Sweden W.  
5P446XL Finnish Lakes\*  
5P538XL Cen. European Lakes\*

## PACIFIC

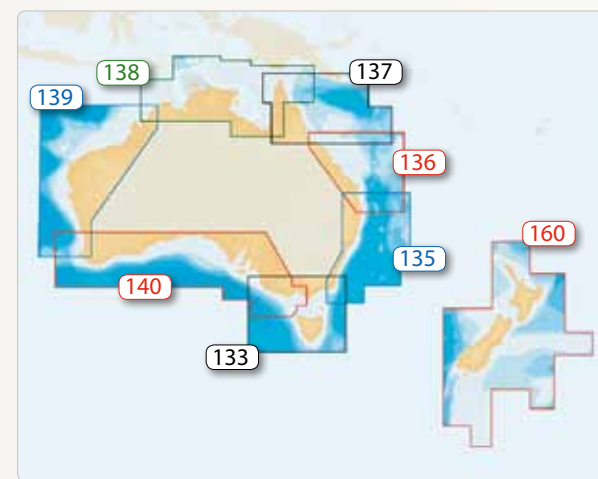
8P133XL Melbourne/Tasmania  
8P135XL Brisbane to Sydney  
8P136XL Queensland Australia  
8P137XL Australia North East  
8P138XL Northern Australia  
8P139XL Beale B. to Perth  
8P140XL Perth to Melbourne  
8P160XL New Zealand

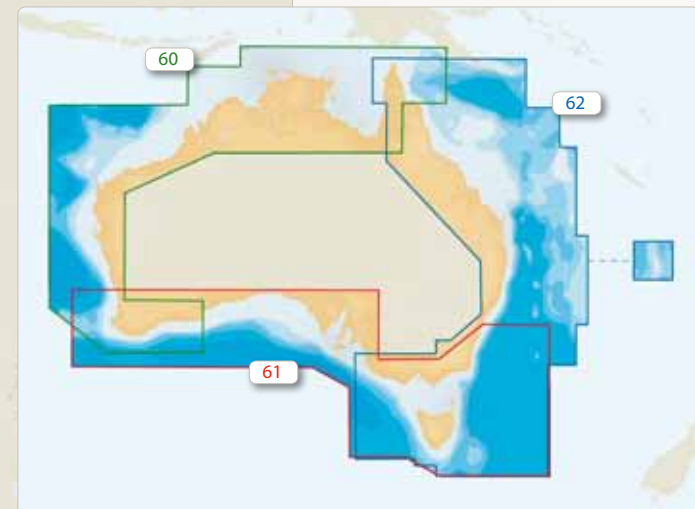
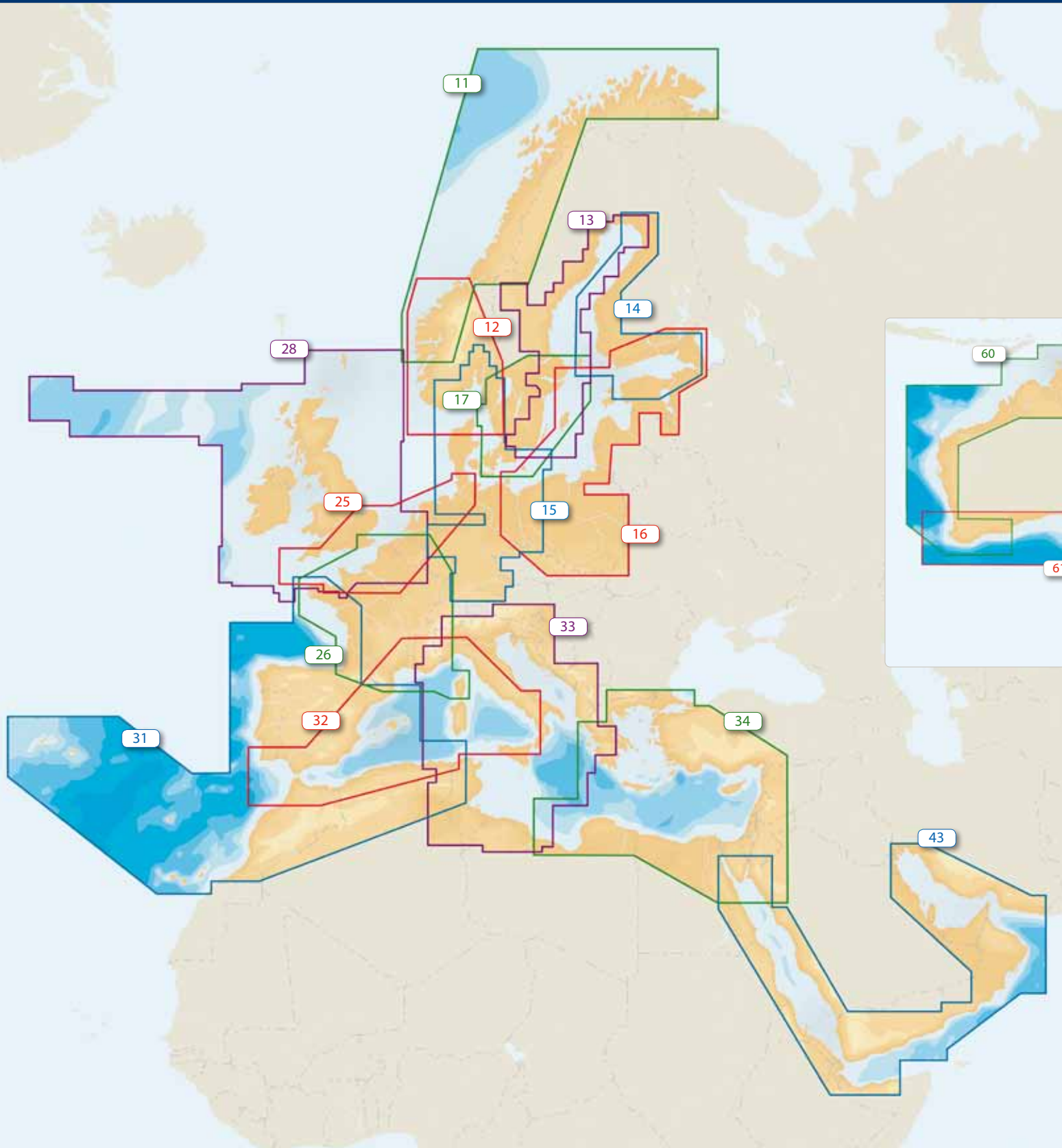
\* Limited Platinum+ features.



## MIDDLE EAST & AFRICA

6P027XL N. Madagascar/Somalia\*  
6P035XL Africa S.E./Madagascar\*  
7P016XL Persian Gulf/Oman Gulf\*  
7P017XL Red Sea/Gulf of Aden\*





## PACIFIC

60P+ Australia North & West  
61P+ Australia South  
62P+ Australia E & N

\* Limited Platinum+ features.



View detail at  
[navionics.com/webapp](https://navionics.com/webapp)



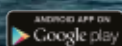


WE START WHERE THE ROAD ENDS™

**Head out with confidence!** Navionics has been changing the way people navigate since 1984. Our continuous development of innovative marine technology has made us the most award-winning company in our category. With Navionics, you have access to the largest privately-held database of marine and lake charts in the world. Compare our charts to any other and see why **more boaters prefer Navionics.**



© Jean-Baptiste D'ENQUIN



Regione Toscana



REPUBBLICA ITALIANA



Unione Europea

The technology used to develop **SonarChart™** was co-financed by the European Fund for Regional Development

Navionics electronic charts, based on official charts as well as on other data sources, are an aid to navigation designed to facilitate the use of authorized government charts, not to replace them. Only official government charts and notices to mariners contain all information needed for the safety of navigation and, as always, the captain is responsible for their prudent use.

NAVBLK/INT/1710