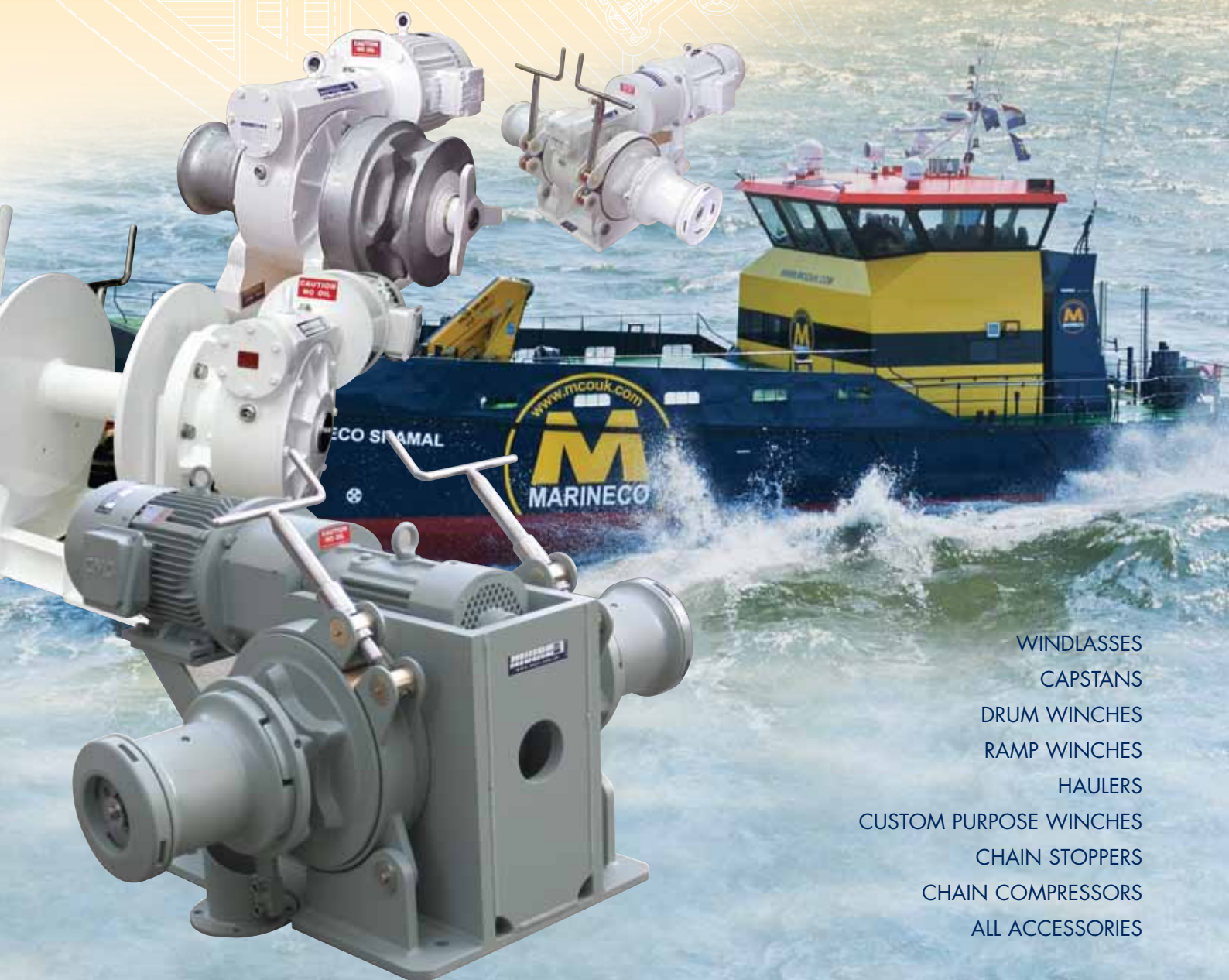


MUIR

SINCE 1968

If it's commercial...it's Muir



WINDLASSES
CAPSTANS
DRUM WINCHES
RAMP WINCHES
HAULERS
CUSTOM PURPOSE WINCHES
CHAIN STOPPERS
CHAIN COMPRESSORS
ALL ACCESSORIES

BUILDING WINCHES FOR OVER 45 YEARS...HERE FOR THE LONG HAUL

www.muir.com.au



THE WORLD POWER IN ANCHORING SYSTEMS



Established in 1968, Muir has become a dominant force in anchoring and mooring technology, recognised today as the anchoring system of choice for a large variety and size of luxury motor and sail yachts.

Muir design and manufacture one of the largest ranges of anchoring and mooring systems for vessels up to 150 metres.

Muir have designed and produced anchoring and mooring equipment setting Industry Standards and benchmarks over many years. Continued investment in research and development, design and innovation, keeps Muir at the forefront of the yachting industry. The development of high power to weight ratio equipment with the combination of highly efficient planetary drive gears, medium to high pressure hydraulics, in addition to one, two or variable speed AC electric drives, will achieve the ideal anchoring system to suit your vessel.

Muir surpass or meet the world's most stringent classification requirements including: ABS, LRS, DNV, BV, NKK, GL, CCS, RINA, RRR, RMSR and compliance with MCA and USL codes.

Muir running gear is available in polished 316L stainless steel, manganese bronze, chromed bronze and aluminium bronze.

316L polished stainless steel anchor windlasses and mooring capstans of all sizes are being manufactured in larger volumes today resulting in increased affordability.

A Muir anchoring system provides long term reliability, durability and dependability.

Our success in the luxury yacht and commercial markets has come from the long standing commitment to work closely with naval architects, designers, builders, captains, engineers and owners in the pursuit of excellence in anchoring and mooring systems.

A Muir anchoring system enhances the foredeck of the most elegant sail, motor, expedition and commercial vessels. Highly polished finishes and well proportioned components are synonymous with the Muir brand.

With an extensive and continually expanding distributor and service network established in over 60 countries including North and South America, Europe, Asia/Pacific, Middle East, Scandinavia and Australasia, Muir can provide the global support and confidence that is demanded by the cruising, charter and commercial operators.

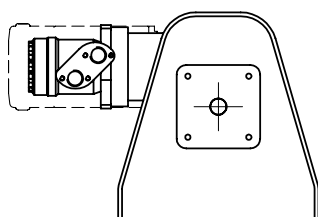
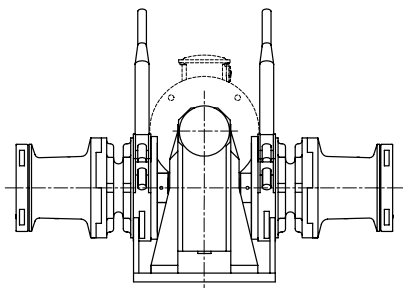
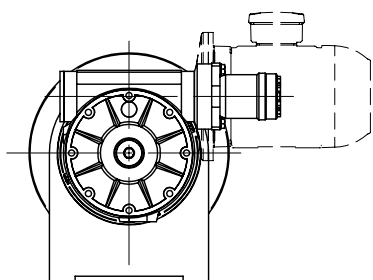
In addition to commercial deck machinery, Muir manufacture a range of anchoring and mooring equipment in all configurations, including drum winches for work boats, fast ferries, naval and defence vessels up to 150 metres and up to 15,000kg pull.

With unrelenting dedication to total quality in design and manufacture, plus a desire to provide perfection for our clients, Muir is the preferred choice for your anchoring and mooring system solutions.



CONTENTS

COMMERCIAL DECK MACHINERY



Technical Information	4
-----------------------	---

Certified and Accredited Quality	5
----------------------------------	---

Drum Winches, Windlasses and Fishing Winches 6

SD100	8
-------	---

SD150	10
-------	----

SD250	12
-------	----

SD350	14
-------	----

SD450	16
-------	----

Horizontal 'SGC' Windlasses 18

SGC1	18
------	----

SGC2	20
------	----

SGC3	22
------	----

SGC4	24
------	----

Ramp & General Purpose Winches 26

RW3300/63	26
-----------	----

RW6600/86	27
-----------	----

Capstans and Windlasses 28

Docking Capstans	28
------------------	----

Vertical Windlasses	29
---------------------	----

Horizontal Windlasses	30
-----------------------	----

Gunwhale Hauler Capstan	31
-------------------------	----

Chain Stoppers, Compressors and Devil's Claws 32

Chain Stoppers	32
----------------	----

Chain Stopper Devil's Claws	32
-----------------------------	----

Chain Compressors	33
-------------------	----

Alloy Hatches	34
---------------	----

Anchoring System Accessories	36
------------------------------	----

Technical Information

Muir offers a comprehensive range of commercial equipment for patrol boats, work boats, fishing vessels and high speed ferries.

With an extensive history in marine engineering, Muir's Commercial equipment incorporates the vast knowledge and experience acquired over the past 45 years. Muir's range of commercial equipment is designed and manufactured to meet the most testing conditions. Function and reliability are foremost with the manufacture of Muir's Commercial range.

Muir's reputation for quality products extends across a full range of Commercial vessels Worldwide.

Equipment constructed in steel or light weight alloy for the high speed ferry operations reduce build weights by up to 35%. Muir can supply gear for vessels up to 150 metres in length.

A comprehensive range of production electric/hydraulic winches, windlasses and commercial equipment is available. Muir cater for custom designed equipment to suit your requirements.

Muir is accredited by DNV, to ISO 9001 Quality Assurance System. Equipment is tested to most classification societies.

TECHNICAL INFORMATION

The company has adopted the corporate policy of manufacturing and selling products which have the recognised standard of quality that satisfies customers throughout the effective life span of the product.

It is therefore an essential requirement of this stipulated policy for Muir to produce and supply its customers with products which are suitable for their intended purpose, and which are in conformity with the relevant and agreed specification or contract

The procedures outlined in our quality assurance manual describe how the quality system is designed to ensure that customer requirements are recognised and that consistent control of these requirements is established, implemented and maintained.

Strict adherence to the policy stated above is a requirement of every aspect of Muir.

In compliance with our quality policy, the following pages containing specification and drawings are all available in paper copy. AutoCAD drawings are available in disk form or via the internet in a range of file types.

Standard builds for commercial equipment are steel or cast steel grit blasted clean, zinc primed and coated with white epoxy enamel unless otherwise specified.

Winch components may also be supplied in polished bronze, chrome bronze, stainless steel, alloy, cast steel or cast iron as specified by Muir or customer in writing or at time of purchasing to suit the designers and owners requirements.

Motor drives and gearboxes are finished in white gloss with non-corrosive weight saving marine alloy components use where practicable.

Heavy-duty brake design on some models may not require use of chain stoppers or chain compressors depending on classification society rules.

Devils Claws, Chain Rollers, Chain Stoppers and Chain Compressors are available for all sizes of anchor chain.

Drum winch weights are nett for steel build direct drive models. Dog clutch models refer Muir factory for weight details.

On placing an order we prefer a chain sample, including joining links and kenter shackles (if they are to be accommodated). Due to widening of gypsy pattern casting.

We supply a range of AC/DC electrical or hydraulic controls and accessories for the following winches and equipment.

DEFINITIONS: FOR APPLICATIONS IN THIS CATALOGUE

Windlass – A vertical or horizontal mechanical apparatus (hand, electric or hydraulic) for pulling or hoisting anchor and cable (chain or synthetic rope), incorporating a circular chain wheel or gypsy with four or five pockets into which anchor chain links fit snugly. Synthetic three strand nylon lines can be pulled in the chain wheel if the design incorporates a grooved vee section with an appropriate stripper and tensioner to drive the rope.

WINCH – A vertical or horizontal apparatus used for hoisting or pulling purposes incorporating a storage drum around which is wrapped wire cable or rope, mechanically activated by hand, electrical or hydraulic power.

Certified and Accredited Quality

GLOSSARY OF TERMS

- Rating** – Is the maximum pull, load, that can be applied to the winch/windlass for short periods.
- Working Load** – As stated or recommended by the relevant classification society. Otherwise this is the maximum continuous load of the windlass.
- Gypsy** – Chain wheel, Wild Cat.
- Model Numbers** – Product numbers are not indicative of the lift capacity, rating or working load.

OPTIONS: CONTROLS, STARTERS AND ACCESSORIES

- The design of the preferred starting system must be considered.
- Control cabinets and starters for single speed, dual speed and variable speed AC motor can be supplied to customer requirements.
- It should be noted the vessel's generating capacity needs to be capable of starting the deck machinery on high load.
- Foot operated, remote and hand held controls are available for hydraulic and electric windlasses and capstans.
- For more detail refer to Master Control and Accessories Section on page 36. Hydraulic and electrical circuitry if required, will be at customers cost.

MOTOR PROTECTION

- All electric motors must be protected from overload by appropriate circuit breakers (or fuses).
- Thermistors are available for protection of overheating of AC motors and should be connected to circuit trip relays to also provide overload protection. Heaters can also be fitted to avoid condensation.
- Hydraulic motors must be protected by relief valves. Counter balance valves must be fitted to hydraulic gear drives to prevent run back.

CHAIN GYPSIES

- Are available to suit ISO, DIN 766, Studlink and Shortlink calibrated chains.

CUSTOM DESIGNED WINDLASSES

- Custom designed windlasses for specialised installations can be supplied on request.

CLASSIFICATION PERFORMANCE AND TYPE APPROVAL

- Classification requires a minimum lifting speed of 9 metres/minute and Muir designs have optional two speed systems in hydraulic or AC drives up to 18M/M.
- Muir is able to build to specific classification society requirements including ABS, Lloyds, DNV, NKK, GL, RRR, RMSR, BV, KR, CCS, and compliance with MCA and USL codes.

Muir products are sold and serviced through distributors, agents and yards worldwide.



RATING CAPACITY
Rating capacity is based on maximum shortlink chain size and standard

Electric and hydraulic motors. Other chain sizes and optional motors will effect the capacity and speed.

ABBREVIATIONS

DC	Direct Current
AC	Alternating Current
HYD	Hydraulic
gal	Gallons (US)
lt	Litres
MPa	Megapascal
PSI	Pounds per square inch
lb	Pound
kg	Kilogram
Min	Minute
M	Metre
mm	Millimetre
"	Inch
' / ft	Feet

© All products in this catalogue and on disk are copyright to Muir Engineering 2013. All rights reserved. No images or information may be reproduced without the prior permission of the copyright owner. Product designs for use by Muir Engineering only. Products herein are NOT to be manufactured or produced by any other persons.

While all due care and attention has been taken in the preparation of this catalogue no responsibility shall be taken for errors or omissions. THIS DOCUMENT SHOULD NOT BE USED FOR INSTALLATION PURPOSES
Any reference to MUIR or MUIR'S in this catalogue implies MUIR ENGINEERING GROUP PTY. LTD. MUIR reserves the right to change specifications without notice.



MUIR SINCE 1968

Anchoring and Fishing Drum Winches

General Description

The lightweight and versatile SD Series have been developed for multiple purpose work boats uses including fast ferries, charter, defence, offshore and on shore applications. Winches can be supplied as a complete package including electrical cabinets controls and power units. Class Certification is available for all models. Capstans are optional.

FOR ANCHORING, MOORING, FISHING AND LIFTING PURPOSES.

Drum Winches are popular today in anchor winching operations having the benefit of storing the steel cable or nylon line on the drum and the anchor chain over the top. This style of installation does not require a chain locker below the deck which is often not designed into high speed or shallow draft vessels. Drive power is available in Hydraulic or Electric AC 200-400 Volts, 3PH, 50 or 60HZ and also 24V on some smaller models.

Decutching the anchor and chain to freefall can be achieved by way of a mechanical sliding Dog Clutch with external braking on the winch drum. Hydraulic Direct Drive and Piston Motor designs are able to achieve freefall hydraulically using special valving components.

The SD250 & SD350 PP (Power Pack) Lightweight model Drum Winch are available incorporating the AC / Hydraulic power pack on the base plate and for ease of installation and only requires electric power to the motor and is ready to operate.

Single and Twin Drum Fishing Winches and Net Reels for Tuna, Trawling and Oceanographic purposes are available in various sizes.

A range of general purpose Drum Winches from 100kg to 10,000kg can be supplied for many general winching purposes.

In the designing installation and servicing of winching products, the safety, reliability and long term quality are of the upmost importance.

DOG CLUTCH DRIVES

Electric: Winches and Windlasses built to classification Society rules with heavy duty dog clutches between the drive, drum or chain gypsy ensures there is no slippage in case of stall or seizure of the anchor, or when the anchor comes home. It is necessary to install a torque limiter on AC models to allow slippage between the AC motor and geardrive protecting the equipment.

HYDRAULIC DRIVES

Anchoring equipment manufactured to classification society rules and with Hydraulic drive systems are fitted with pressure relief valves, and in the event of excessive load or anchor stall bypasses the pressure back to the Hydraulic reservoir. Counter balance valves are required to prevent run back, at additional cost to the winch/windlass.

CONE CLUTCH DRIVES

Cone Clutch Drives by design allow slippage at excessive loads and do not require torque limiter installation. The load at which slippage takes place can be determined by the amount of pressure applied to the clutch. This option is available on the SD100 model.

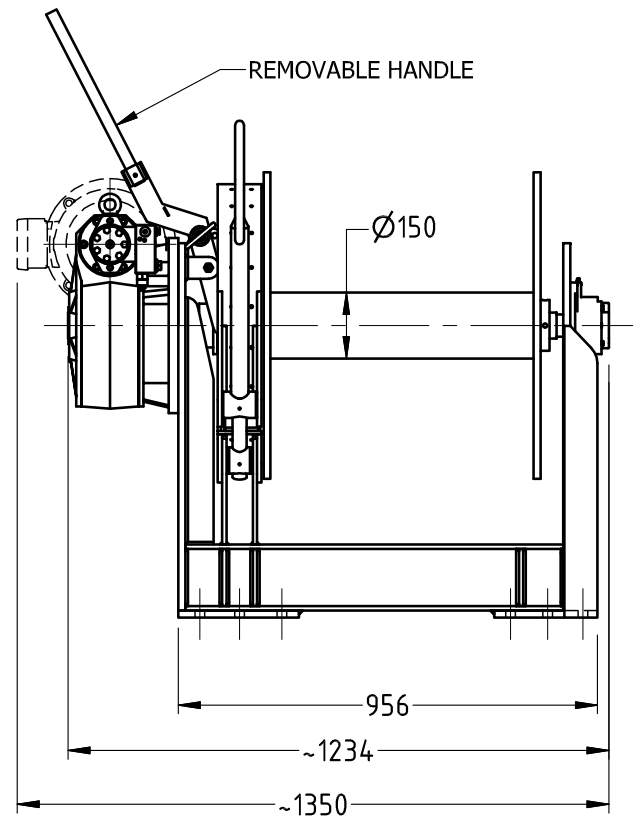
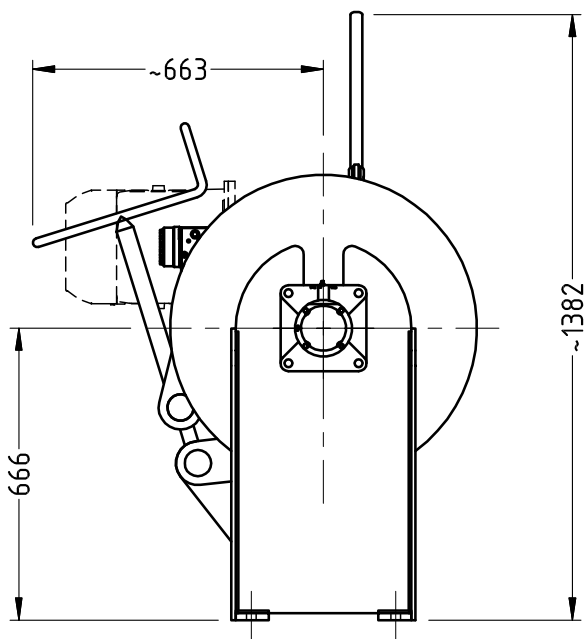
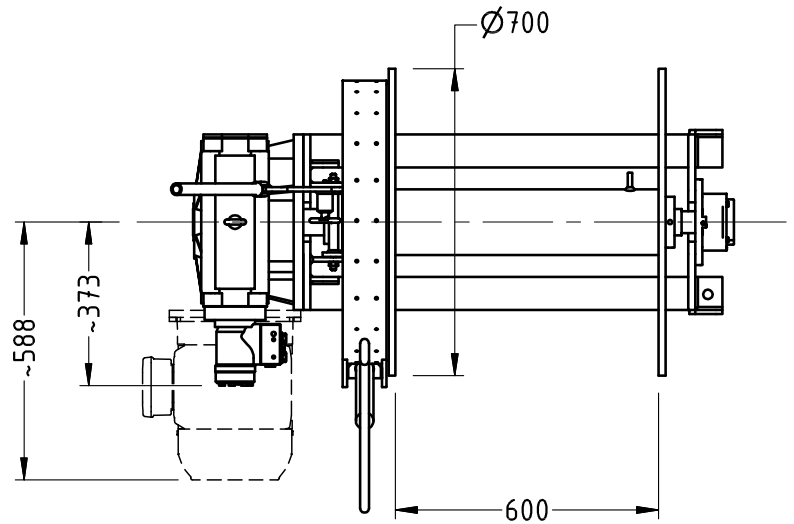
CONTACT US

If you have a winching need for either onboard or onshore please contact Muir for your nearest distributor. Two additional catalogues are also available for Pleasure craft and Mega Yacht equipment.



Custom Designed 3 Tonne Winches SD3

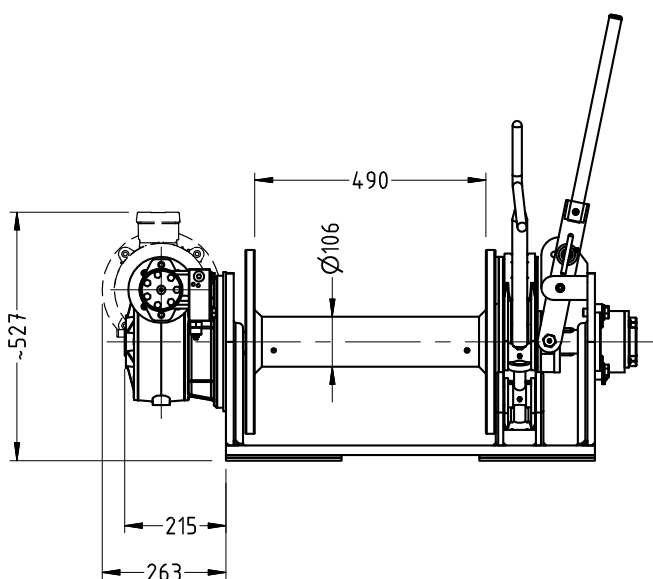
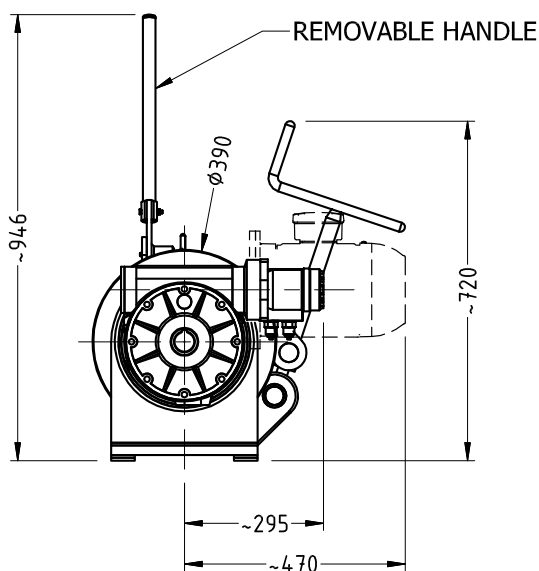
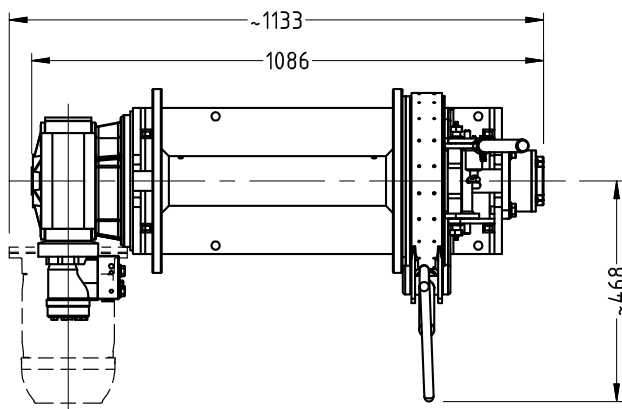
**General Assembly
(AC/HYD Motor)**





SD100

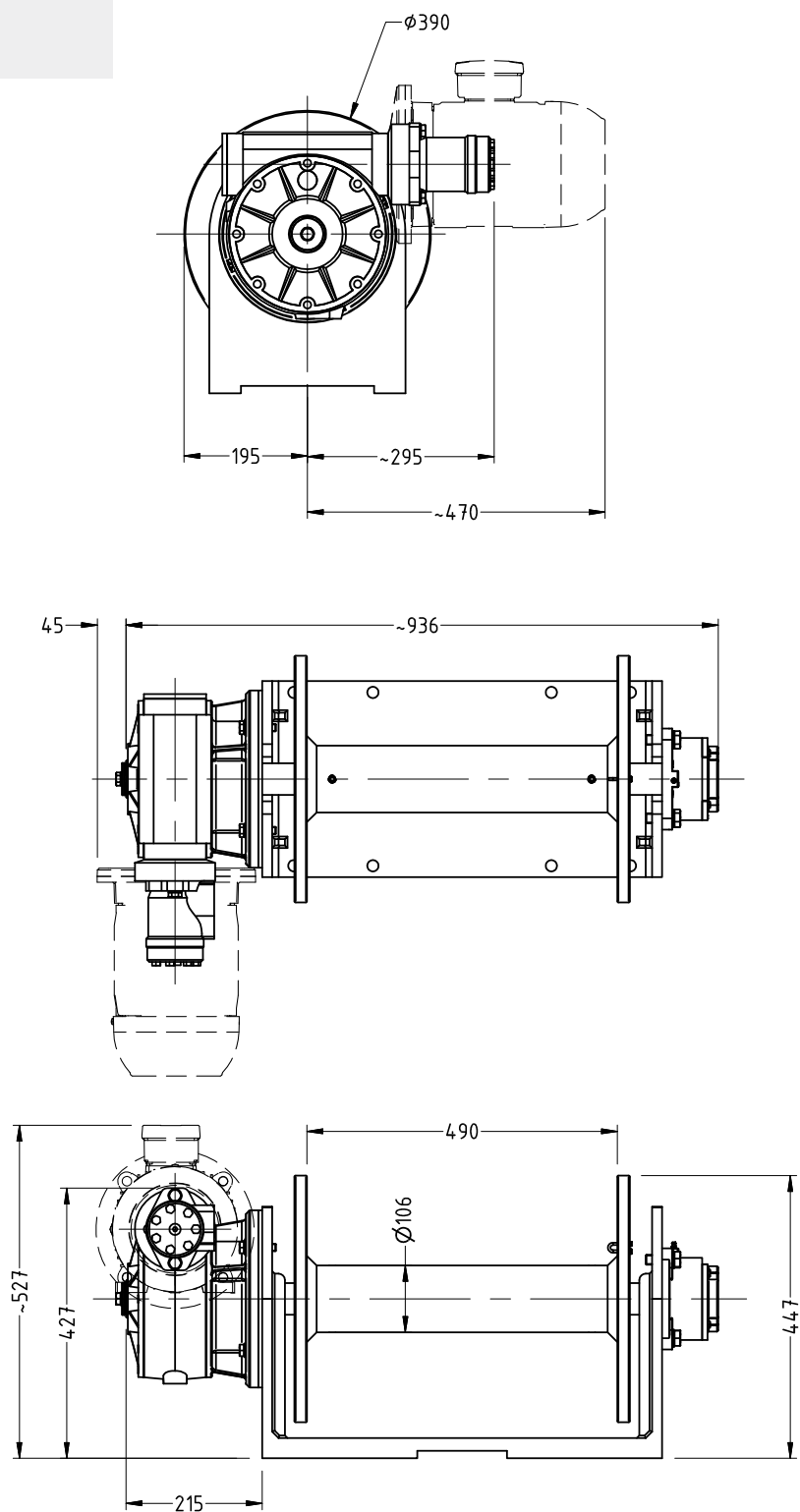
Brake & Clutch General Assembly (AC/HYD Motor)



PERFORMANCE CRITERIA

MODEL	SD100AC	SD100HYD
Power Supply	24V, 208/415V, 50/60Hz, 3PH	HYDRAULIC
Input Power (KW)	3 / 4 KW	-
Hydraulic Flow (l/min)	-	24 litres/min
Pressure (bar)	-	140 Bar
Lifting Force	6 - 7kN	7 - 8kN
Mean Recovery Speed	9M/min (minimum)	9M/min (minimum)
Brake Holding Power	110kN	110kN
Class Certification	Optional	Optional
Drum Capacity	120M of 12-14mm cable 10M of 16mm chain	120M of 12-14mm cable 10M of 16mm chain
Docking Capstan	Optional	Optional
Construction	Steel/Alloy	Steel/Alloy
Weight (approx.)	Steel 320kg/Alloy 135kg	Steel 320kg/Alloy 100kg
Finish	Aluminium Enamel over zinc primer	Aluminium Enamel over zinc primer

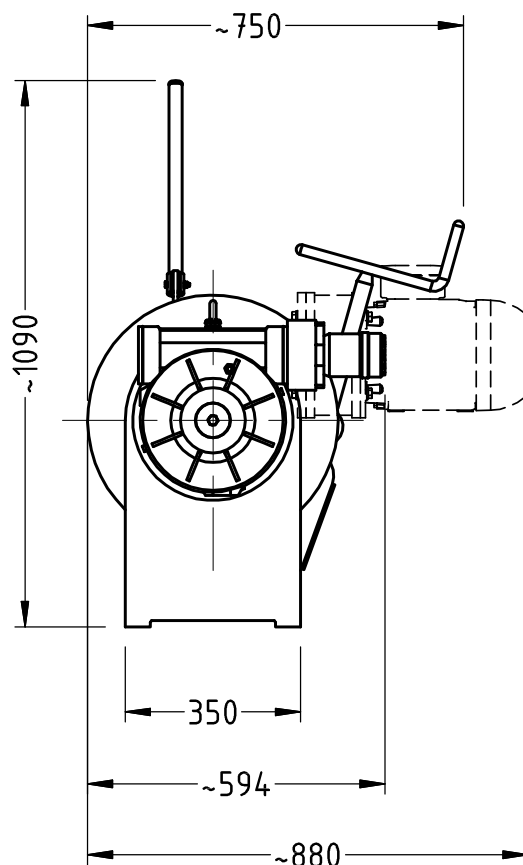
General Assembly (AC/HYD Motor)





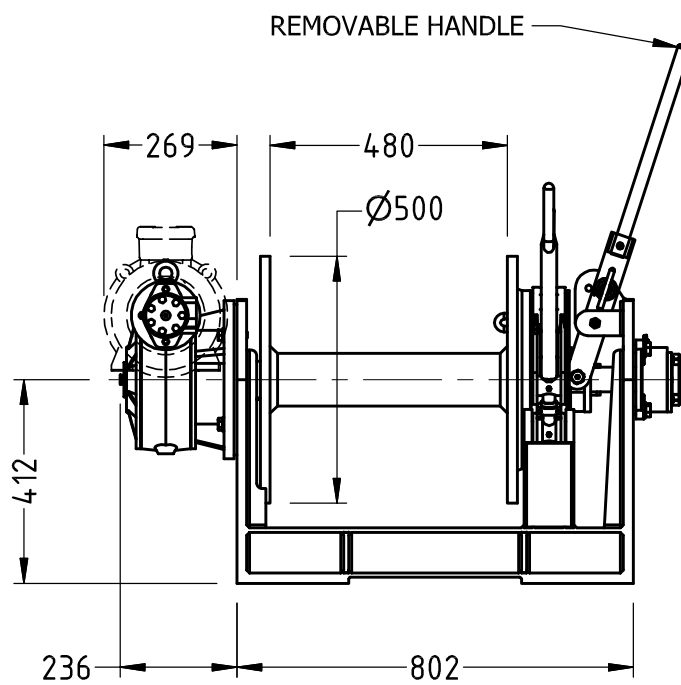
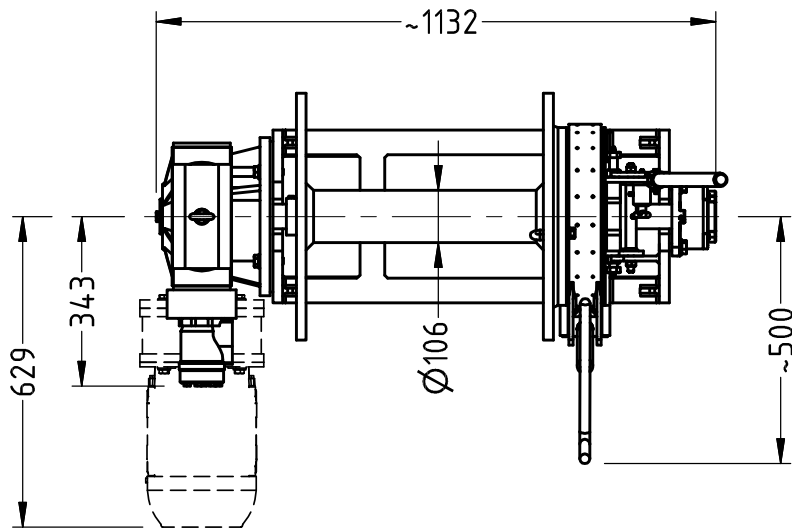
SD150

General Assembly (AC/HYD Motor)



PERFORMANCE CRITERIA

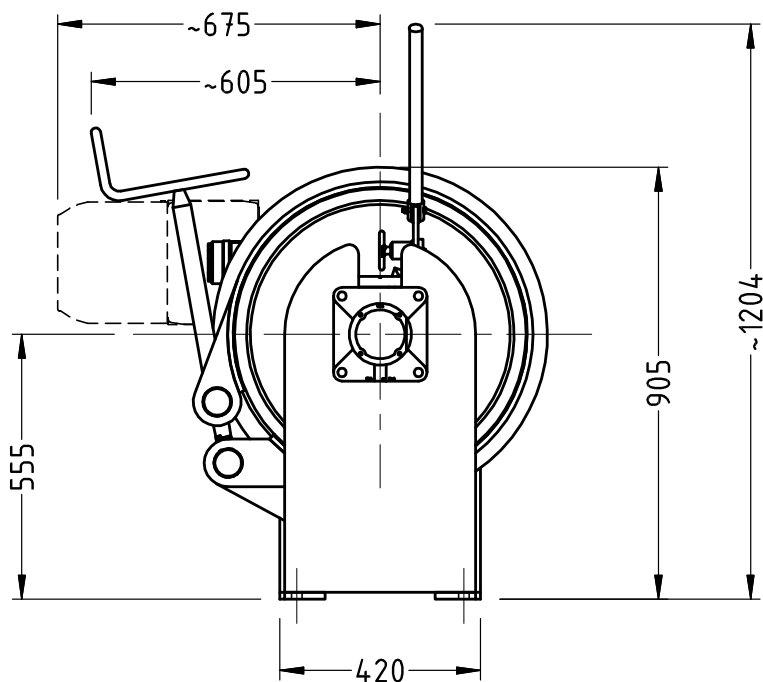
MODEL	SD150AC	SD150HYD
Power Supply	208/415V 50/60Hz 3PH	HYDRAULIC
Input Power (KW)	3 / 4 KW	-
Hydraulic Flow (l/min)	-	27 litres/min
Pressure (bar)	-	100 Bar
Lifting Force	10 - 11kN	15 - 16kN
Mean Recovery Speed	9M/min (minimum)	9M/min (minimum)
Brake Holding Power	110kN	110kN
Class Certification	Optional	Optional
Drum Capacity	150M of 12-14mm cable 10M of 16mm chain	150M of 12-14mm cable 10M of 16mm chain
Docking Capstan	Optional	Optional
Construction	Steel/Alloy	Steel/Alloy
Weight (approx.)	Steel 320kg/Alloy 230kg	Steel 270kg/Alloy 190kg
Finish	Steel, grit blast epoxy Alloy, enamel over zinc primer	Steel, grit blast epoxy Alloy, enamel over zinc primer





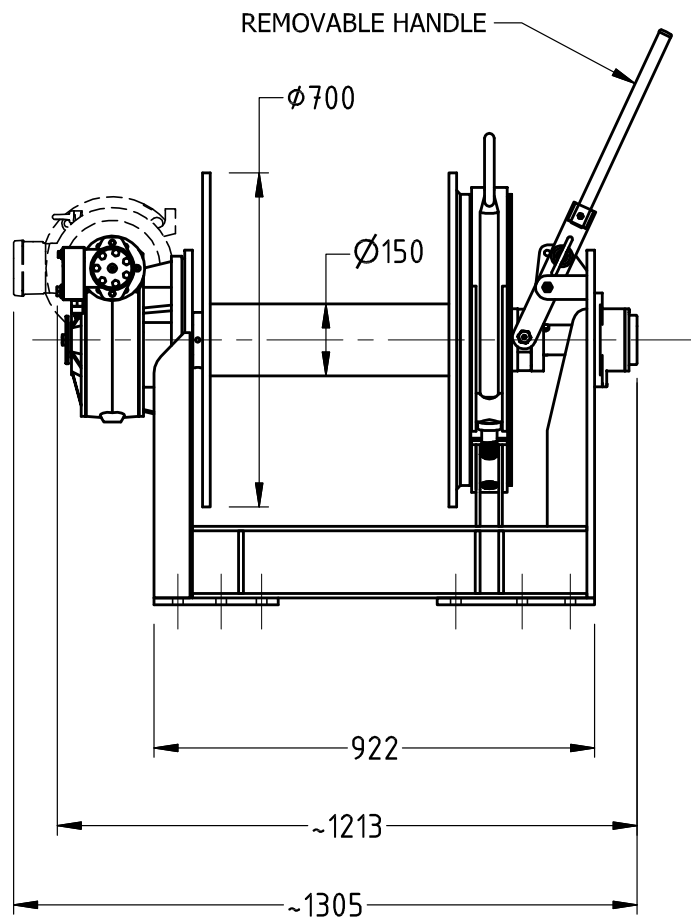
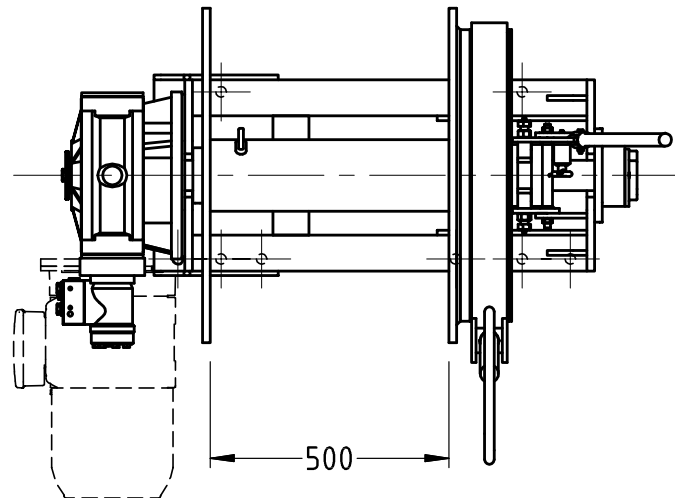
SD250

General Assembly (AC/HYD Motor)



PERFORMANCE CRITERIA

MODEL	SD250AC	SD250HYD
Power Supply	208/415V 50/60Hz 3PH	HYDRAULIC
Input Power (KW)	4 / 5.5 KW	-
Hydraulic Flow (l/min)	-	27 litres/min
Pressure (bar)	-	110 Bar
Lifting Force	11 - 13kN	17 - 18kN
Mean Recovery Speed	9M/min (minimum)	9M/min (minimum)
Brake Holding Power	140kN	140kN
Class Certification	Optional	Optional
Drum Capacity	160M of 16-18mm cable 10M of 17.5mm chain	160M of 16-18mm cable 10M of 17.5mm chain
Docking Capstan	Optional	Optional
Construction	Steel/Alloy	Steel/Alloy
Weight (approx.)	Steel 450kg/Alloy 420kg	Steel 450kg/Alloy 380kg
Finish	Steel, grit blast epoxy Alloy, enamel over zinc primer	Steel, grit blast epoxy Alloy, enamel over zinc primer

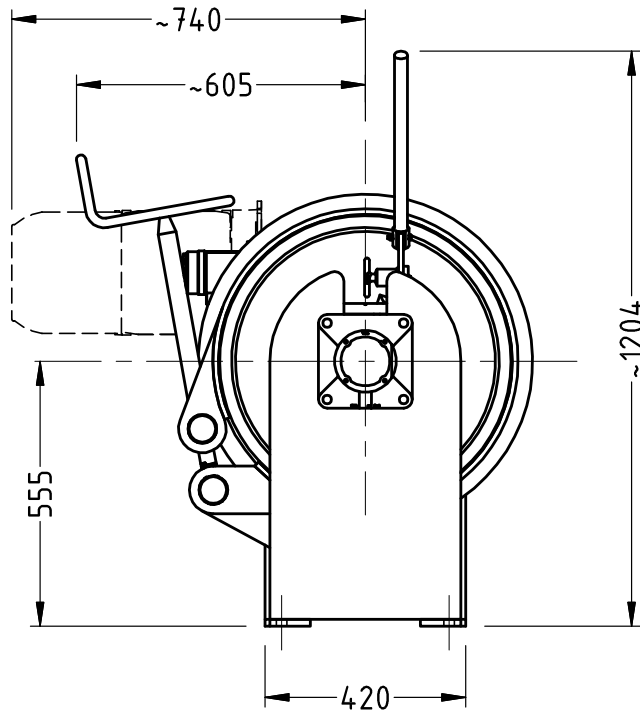




MUIR SINCE 1968

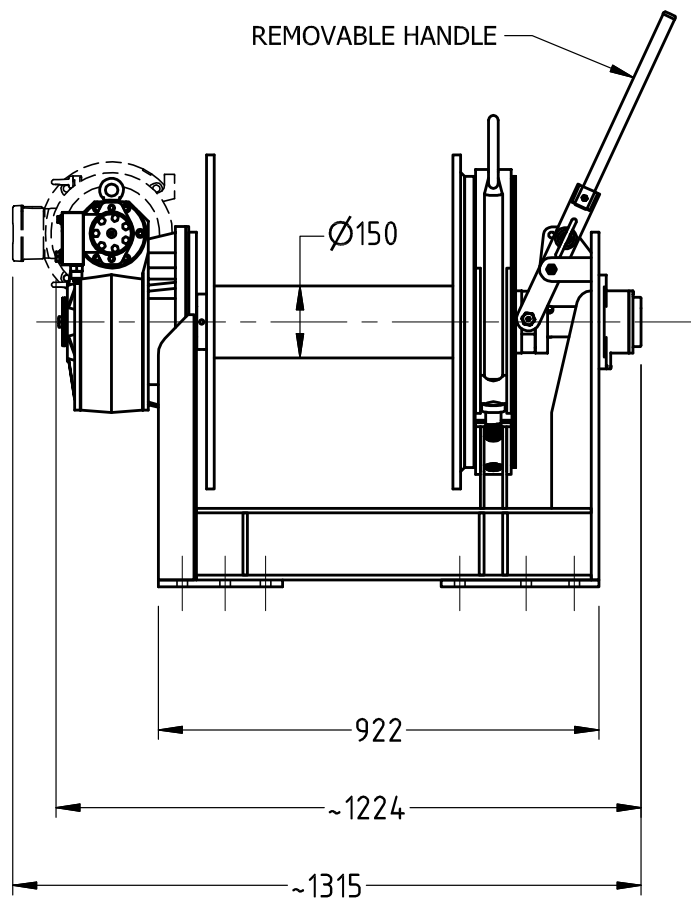
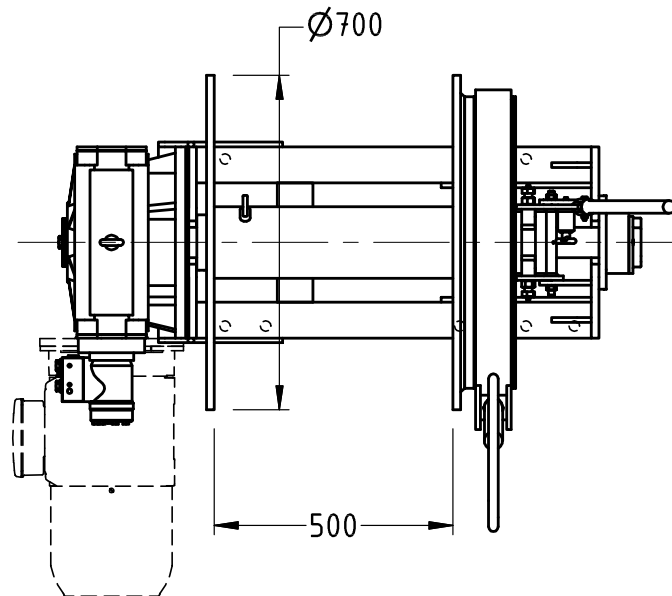
SD350

**General Assembly
(AC/HYD Motor)**



PERFORMANCE CRITERIA

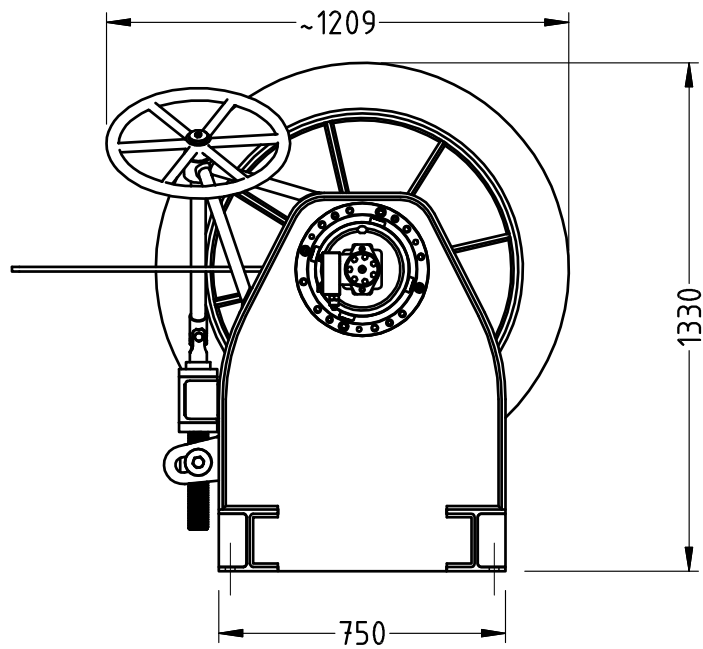
MODEL	SD350AC	SD350HYD
Power Supply	208/415V 50/60Hz 3PH	HYDRAULIC
Input Power (KW)	7.5 KW	-
Hydraulic Flow (l/min)	-	35 Litres
Pressure (bar)	-	125 Bar
Lifting Force	15 - 16kN	23 - 26kN
Mean Recovery Speed	9M/min (minimum)	9M/min (minimum)
Brake Holding Power	190kN	190kN
Class Certification	Optional	Optional
Drum Capacity	180M of 20.5mm cable 10M of 20.5mm chain	180M of 20.5mm cable 10M of 20.5mm chain
Docking Capstan	Optional	Optional
Construction	Steel/Alloy	Steel/Alloy
Weight (approx.)	Steel 610kg/Alloy 520kg	Steel 610kg/Alloy 520kg
Finish	Steel, grit blast epoxy Alloy, enamel over zinc primer	Steel, grit blast epoxy Alloy, enamel over zinc primer





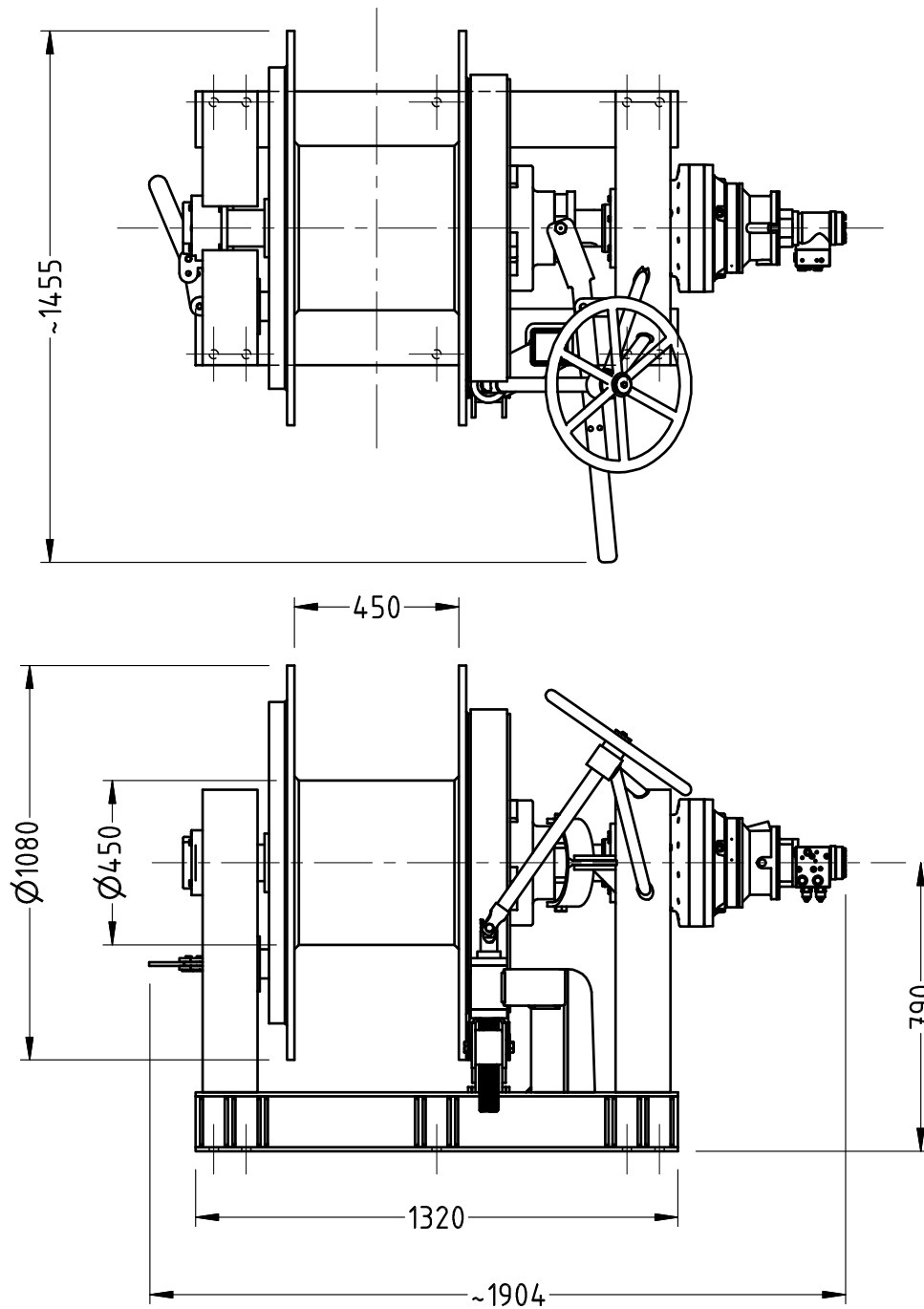
SD450

General Assembly (Hydraulic)



PERFORMANCE CRITERIA

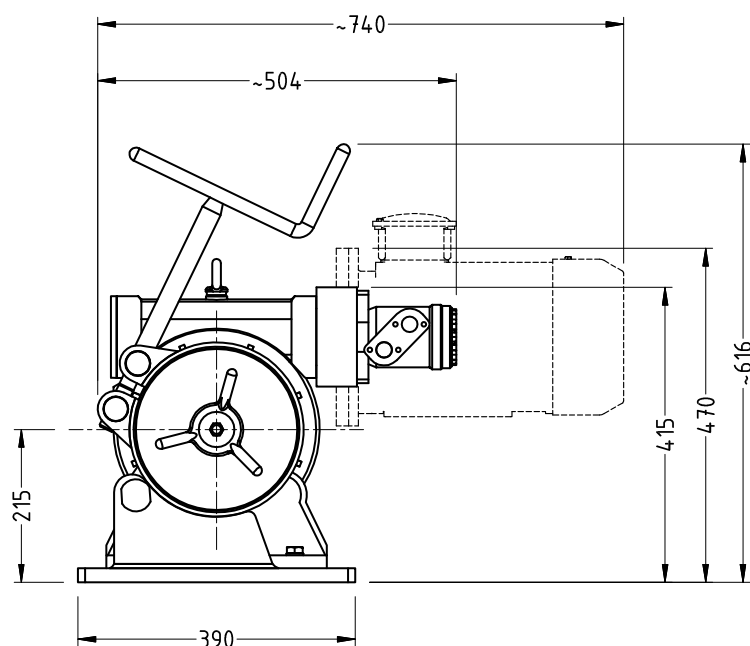
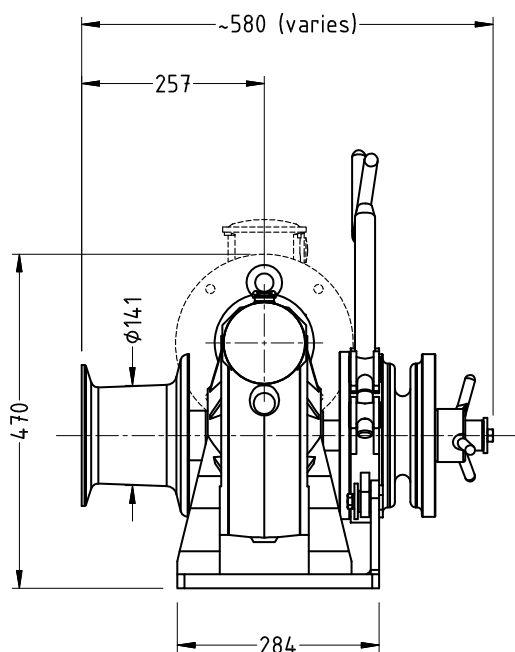
MODEL	SD450
Power Supply	HYDRAULIC
Input Power (KW)	-
Hydraulic Flow (l/min)	46 litres (30 min rating)
Pressure (bar)	85 Bar (30 min rating)
Lifting Force	27 - 30kN
Mean Recovery Speed	9M/min (minimum)
Brake Holding Power	420kN
Class Certification	Optional
Drum Capacity	200M of 30mm cable 15M of 28mm chain
Warping Capstan	Optional
Construction	Steel
Weight (approx.)	Steel 1120kg
Finish	Steel, grit blast epoxy Enamel over zinc primer





SGC1

Single Gypsy / Capstan General Arrangement (AC/HYD Motor)



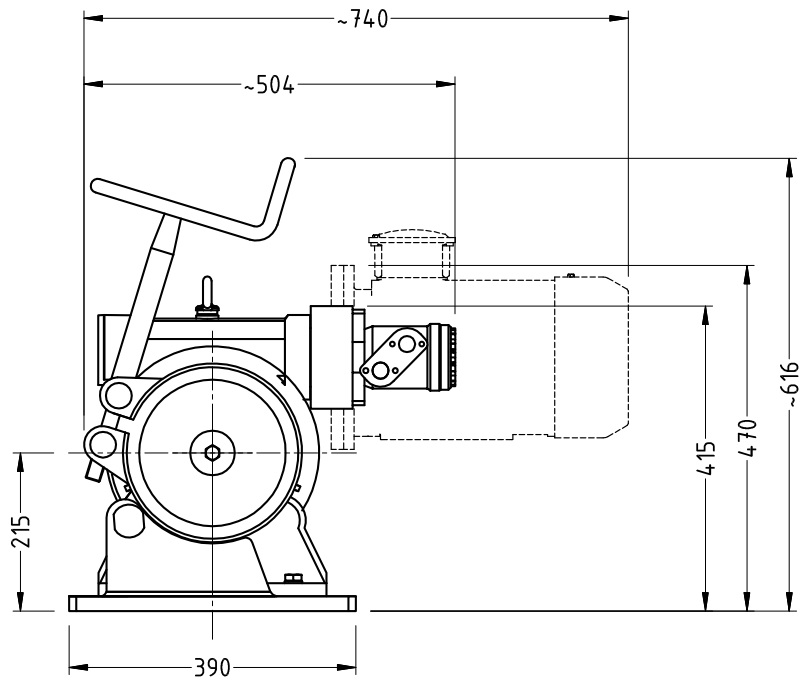
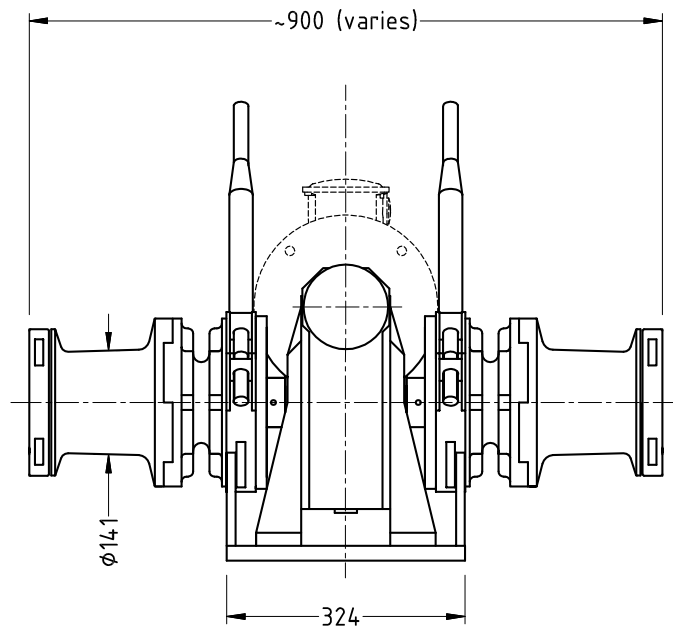
PERFORMANCE CRITERIA

MODEL	SGC1	SGC1
Power Supply	24V DC/ 3PH	HYDRAULIC
Input Power (KW)	3/4 KW	-
Hydraulic Flow (l/min)	-	30 litres/min
Pressure (bar)	-	100 Bar
Rating	~12kN 1200kg	~17kN 1700kg
Recovery Speed	10M/min (minimum)	10M/min (minimum)
Chain Size		
Short Link	16mm	16mm
Stud Link	16mm U2	16mm U2
Band Brake	316	-
Class Certification	Optional	Optional
Construction	Steel, zinc primed, or coated with epoxy enamel	Steel, zinc primed, or coated with epoxy enamel
Weight (approx.)	180kg	150kg

"SGC Series" anchor winch incorporates a totally enclosed oil lubricated worm drive gearbox direct coupled to a hydraulic or electric motor with torque limiter. SGC winches have proven performances for use on many vessels ranging from naval to passenger and commercial craft. Standard winch includes single gypsy and single capstan. Options include twin gypsy, twin capstan, manually operated band brakes, and manual handle.

Running gear in painted steel or bronze.

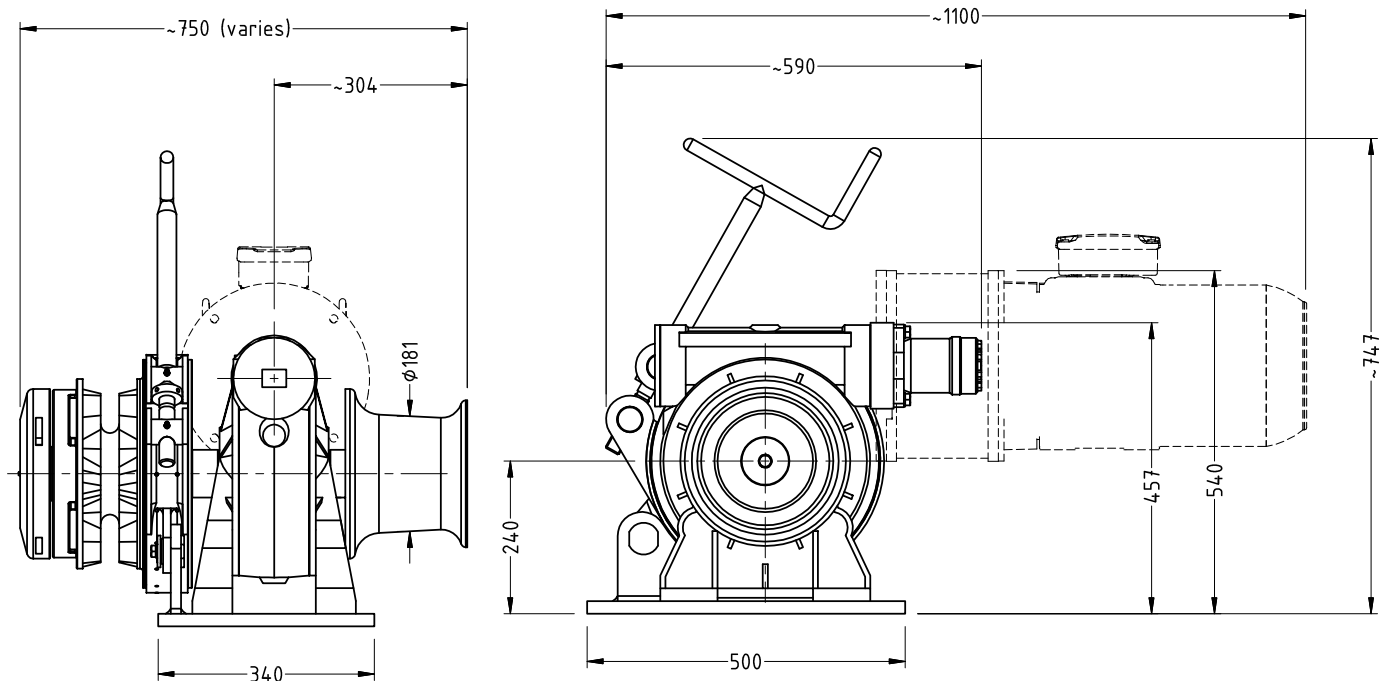
Twin Gypsy / Capstan
General Arrangement (AC/HYD Motor)





SGC2

Single Gypsy / Capstan General Arrangement (AC/HYD Motor)



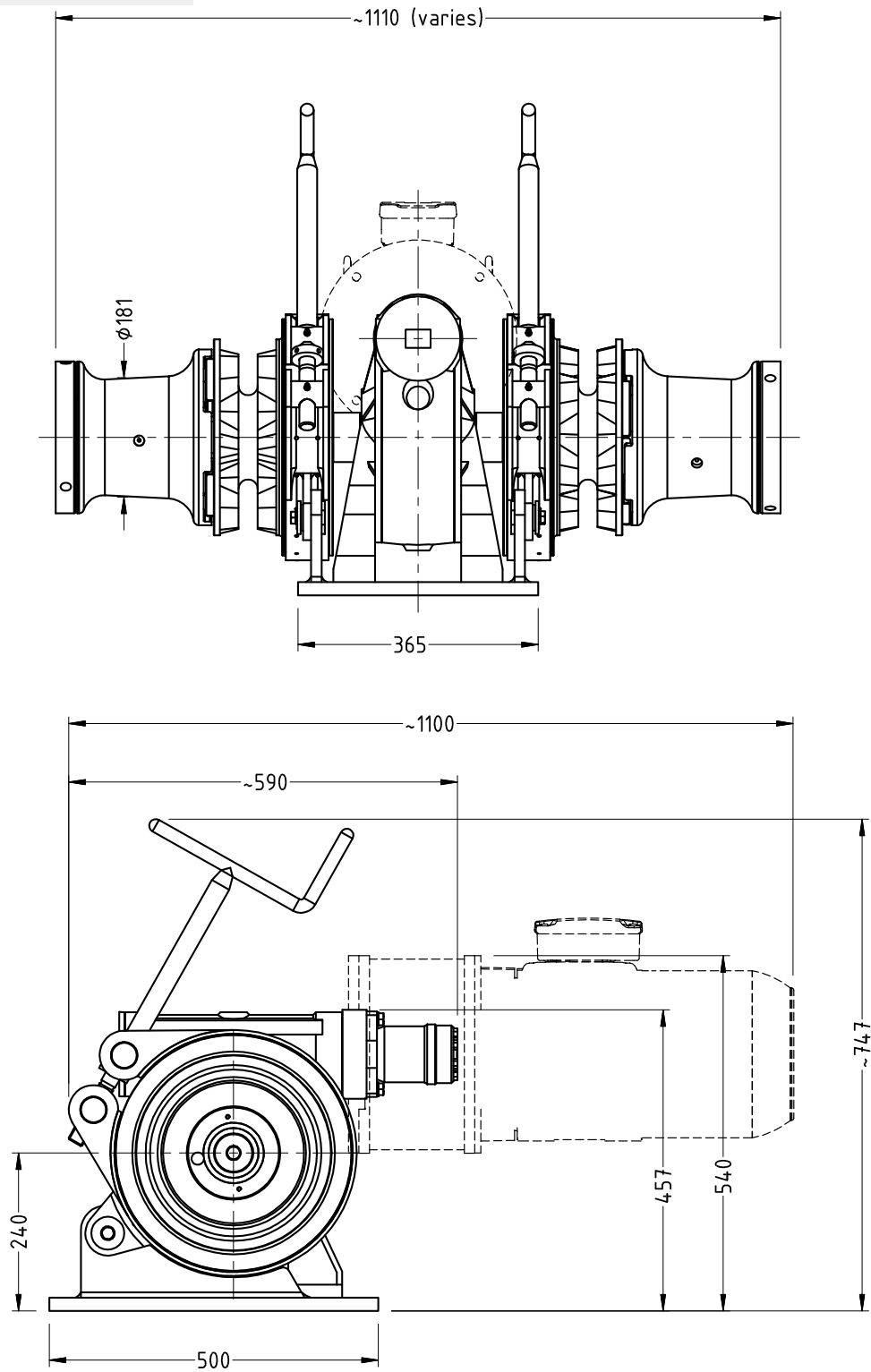
PERFORMANCE CRITERIA

MODEL	SG2	SG2
Power Supply	50HZ & 60HZ / 3PH ELEC	HYDRAULIC
Input Power (KW)	4 KW/5.5KW	-
Hydraulic Flow (l/min)	-	38 litres/min
Pressure (bar)	-	100 Bar
Rating	~14kN 1400kg 2600kg - Brake Holding	~22kN 2200kg 2600kg - Brake Holding
Recovery Speed	10M/min (minimum)	10M/min (minimum)
Chain Size		
Short Link	Up to 19mm	Up to 19mm
Stud Link	Up to 19mm U2	Up to 19mm U2
Band Brake	Mild steel or 316	-
Class Certification	Optional	Optional
Construction		
	Steel, zinc primed, or coated with epoxy enamel	Steel, zinc primed, or coated with epoxy enamel
Weight (approx.)	250kg	216kg

"SGC Series" anchor winch incorporates a totally enclosed oil lubricated worm drive gearbox direct coupled to a hydraulic or electric motor with torque limiter. SGC winches have proven performances for use on many vessels ranging from naval to passenger and commercial craft. Standard winch includes single gypsy and single capstan. Options include twin gypsy, twin capstan, manually operated band brakes, rope storage drum and manual handle.

Running gear in painted steel or bronze.

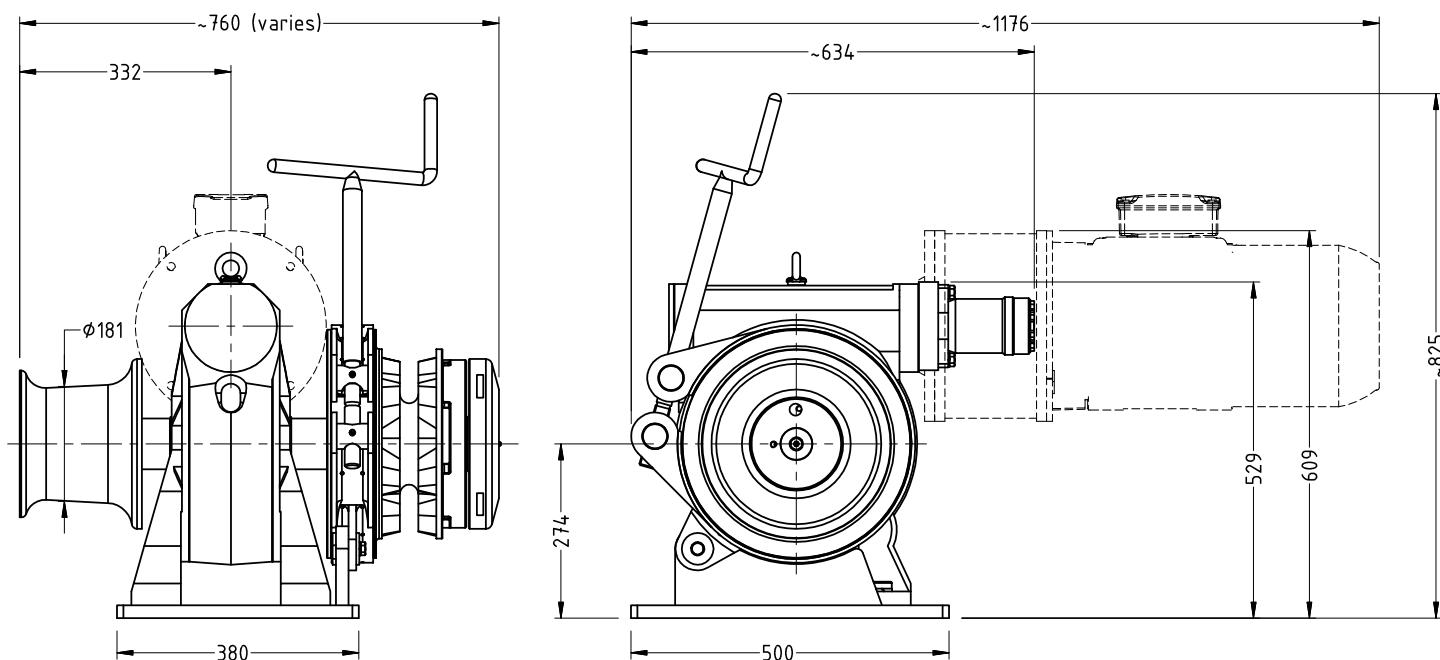
Twin Gypsy / Twin Capstan
General Arrangement (AC/HYD Motor)





SGC3

Single Gypsy / Capstan General Arrangement (AC/HYD Motor)



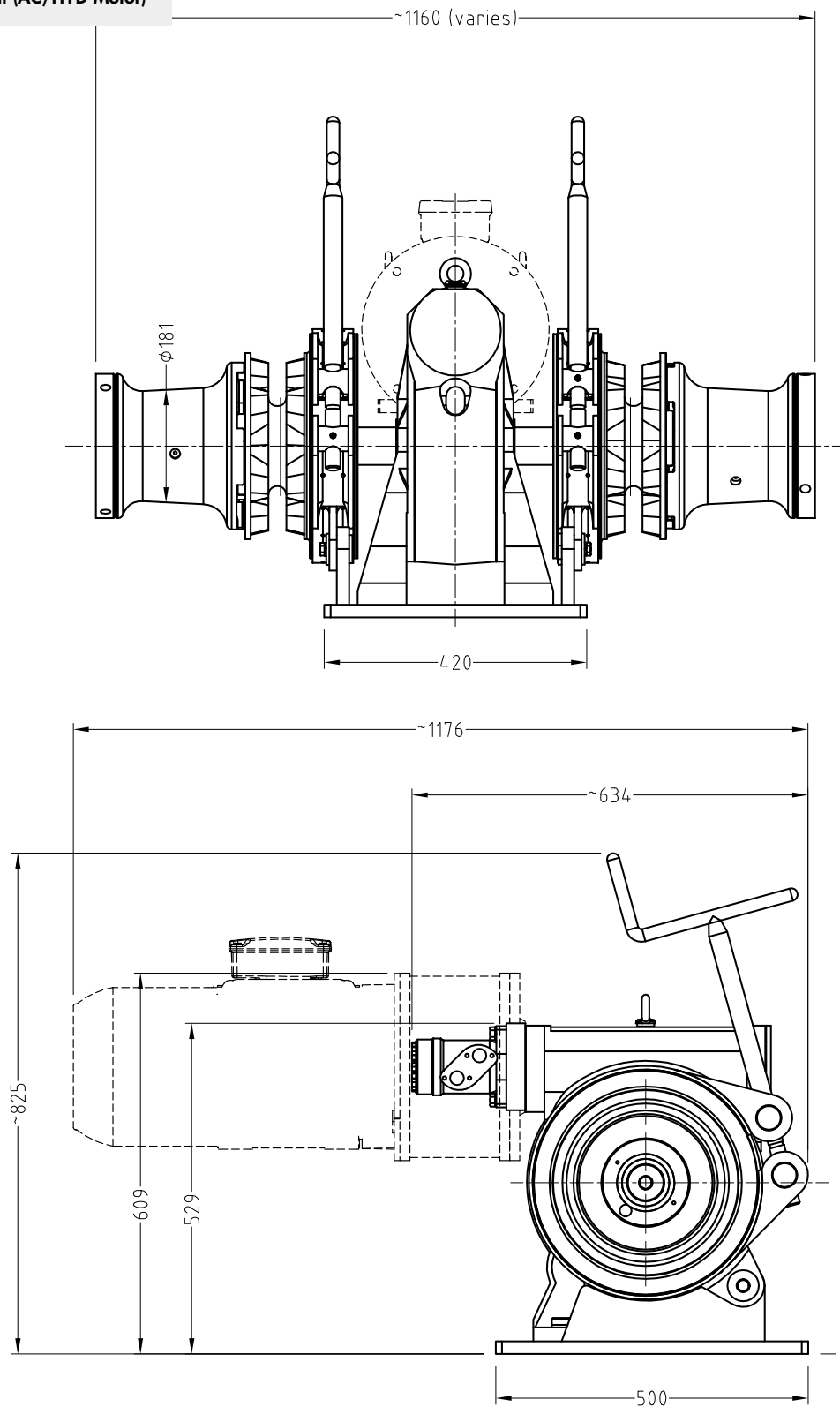
PERFORMANCE CRITERIA

MODEL	SG3	SG3
Power Supply	3PH ELEC	HYDRAULIC
Input Power (KW)	5.5 KW/7.5KW	-
Hydraulic Flow (l/min)	-	38 litres/min
Pressure (bar)	-	100 Bar
Rating	~23kN 2300kg 8200kg - Brake Holding	~27kN 2800kg 8200kg - Brake Holding
Recovery Speed	10M/min (minimum)	10M/min (minimum)
Chain Size		
Short Link	Up to 22mm	Up to 22mm
Stud Link	Up to 20.5mm U2	Up to 20.5mm
Band Brake	Mild steel or 316	-
Class Certification	Optional	Optional
Construction	Steel, zinc primed, or coated with epoxy enamel	Steel, zinc primed, or coated with epoxy enamel
Weight (approx.)	130kg	370kg

"SGC Series" anchor winch incorporates a totally enclosed oil lubricated worm drive gearbox direct coupled to a hydraulic or electric motor with torque limiter. SGC winches have proven performances for use on many vessels ranging from naval to passenger and commercial craft. Standard winch includes single gypsy and single capstan. Options include twin gypsy, twin capstan, manually operated band brakes, rope storage drum and manual handle.

Running gear in cast iron, steel or bronze.

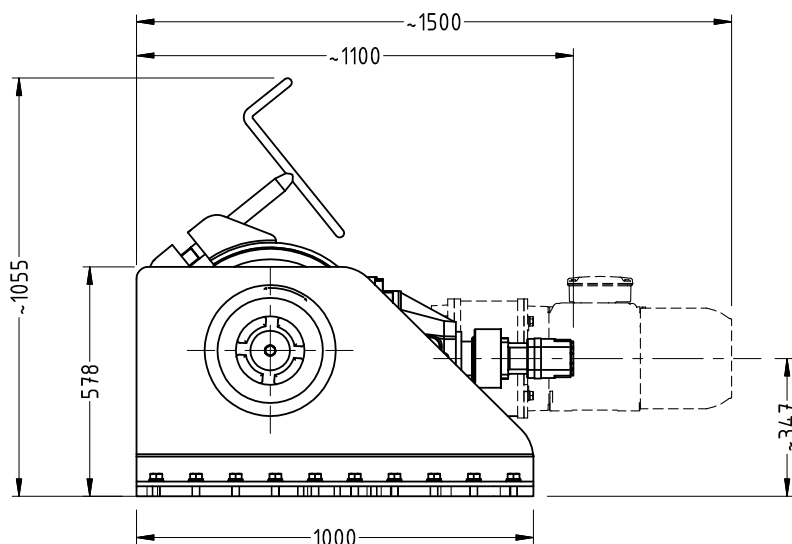
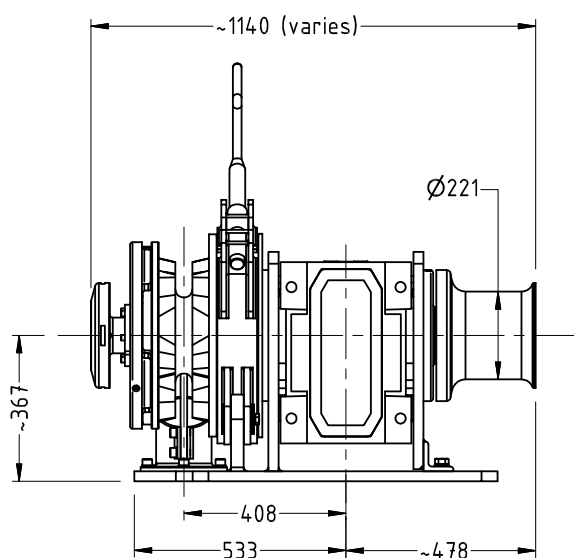
Twin Gypsy / Twin Capstan
General Arrangement (AC/HYD Motor)





SGC4

Single Gypsy / Capstan General Arrangement (AC/HYD Motor)



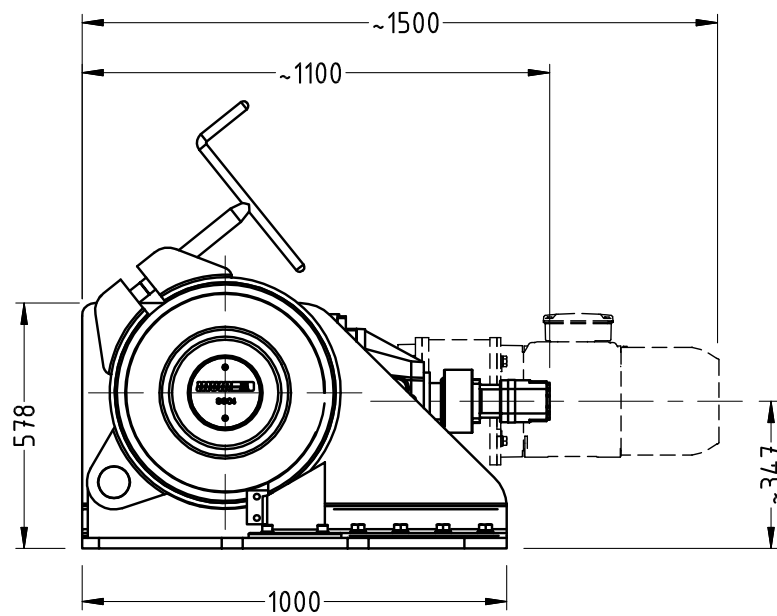
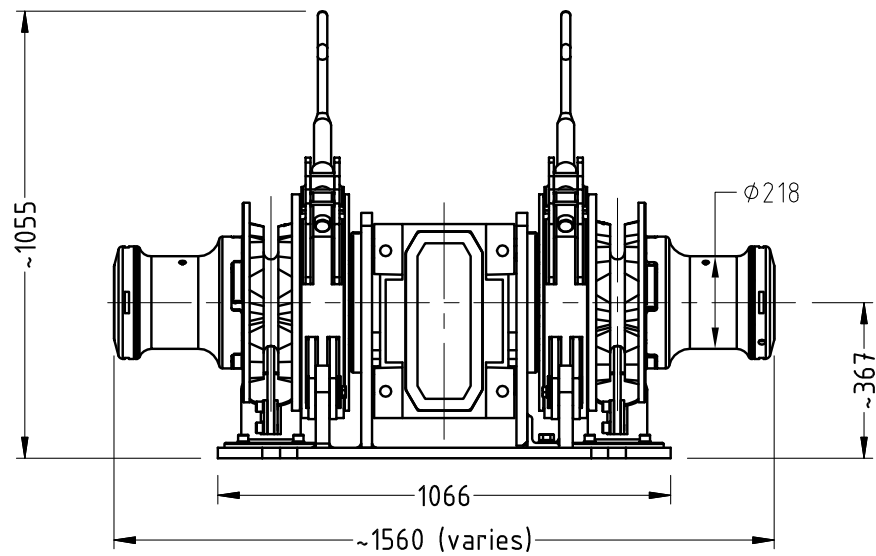
PERFORMANCE CRITERIA

MODEL	SG4	SG4
Power Supply	3PH ELEC	HYDRAULIC
Input Power (KW)	7.5 / 9.2KW	-
Hydraulic Flow (l/min)	-	40 litres/min
Pressure (bar)	-	100 Bar
Rating	~24kN 2500kg 25000kg - Brake Holding	~42kN 4300kg 25000kg - Brake Holding
Recovery Speed	10M/min (minimum)	10M/min (minimum)
Chain Size		
Short Link	22mm	22mm
Stud Link	Up to 24mm	Up to 24mm
Band Brake	316	316
Class Certification	Optional	Optional
Construction	Steel, zinc primed, or coated with epoxy enamel	Steel, zinc primed, or coated with epoxy enamel
Weight (approx.)	1400kg	1200kg

"SGC Series" anchor winch incorporates a totally enclosed oil lubricated helical gearbox direct coupled to a hydraulic or electric motor with torque limiter. SGC winches have proven performances for use on many vessels ranging from naval to passenger and commercial craft. Standard winch includes single gypsy and single capstan. Options include twin gypsy, twin capstan, manually operated band brakes, rope storage drum and manual handle.

Running gear in cast iron, steel or bronze.

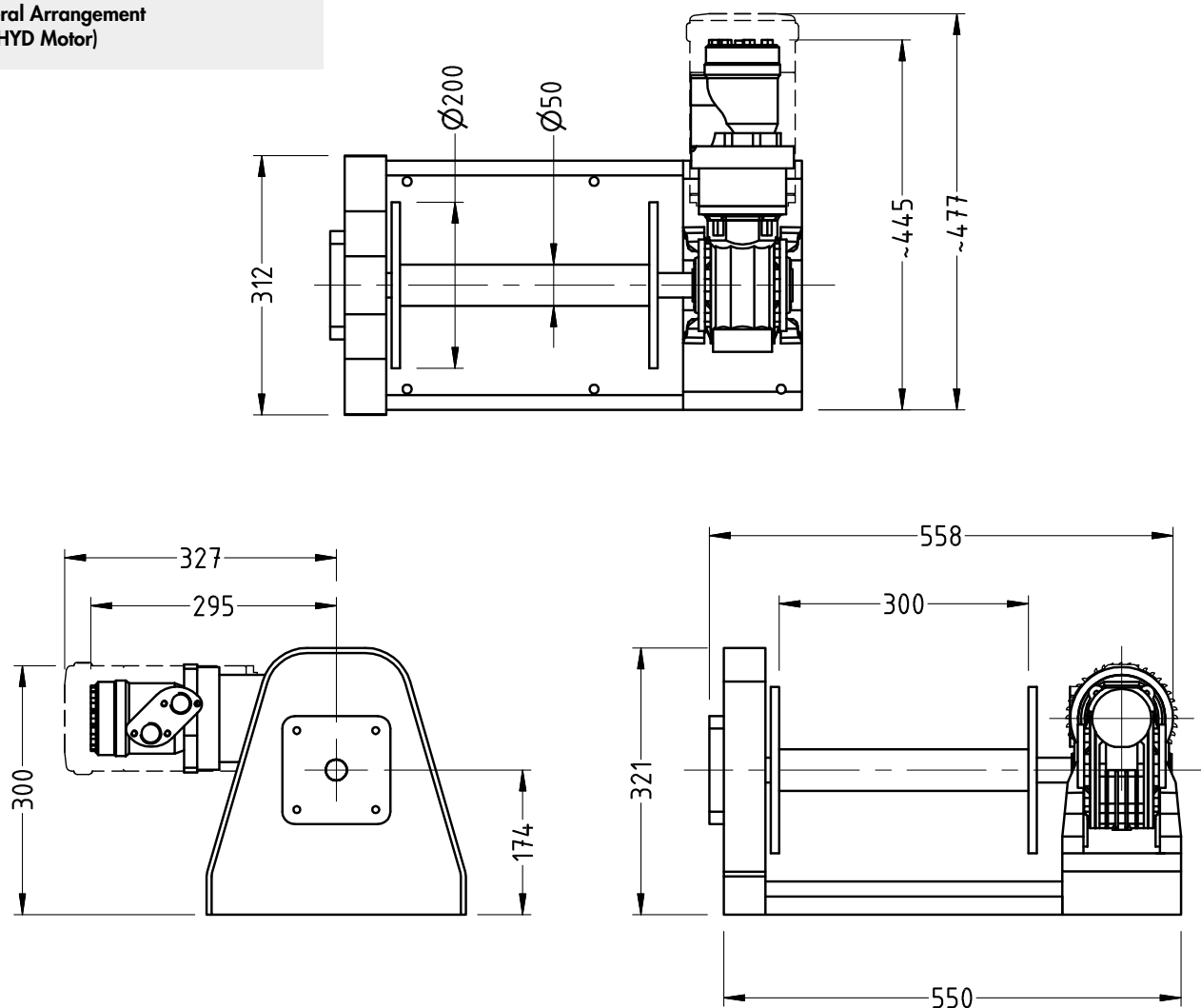
Twin Gypsy / Twin Capstan
General Arrangement (AC/HYD Motor)





RW3300/63

**General Arrangement
(DC/HYD Motor)**



PERFORMANCE CRITERIA

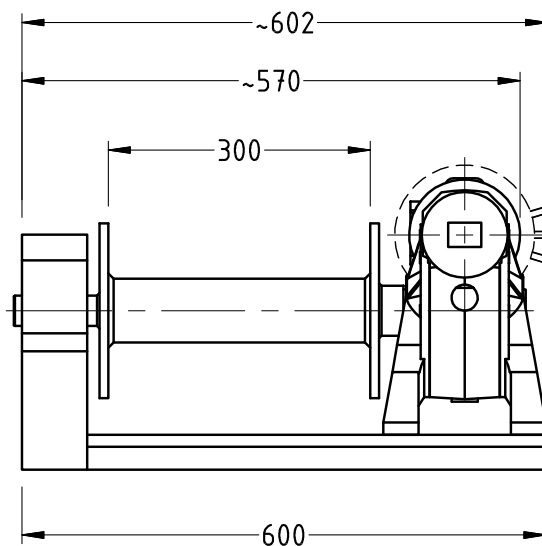
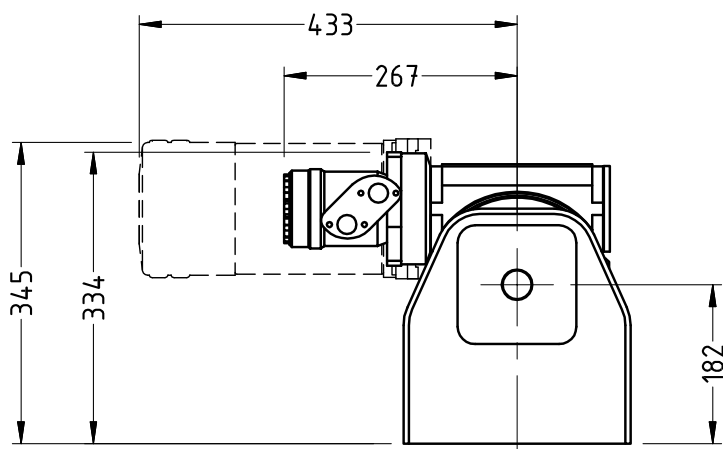
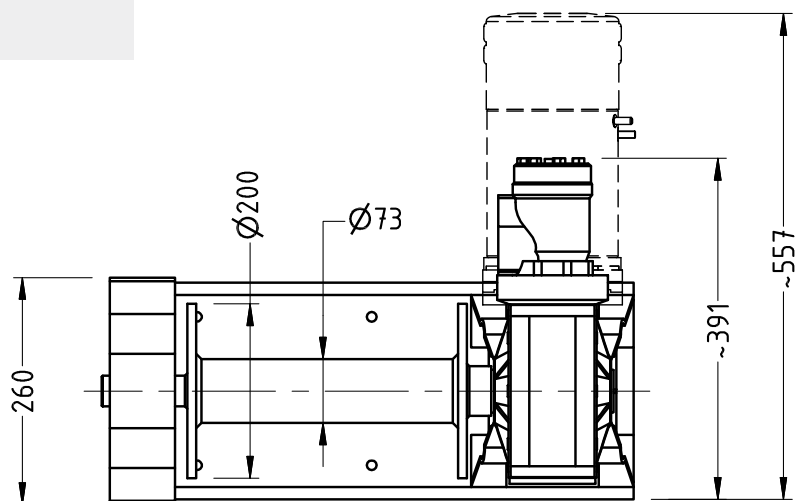
MODEL	RW3300/63
Power Supply	12/24/HYD/AC 50HZ
Rated Lift	400kg (~4kN)
Motor Size	1.0 -1.5KW
Speed	3M/min
Capacity	60M x 6mm
Construction	Steel or Stainless Steel
Finish	Gloss enamel
Hand Pendant	Optional
240/415 Switch Control	Optional
Weight (approx.)	65kg

General Purpose Winches are designed for a multiple of uses such as raising and lowering boats up to 3000 kg on ramps, slipways and beach trailers and general marine lifting and pulling purposes. Constructed from steel with a gloss enamel finish, fitted with a worm drive gearbox and water-resistant electric motor. The winches are fully reversible. Options include weatherproof electrical starting cabinet, up down switch plus a hand pendant and lead if required. AC/DC power or hydraulic.



RW6600/86

General Arrangement (DC/HYD Motor)



PERFORMANCE CRITERIA

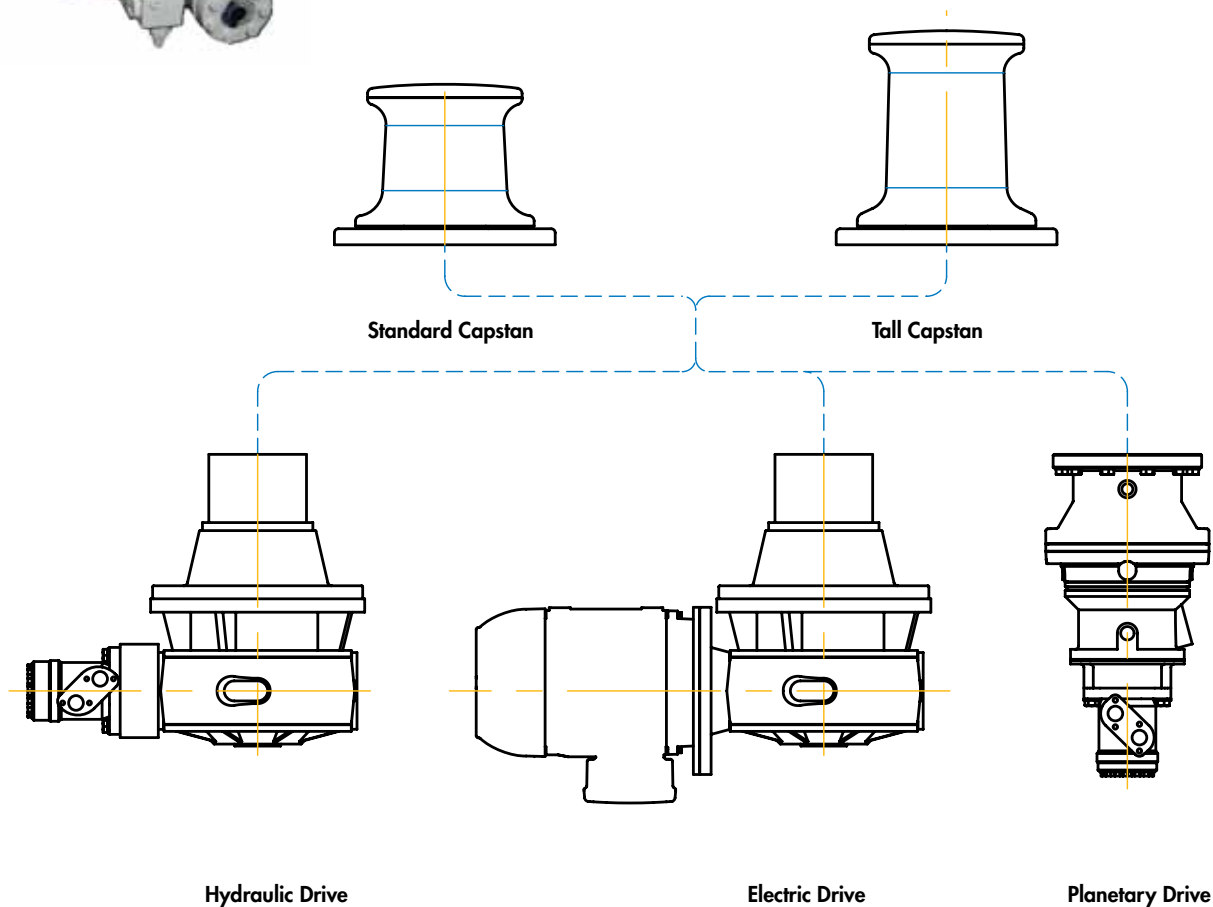
MODEL	RW6600/86
Power Supply	12/24/HYD/AC 50HZ
Rated Lift	820kg (~8kN)
Motor Size	2.0KW
Speed	3M/min
Capacity	80M x 6mm
Construction	Steel
Finish	Gloss enamel
Hand Pendant	Optional
240/415 Switch Control	Optional
Weight (approx.)	85kg

General Purpose Winches are designed for a multiple of uses such as raising and lowering boats up to 3000 kg on ramps, slipways and beach trailers and general marine lifting and pulling purposes. Constructed from steel with a gloss enamel finish, fitted with a worm drive gearbox and water-resistant single-phase electric motor. The winches are fully reversible and are self holding. Options include weatherproof electrical starting cabinet, up down switch plus a hand pendant and lead if required. AC/DC power or hydraulic.

Docking Capstans



**General Arrangement
(HYD/ELEC/PLANETARY Drive)**



Capstans are usually located on the aft deck to assist in the mooring of the vessel. Foot switch and remote controls can operate capstans. Capstans are supplied with 90° or inline drives for compact installation.

Capstans can be serviced with deck plate intact from top and bottom side.

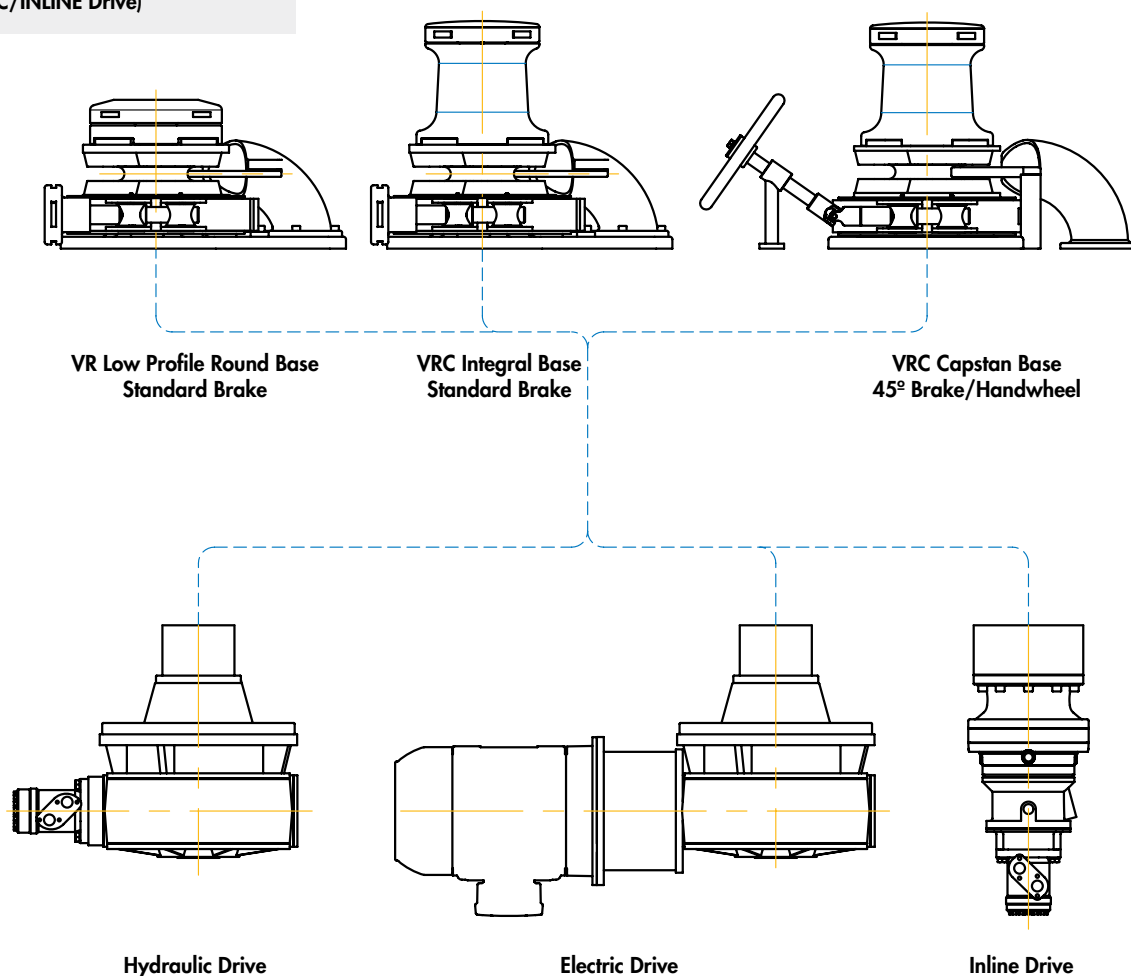
Capstan selection should be considered with warping line sizes and flexibility of warp.

For more detailed information for your specific requirements visit muir.com.au



Vertical Mooring Anchor Winches

General Arrangement (HYD/ELEC/INLINE Drive)



These windlasses have a main vertical shaft and horizontal gypsy.

The vertical configuration allows for single and twin installations with the advantage of installing the windlasses in various positions.

This facilitates the positioning of hawser pipes, chain pipes and anchors. In some cases it may be preferable to install windlasses closer to the centre line or further apart.

Muir vertical windlass design innovation enables the running gear to be stripped from above the deck plate and to remove the drive gear from below deck with the deck plate and chain pipe or chain pipe roller intact.

Under deck rigid self aligning gear drive-to deck plate couplings ensures alignment is maintained at all times with the advantage of locating the gear drive in multiple and preferred positions below deck.

Verticals require less deck space and vertical winches have operational advantages for mooring purposes due to the radial scope of the lead.

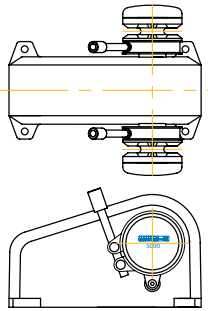
For more detailed information for your specific requirements visit muir.com.au



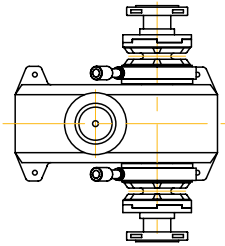
Horizontal Anchor Windlasses for Pleasure & Commercial Vessels

STANDARD FEATURES

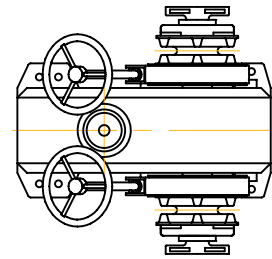
- Single capstan to port, gypsy to starboard
- Reversible motor
- Independent operation of gypsy and capstan
- Heavy duty totally sealed gearbox with ground worm drive and tapered roller bearings in oil bath



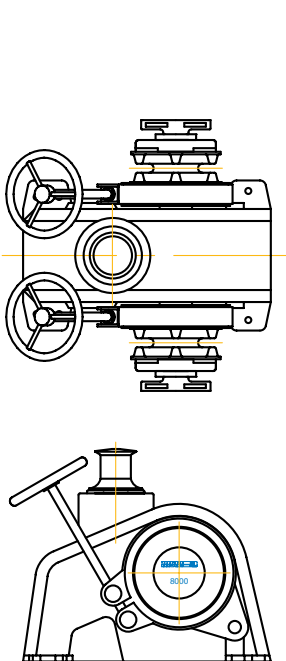
HR5000



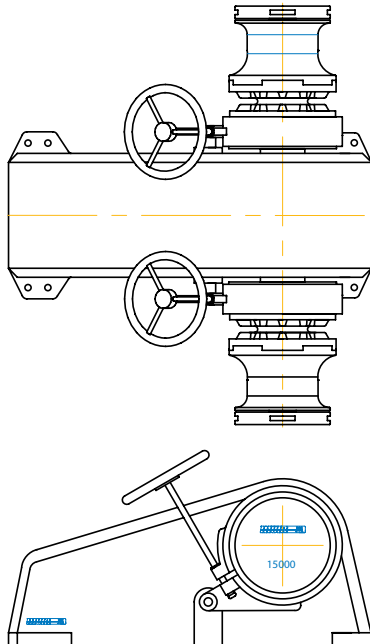
HR6000



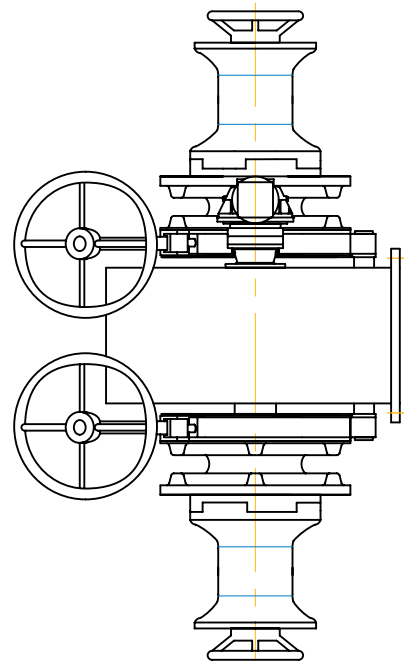
HR8000



HR11000

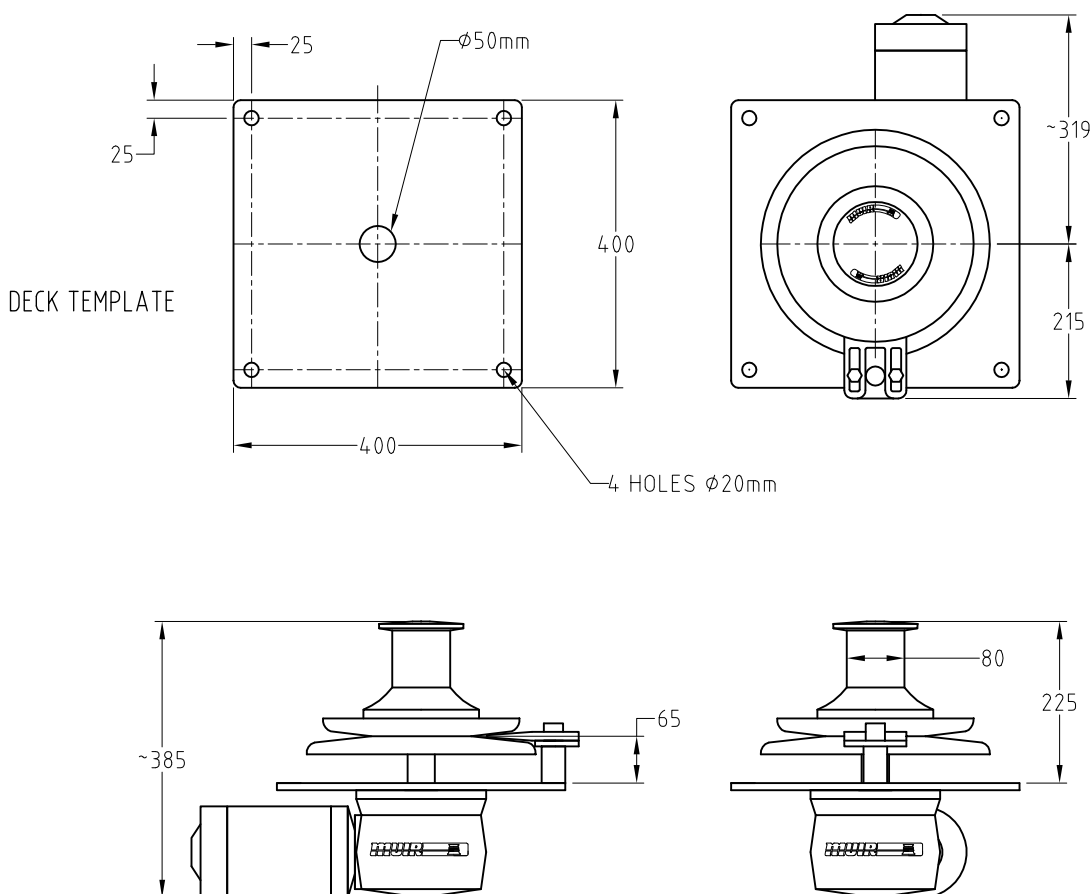


HR15000





Gunwhale Hauler Capstan



DIMENSIONS OF OVERSIDE HAULERS

A range of • Alloy • Bronze • Stainless Steel Line Haulers and Heads

12" (300) 14" (350) 16" (400) 18" (450) 20" (500) 24" (600)

Diameter taken from the base of disk.

LINE HAULING EQUIPMENT

A large combination of fishing gear is manufactured to operate in either the vertical or horizontal position with Alloy or Bronze vee heads used for Droplining, Crab and Cray fishing and Long Lining for light and heavy hauling.

The Gunwhale Hauler Capstan is a light duty line hauler for hauling and recovery of rope such as long lining, lobster traps, crayfish pots, and recovery of buoy weights and dan poles. Available with 12 & 24 Volt DC and Hydraulic Drives. The unique space saving design allows convenient gunwhale mounting saving deck space especially for smaller craft. Fitted with a 330mm-diameter alloy head, alloy capstan & rope tailing peeler provides an easy and safe operation.

Alloy or stainless steel mounting.

PERFORMANCE CRITERIA

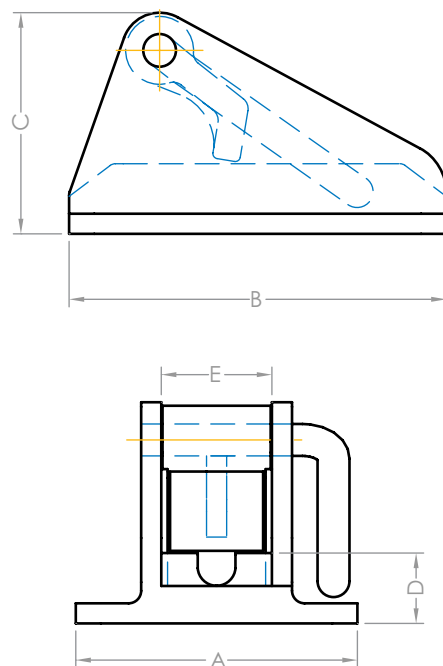
MODEL	GUNWHALE HAULER CAPSTAN	
Power Supply	A/C D/C	HYDRAULIC
Input Power	2 KW	HYD
Hydraulic Flow	-	40 litres/min
Hydraulic Pressure	-	60 Bar
Lifting Force	150kg	200kg
Recovery Speed	60M/min	60M/min
Warping Capstan	Optional	Optional
Construction	Alloy	Alloy
Finish	White Enamel motor / gear	White Enamel motor / gear
Weight	-	-



Chain Stoppers/Compressors/Devil's Claws

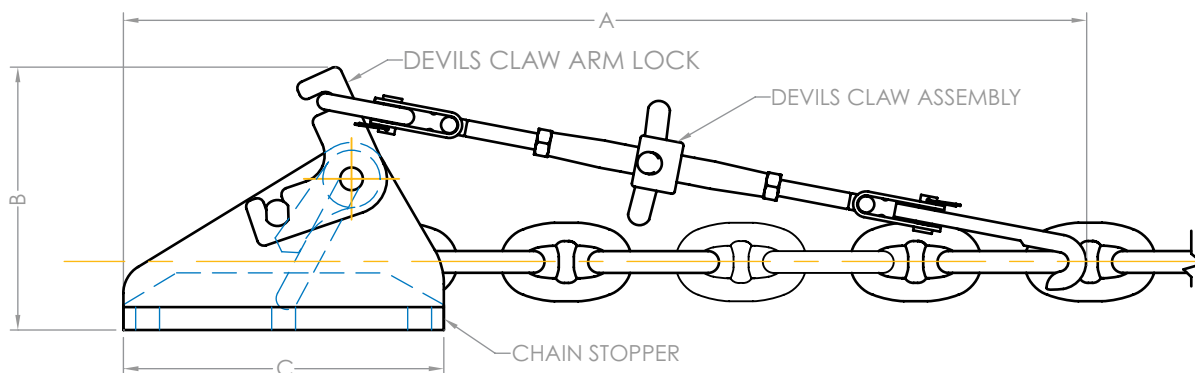
CHAIN STOPPERS

CHAIN SIZE SHORT LINK	A	B	C	D	E
10mm	112	150	88	28	44
13mm	130	185	111	33, 32	54
16mm	197	235	138	43	69.5
	198	238	143	41	70
	192	235	136	42	70
	198	238	136	42	70
CHAIN SIZE STUD LINK	A	B	C	D	E
16mm	209	235	138	43	82
	193	236	143	42	82
	209	238	143	42	82
17.5mm, 19mm	230	285	207	50	94
	230	285	202	50	94
20.5mm, 22mm, 24mm	270	300	205	65	116
20.5mm, 22mm	270	300	205	54	116
24mm, 26mm	280	280	255	71	110
28mm	310	375	256	55	134
34mm	350	385	275	50	160
38mm	388	460	350	76	180



Chain stoppers are strongly recommended for safe anchoring to protect and remove load from the windlass when at anchor, and to prevent accidental free fall of the anchor while under way. The hinged pawl allows the chain to be pulled up automatically, and is easily disengaged to deploy the anchor. To suit all chain types up to 38mm (1 1/2") with optional finishes in chromed bronze, traditional polished bronze, highly polished or bead blasted 316 stainless steel.

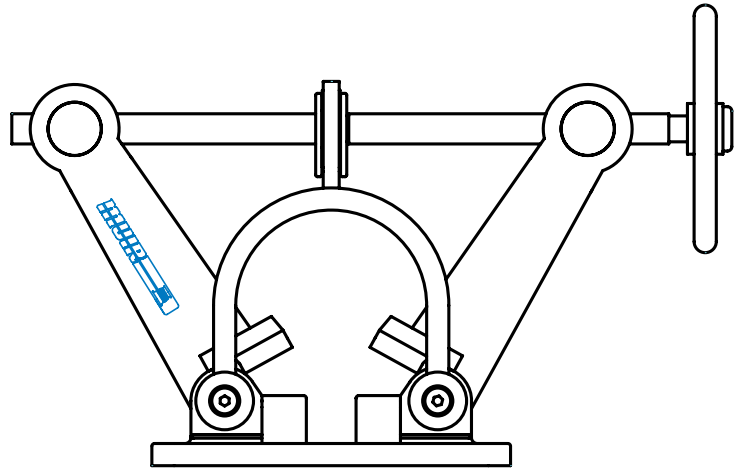
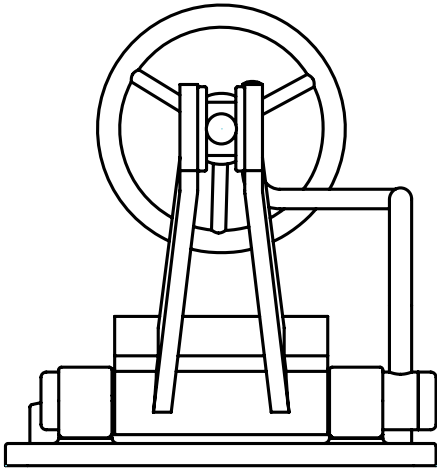
CHAIN STOPPER DEVIL CLAW



CHAIN	A	B
10mm	472	126
13mm	524	1632
14mm, 16mm	688	199
17.5mm-19mm	841	248
21.5mm, 24mm	857	280

Following the same principal of the conventional chain stoppers we combine a separate devil claw, this unique arrangement offers additional safety. The devil claw hooks onto the chain and provides tension on the chain while the anchor is stowed ensuring additional hold while underway. The devil claw can be easily removed or simply secured off to the side. The combined set provided increased safety. Available to suit chain up to 38mm (1 1/2"), and finished in highly polished or bead blasted 316L stainless steel.

CHAIN COMPRESSOR



CHAIN SIZE (mm)	A	B	C	D	E	F	G	H	I
10	69	116	69	CHAIN STOPPERS					
13	85	118	85						
16	138	197	138						
19	205	230	205						
21	215	260	215						
24-30	265	320	265						
34	275	350	275						
38	350	388	350						
12.5-17.5	COMPRESSORS			255	175	281	220	210	275
17.5-26				324	262	281	322	300	368
26-36				425	370	281	420	360	430

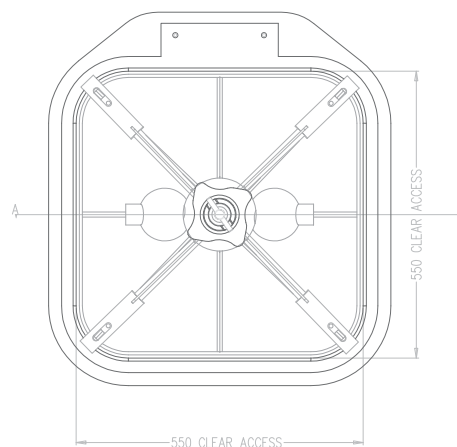
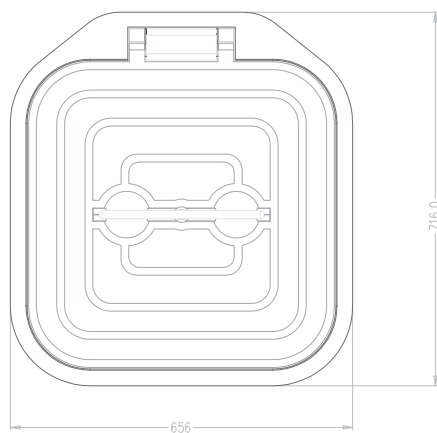
Chain Stoppers, Compressors and Devil's Claws are strongly recommended for safe anchoring by taking the load off the windlass and preventing damage to vital components, especially in severe conditions. Chain compressor clamps the chain via a lever system operated by a handwheel and stainless steel spindle. Chain lock relies on a tongue locking into the chain links preventing the chain from running out. Devil's claws tensions up chain and anchor to ensure safety while travelling.



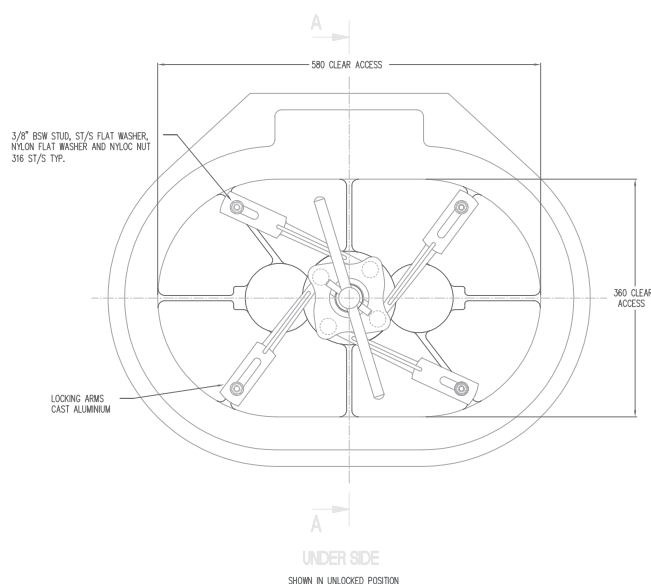
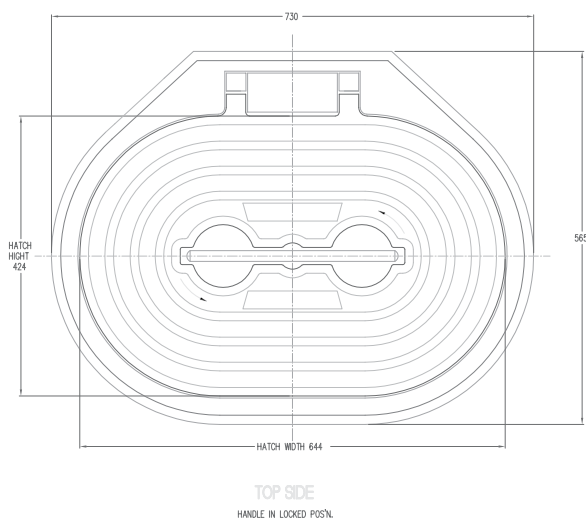


Alloy Hatches

550 Clear Opening Square Hatch



Hinged Oval Deck Hatch General Arrangement



PERFORMANCE CRITERIA

Round Hatches		Oval Hatches	
591601	Standard, 620mm dia	591501	Standard 580x360mm
591600	With internal handle	591500	With internal handle
591650	Deck ring alloy	591550	Deck ring alloy
591651	Deck ring steel	591551	Deck ring steel

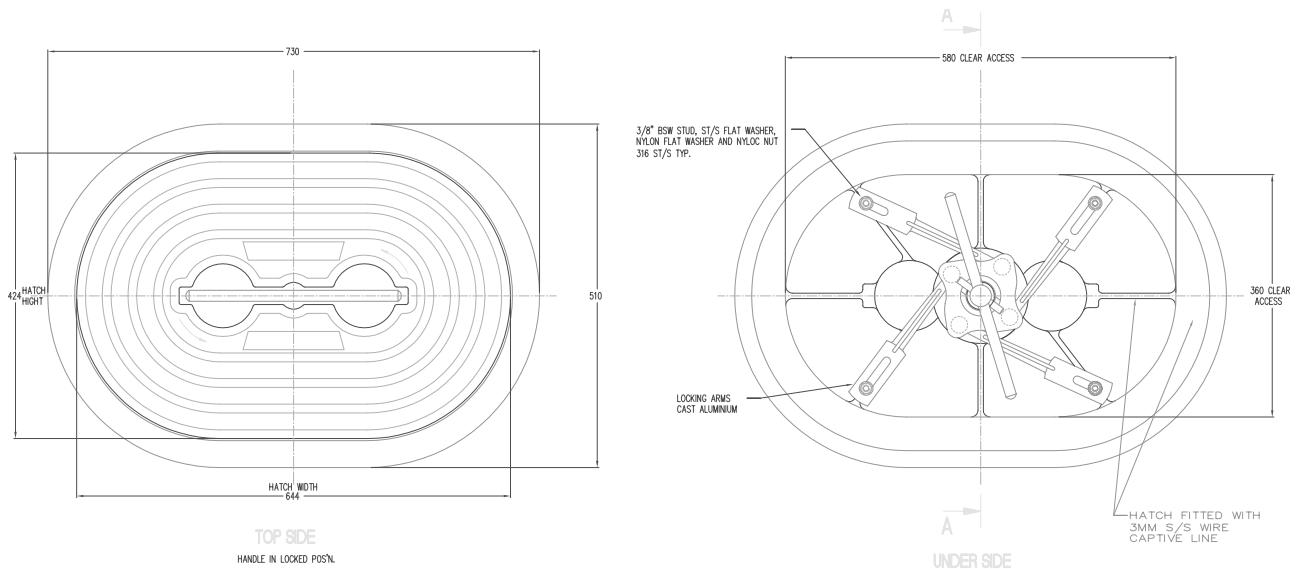
Muir Alloy Oval and Round Hatches with water tight seal and optional quick release handles flush deck access or escape hatch, engine room and stowage compartment hatches.

Constructed from marine grade alloy, water tight seal inside and outside operation.

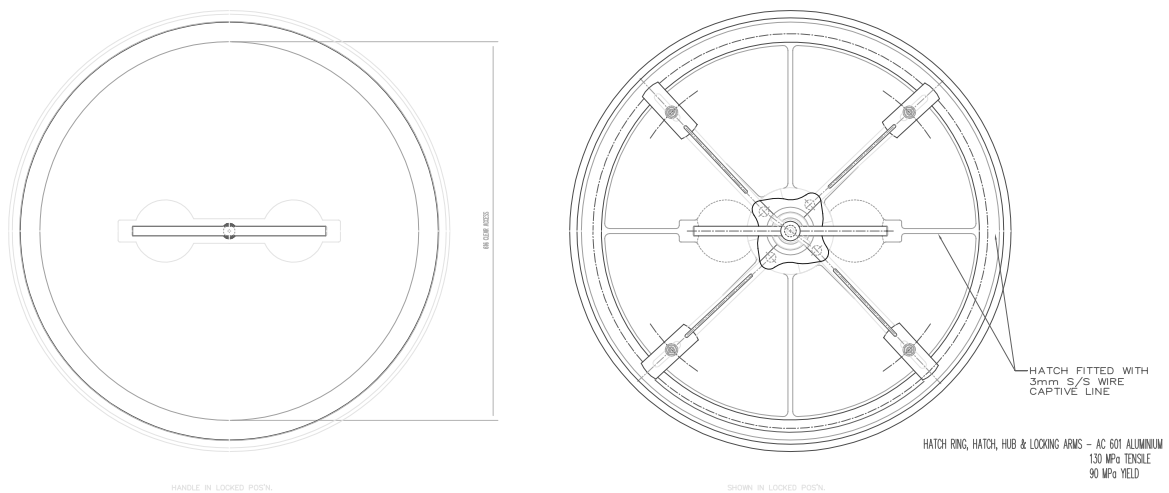
Built to DNV Standard. Hinged and non-hinged versions available.

Alloy Hatches

Oval Deck Hatch General Arrangement



Round Deck Hatch General Arrangement





Anchoring Systems Accessories



CONTROL CABINETS

Configured to suit all windlass voltages and applications in single, two or variable speed and for control of single or multiple windlasses and capstans. Available in various IP66 rated coloured coatings, these units can be supplied to comply with classification requirements.



FOOTSWITCHES

Heavy duty up down switches fitted standard with poly flip top or optional stainless steel or bronze covers with hardwearing U.V. stabilised neoprene boot. Suitable for 12 and 24 volt applications, nickel plated copper contacts provide corrosion free operation. Various colours, finishes and low amp models available.



ANCHORS

Various configurations and sizes for all vessels available including the popular HHP and SHHP in galvanized and stainless steel finishes.



MUIR CHAIN

A wide range and grades of galvanized, black, high tensile, studlink and shortlink chain available. Tested to comply with mechanical properties and ISO standards. Studlink chain can be supplied with test certificates to comply with most classification society requirements.

AUTOANCHOR WINDLASS CONTROLS AND CHAIN COUNTERS



AA570 PANEL MOUNT CHAIN COUNTER AND WINDLASS CONTROL

Instant connection to the AA702 base-station, no cables required back to windlass*
 Easy one-off calibration for multiple station set-ups
 Seamless interface with AA710 hand-held remotes
 Operate 2 windlasses from a single console

Features:

- One touch function deploys and retrieves a preset length of rode
- Preset stopping point and docking alarm on retrieval
- Adjustable backlit display in feet, metres or fathoms
- Graphic LCD screen with intuitive user interface for easy operation
- Displays windlass speed, direction and rode deployed
- Safety lock, windlass log hours and more.
- Typical minimum range 10m (30ft), with antenna option for increased range
- Very secure data transmission with 16 different channel options

*AA570 Console requires connection to 12V /24V power supply.

AA710 WIRELESS HAND HELD REMOTE CONTROL WITH CHAIN COUNTER



AA710 WIRELESS HAND HELD REMOTE CONTROL WITH CHAIN COUNTER

All the features of the AA560 plus options to control thrusters and other deck equipment

- Kit includes 1 remote console and 1 base station.
- Each base station has 6 outputs - up to 3 base stations and consoles can be combined in one system.
- Console displays rode count plus signal strength and battery level
- Control 2 windlasses from a single remote console
- Operate a dual speed windlass
- Shockproof
- 2.4Ghz ISM band
- Meets IP67 waterproof standard
- IEEE802.15.4 compliant
- Console holder and protective cover
- High level wireless transmission security with unique ID
- Ergonomic shape with lanyard connector
- Rubber over moulding for grip and non slip protection
- Antenna available if wireless communication is impeded

AA730 (same features as AA710) but also features

Rugged cable and connectors with:

- Moulded plug and socket rated to IP67
- 2m flying-lead from socket for better connectivity
- Gold plated contacts on plug and socket to reduce corrosion
- Socket sealing cap



**AA730 CABLE
REMOTE CONTROL
WITH COUNTER**



AA601 CHAIN COUNTER FOR GLASS BRIDGE MONITORING

The latest in electronic windlass monitoring from the helm. This black box chain counter is designed to integrate with an on board computer or electronic monitoring system. It displays the count in feet, metres or fathoms. Has a docking alarm and logs windlass operating hours for maintenance. All software protocols are supplied.



More from Muir...



If it's mega...it's Muir

Established in 1968, Muir has become a dominant force in anchoring and mooring technology, recognised today as the anchoring system choice for a large variety and size of luxury motor and sail yachts.

Muir design and manufacture one of the largest ranges of anchoring and mooring systems for vessels up to 150 metres.

Muir have designed and produced anchoring and mooring equipment having set Industry Standards and benchmarks over many years. Continued investment in research and development, design and innovation, keeps Muir at the forefront of the yachting industry. The development of high power to weight ratio equipment with the combination of highly efficient planetary drive gears, medium to high pressure hydraulics, one, two or variable speed AC electric drives will achieve the ideal anchoring system to suit your vessel.

Muir surpass or meet the world's most stringent classification requirements including ABS, IRS, DNV, BV, NKK, GL, CCS, RINA, RRR, RMSR and comply with MCA and USL codes.

Muir running gear is available in polished 316L stainless steel, manganese bronze, chromed bronze and aluminium bronze.

316L polished stainless steel anchor windlasses and mooring capstans of all sizes are being manufactured in larger volumes today resulting in increased affordability.

A Muir anchoring system provides long term reliability, durability and dependability.



If it's recreational...it's Muir

Selecting the appropriate windlass and ground tackle for your vessel and application ensures efficient deployment and retrieval of your anchor irrespective of anchoring or weather conditions. An undersized windlass may well compromise the safety of your vessel and crew. Choosing the right one should prevent costly repairs and damage.

When selecting a windlass there are a number of factors that need to be considered: vessel type, length and displacement, anchor and chain size, windage and the anchoring environment.

A windlass is often exposed to harsh elements therefore it is important to consider the materials and components it is manufactured from. Muir windlasses incorporate high quality components including chromed bronze and high quality marine grade 316 Stainless Steel running gear, stainless steel drive shafts and marine coated alloy housings, to ensure strength, durability and long term usage.

A powered windlass with some form of manual operation or override is always a wise choice and ensures peace of mind that the anchor can be retrieved if power failed or in an emergency. The type and style of windlass you select will depend on the depth of the chain locker, the fore deck layout, power options and personal preference.



www.muir.com.au



SGC1



Star Express



HR22000



SD150 AC



SGC4



VRC1300 RDM



Inace



SD450



Evolution



Delphin



SGC3



SD100



Chain Compressor



Muir products are sold, serviced and supported worldwide.

Head Office:
MUIR Windlasses Australia
100 Browns Road, Kingston
Tasmania 7050, Australia

International Tel: +61 (0)3 6229 0600
International Fax: +61 (0)3 6229 7030
Email: sales@muir.com.au
Web: www.muir.com.au



AUSTRALIA • NEW ZEALAND • EUROPE • UK • USA • AMERICAS • ASIA • MIDDLE EAST • PACIFIC • SCANDINAVIA • AFRICA

The Muir Quality Management System is certified as being in conformity with ISO9001.



DNV Certification Pty Ltd
Quality Assured ISO9001

Muir reserves the right to alter specifications without notice. All rights reserved. While all due care and attention has been taken in the preparation of this catalogue no responsibility shall be taken for errors or omissions.

THIS CATALOGUE SHOULD NOT BE USED FOR INSTALLATION PURPOSES

Any reference to MUIR or MUIR'S in this catalogue implies MUIR ENGINEERING GROUP PTY. LTD.

© 2013 Muir Engineering Group Pty. Ltd.



MUIR  **SINCE 1968**

www.muir.com.au