

What is g-pda.®?

g-pda.® is a new, fully integrated and consistently mobile usable, complete software solution for all producing horticultural businesses.

g-pda.® is a complete ERP system, which is able to map all processes of a producing nursery from the entire personnel management, production planning and control, inventory and culture management to the purchase and administration of goods.

g-pda.® is a complete CRM system, with true LEAD management, online availability and direct conversion of sales into production and logistics planning.

g-pda.® is really and truly modular, from the small peer-to-peer solution in-house, via the intranet with a physical server in your company, up to the multi-national cloud solution, infinitely scalable at any time.

g-pda.® = IoP Internet of Plants

g-pda.® = Horticulture 4.0



Who is g-pda.®?

g-pda.® is developed and implemented by very experienced horticulturists.



JayVee Green Consult

Dipl.-Biol. Jens Varnskühler

Wilhelm-Busch-Str. 10

49076 Osnabrück

Germany

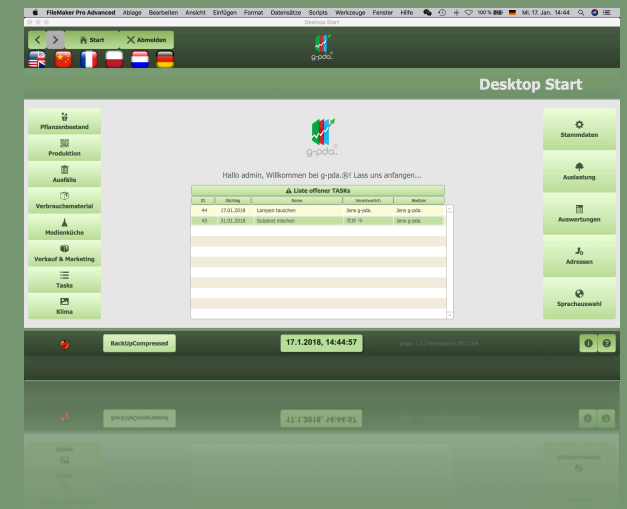
Tel.: +49 170 8002703

info@grower-pda.de

www.grower-pda.de



Internet of Plants Horticulture 4.0



ERP.

CRM.

Cloud.





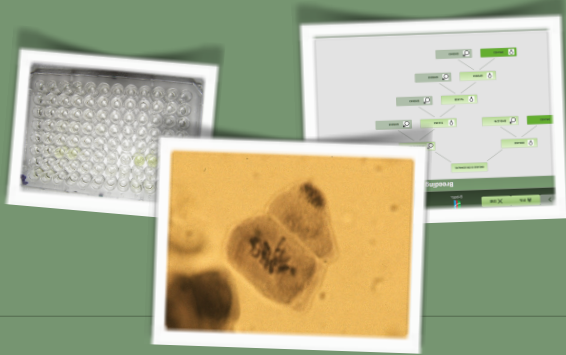
IoT - Internet of Plants

Have you ever wondered what that should be? "IoT - Internet of Things"? This term, first used by Kevin Ashton in 1999, refers to the next stage of the Industrial Revolution, namely the networking of information and its making available on an information network.

A concrete example is the parcel tracking in the internet through the automatic collection of information. For example, by reading barcodes at distribution stations, both the consignee, the transporter and the consignee are able to track the parcel at any time.

g-pda.® offers exactly that - specially adapted to the requirements of the green industry: IoT!

For example, if my smartphone tells me in the morning that 12m3 of new pot substrate will be needed in two weeks at 11, and I'm ready to send out new pot substrate order proposal (or multiple supplier quotes) for easy approval, I can make my purchase much more effective than if I had to talk to the production first, what quantities of which substrate would be needed where, then find out where we ordered last time for which price, etc.



Also in research: g-pda.® in breeding, testing, in the 51 laboratory, etc. Documenting and evaluating crossbreeds. All reporting obligations at the push of a button!

g-pda.®: mobile

Mobile - because g-pda.® runs on a platform that integrates generic mobile usage, you or your employees can not only access all relevant data in the office. No, you can view the entire culture history of a plant set in the middle of your inventory with your smartphone. Or see what tasks have been done for today or are still open.

g-pda.®: modular

Modular - because g-pda.® is really an truly modular, you can choose a step-by-step implementation of your individual IoT, starting with the actual production (production staff, incoming and outgoing work, district administration and direct costs). A year later you can continue without much additional effort to implement the order management with production planning.

g-pda.®: flexible

flexible - because g-pda.® runs on a flexible platform, we can offer a single-seat, a peer-to-peer network for a single site, a physical server in your premises for larger operations, or a cloud-based solution for fully scalable plants with multiple locations and field staff. Always changeable with the same data model and with little effort!



Growers personal digital assistant



Smartphone



Tablet



Labeling laboratory



Labeling greenhouse

Stocks always under control!



From the single-user solution ... up to the fully integrated cloud-based version.