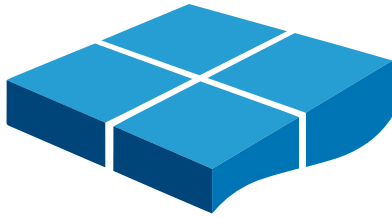


Marinefloor



p o n t o n m o d u l a i r e

2019/2020 CATALOG

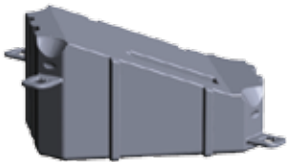
Basis elements

Cube Eco-System® MARINEFLOOR



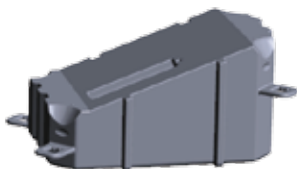
Size: L x l x H: 50 x 50 x 40 cm - Weight: 6,50 Kg - Buoyancy: 91,5 Kg
Resistance of assembling rings: 2.000 Kg - Patented male/female interlocking system Shockproof
PEHD (High Density Polyethylene) - Antistatic, low flammability
Standard colours: beige and light grey - Other colours on demand (1 000 pieces minimum). Anti-skid structure - Based on 4 plots (increase stability, reduce current pressure) - ECO Patented

Left Slider



Size: L x l x H: 75 x 50 x 40/20 cm - Buoyancy: 95 Kg - Weight: 8 Kg
Flat base - Standard colour : light grey - Shockproof, PEMD (Medium Density Polyethylene) Drive-on-dock for boats and jet-skis.

Right Slider



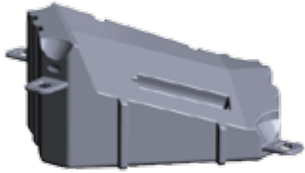
Size: L x l x H: 75 x 50 x 40/20 cm - Buoyancy: 95 Kg - Weight: 8 Kg
Flat base - Drive-on-dock for boats and jet-skis.
Shockproof, PEMD (Medium Density Polyethylene) Standard colour: light grey

Slider Stop *(new product)*



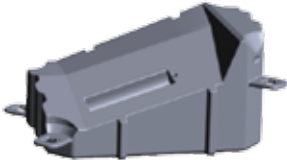
Stop the boat race or jet-ski to protect the engine + mooring
Size(L x l x H): 150 x 50 x 40/20 cm / Buoyancy: 210 kg / Weight: 12 kg
Flat base, Antichoc, Shockproof, PEMD (Medium Density Polyethylene)
Standard colour: light grey

Left Entrance Ramp – 1 piece/dock



Size: L x l x H: 75 x 50 x 40/20 cm - Buoyancy: 95 Kg - Weight: 7 Kg
Flat base - Standard colour: light grey - Shockproof, PEMD (Medium Density Polyethylene) Drive-on-dock for boats and jet-skis.

Right Entrance Ramp – 1 piece/dock



Size: L x l x H: 75 x 50 x 40/20 cm - Buoyancy: 95 Kg - Weight: 7 Kg
Flat base - Standard colour: light grey - Shockproof, PEMD (Medium Density Polyethylene) Drive-on-dock for boats and jet-skis.

Elements of structure

Centre Pins



Attaches by interlocking, is locked by the stainless steel centre pins' key
Size: Ø x Ø x H: 18 x 4,6 x 24 cm - Weight: 0,68 Kg
Shockproof, PEHD, only used to connect 4 cubes together
Standard colours: beige and light grey - Other colours on demand (1 000 pieces minimum)

Bolt, Nuts and Ring



Fixed on the structure perimeter thanks to a special key
Size: 4,3 x 14,5 cm
Shockproof, HDPE
Colour: white

Locking Stainless Steel Key



Essential key for assembling Marinefloor structures
It is used to lock the center pins, remove them and many other common applications in assembly.
Marine Quality Stainless Steel - Weight : 2,5 Kg

Fender



Absorb the docking shocks, does not scratch boat hulls
Size (D x H): 33 x 27 cm / Weight: 0,7 Kg
LDPE shockproof
Standard colour: black or orange
Other colours on demand (minimum 100 pieces)

Heavy Fender



Absorb the docking shocks, does not scratch boat hulls
Can be used to fix handrails (except for Public application)
Size (Ø x H) : 33 x 27 cm / Weight : 1,40 Kg
LDPE shockproof
Standard colour: egg shell
Other colours on demand (100 pieces minimum)

Fender for Swimming Pontoon



Absorb the docking shocks, does not scratch boat hulls
Displays the rules to follow as symbols.
Size (D x H): 33 x 27 cm / Weight: 0,7 Kg
LDPE shockproof
Standard colour: orange
Other colours on demand (100 pieces minimum)

BoatFloor and JetFloor System accessories (*)

*refer to the assembly instructions for correct installation.

Rolls for Slider and Ramp



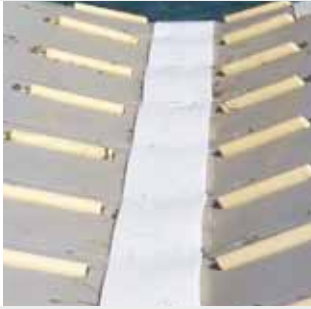
For boat and jetski
Fixed by interlocking its axis in the half-sliders or half-entrance ramps cavity
size (Ø x L) : 7,58 x 29 cm
MDPE beige - Shockproof

Fixing Pads + stainless screws



To fix the rolls into the sliders
Stainless steel marine quality screws
Lot of 10 pieces + 25 stainless steel screws A4

Central Protection Plates 3mm + screws



Equipped with stainless steel screws, it is fixed on the central ball joints. Very slippery, it facilitates the ascent and descent of the boat while preventing pins unlocking.

Its lifetime depends of the type of strake, the weight of the boat and the frequency of exits.

Lot of 10 pieces + 50 stainless steel screws A4

Side Protection Plates 5mm + screws



Fixed in the extension of the rolls to avoid the contact of strakes pronounced directly with the cradles.

This plate avoids premature shearing of the cradle. Its lifetime depends of the type of strake, the weight of the boat and the frequency of exits.

Set of 2 pieces + 10 stainless steel A4 + butyl

Stainless Fixation Plate for Dock



To fix the dock to a traditional floating pontoon. The holes allow it to be adapted to most of conventional pontoons, by attaching themselves in the groove reserved for the mooring cleats. The fixing bolts must be provided by the harbor master's office (identical to the cleats-depends on each pontoon manufacturer).

Size: Plate (L x l x H) : 330x200x8 mm

Pipe (\varnothing x Ep) : 42x2 mm - Length: 1m

Mooring accessories

Mooring ring



Is necessarily fixed on 4 cubes as a traditional pins

Mounted into a center pin

Weight: 2 kg

Tensile strength : 2.000 Kg

Marine quality stainless steel

Heavy Mooring Bollard



Use for heavy boats (several tons)

Mounted on 4 center pins

Tensile strength : 12.000 Kg

Size: L x l x H x \varnothing : 76 x 76 x 27 x 10 cm

Weight: 12 Kg

Marine quality stainless steel

Mooring Bar PVC 20mm



Used for connecting a chain to a cube structure (cushioning shocks)
Fixing with bolt and nut
Can be applied for mooring on dangling
Size (L x l x H) : 590 x 90 x 20 mm / Weight : 1.9kg
20mm PVC pressed - Color : dark grey

Lifting Sling



Used to fix swimming pontoon (in the center, 4 units), can be applied to connect a chain on a cube structure (cushioned shocks)
Tensile strength : 2 T
Dimensions : 117cm x 2 cm – Polyamide 2mm

Security accessories

Stainless Handrail



Fixed 50 cm back from the edge like traditional center pin
Mounted on 1 center pin - Weight : 4,00 kg
Dimensions : Ø x H : 4,2 x 110 cm - Marine quality stainless steel
Distance between each rail from 2 m to 3 m – linked by 16 mm red/orange ropes as handrail (sold separately)

Stainless U Handrail



Fixed 50 cm back from the edge like traditional center pin Mounted on 2 center pins - Weight : 8,00 kg
Dimensions : Ø x H : 4,2 x 110 cm - Marine quality stainless steel Mainly used for boarding passengers

Stainless Steel Ladder



Equipped of 3 submerged rungs
Mounted on 4 centre pins
Adaptable on every platform's side
Weight : 16,20 kg

Life Buoy + Box + Lifeline



Storage box with 1 life buoy Ø73 cm , 1 buoyant lifebuoy line 30m. Can be fixed on a wall or a handrail.
This box has a window to check the presence of the buoy

Safety Net 100 -1mx20m



Applied and fixed on handrails (rope 16mm)
Square 100 x 100 mm – safety net rope around the perimeter
Length : 1m x 20m (available in 10m)

Ropes



Polyamid rope 3 strands Ø16mm
Color: Orange Security or Blue/White/Red
Coil of 220 m without reel
Sales unit in meters: 20/50/70/100/120/150/170/200/220

Anchoring accessories

Screw-in anchors 1m50 galvanised -2 plates



2 plates galvanized – dimensions 1.5m x30mm 2 plates 250x10
Installation in loose soil (sand, mud, loose soil))
Tensile strenght 2 T (depending of the ground)
mechanical or manual installation

Screw-in anchors 1m25 galvanised -1 plate



1 plate galvanized – dimensions 1.25m x30mm 1 plate 250x10
Installation in loose soil (sand, mud, loose soil))
Tensile strenght 1 T (depending of the ground)
mechanical or manual installation

Galvanized chain 14mm



Galvanized Marine Quality
Tensile strenght 25 T
Weight: 4.44kg / ml

Stamped Bow Shackle 14mm - Galvanized



Galvanized Marine Quality
connection on folded chain

Flat anchor 10 Kg



Anchor flat for mooring on sandy or muddy bottoms.
Manufactured in galvanized steel. Mobile rod.
Weight: 10 kg
Used for a weight between 1 and 2 tons.

Flat anchor 7 Kg



Anchor flat for mooring on sandy or muddy bottoms.
Manufactured in galvanized steel. Mobile rod.
Weight: 7 kg
Used for a weight between 0,5 and 1 ton.

White Rope 16mm



Polyamid rope 3-strand White with Blue point 16mm
Reel of 200 m
Sales units : 25m, 50m, 75m, 100m, 125m,150m,175m et 200m

MARINEFLOOR IS ALSO ...

Customizing cubes to your image/logo



Cube's production in the colors of your graphic chart for a perfect integration with your landscape (1000 cubes min.).

Creation of a borrow to mark the cubes with your logo instead of our logo.

On estimate only

Custom projects



You have a particular project, an idea of new use of our cubes? Whatever you want to float, do not hesitate to contact us to talk about it.

We have used our system for a wide variety of applications and most of the time original, we will know how to use them to realize with you the most crazy projects!

Engineering - Installation - Event Rentals - Seasonal Rentals



The strength of our team is to fit your requirements.

Need to be accompanied for the structural reflection of your project?

Need a fitting service?

Need our products on a short time, in autonomy?

Need an all inclusive service for an event?

We have a solution to your needs!

Contact us!