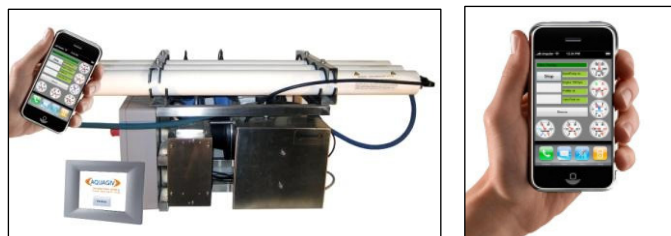


## AQUAGIV PLATINUM-Series – fully automated watermakers

### Facts:

Technology:	Reverse Osmosis
Salt Rejection:	min. 99.5 %
Salinity Range:	up to 50 000 ppm
Operating Pressure:	up to 800 psi
Feed Water Pressure:	0 to 60 psi
Water Temperature:	0.5°C - 45°C



**NEW: The only watermaker which is fully IP remote capable**

**Energy Consumption:** 230V 50Hz – 1500 Watts, average 6,0 amps at 230V

### Models and Output:

Model	Output/hour	Output/day	Membranes
80-230V	80 ltrs.	1.920 ltrs.	1 x 40"
140-230V	140 ltrs.	3.360 ltrs.	2 x 40"
180-230V	180 ltrs.	4.320 ltrs.	3 x 40"
210-230V	210 ltrs.	5.040 ltrs.	4 x 40"
250-230V	250 ltrs.	6.000 ltrs.	4 x 40"

Reverse Osmosis performance varies with the feed water temperature and salinity. The rated performance is tested at 26°C / 80°F water temperature and a salinity of 35000 ppm TDS.

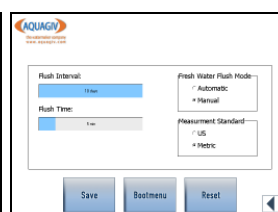
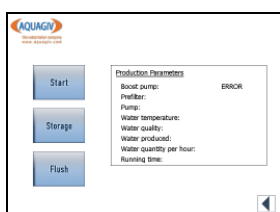
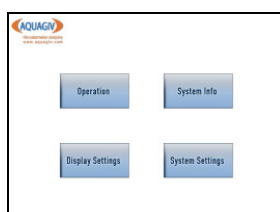
### About:

The **Platinum** Series with capacities of up to 5 m<sup>3</sup>/day has been especially designed for highest performance. Key facts are: power efficiency, ultimate reliability and low maintenance cost.

Using the Danfoss axial piston pump the first maintenance is not before 8000 hours operation time!

The **APM System** guarantees a constant pressure and optimal performance of the high-pressure pump. The load of the electric motor is kept as low as possible thereby ensuring low-power consumption and low wear on the watermaker.

The operation is done with a water- and impact-proof Infrared-touchscreen display. Connecting your Watermaker with your water tank gauge will thereby guarantee a constant supply of fresh water.



Display - Screenshots

## AQUAGIV PLATINUM-Series – fully automated watermakers

### Standard System Features

- 1 Prefilter housings
- 1 High-pressure pump unit
- 1-4 Pressure vessel(s) with ro membrane(s)
- High pressure hoses
- Low pressure hoses

### Options:

- 2<sup>nd</sup> prefilter for best filter results
- Electronic prefilter gauges
- Flush kit for fully automated flush
- Remote control coloured 3,5" TFT display
- Wireless/internet remote control option

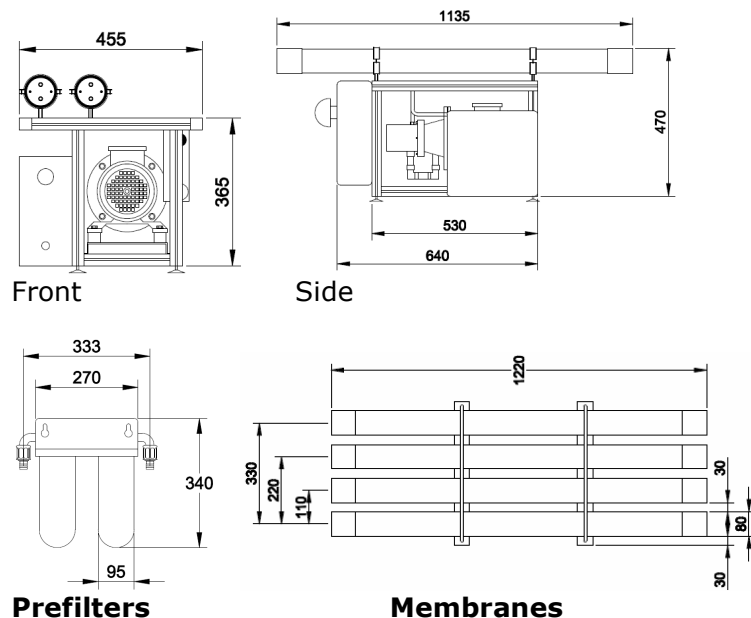
### Features

- Made in Germany
- Low maintenance axial piston pump
- No electronic circuits close to seawater
- Corrosion resistant marine aluminum frame
- No proprietary equipment- spares and consumables may be obtained anywhere

### Hose connections

- |                 |                         |
|-----------------|-------------------------|
| Seawater intake | 19 mm - 3/4"            |
| Freshwater hose | 10 mm with 1/2" adapter |
| Brine discharge | 19 mm - 3/4"            |

### Dimensions



modular or framed design available

AQUAGIV PLATINUM-Series – fully automated watermakers

**Optional accessories:**



**Prefilter-Kit**

5 x 20 µ prefilter  
5 x 5 µ prefilter  
2 x charcoal filters



**Cleaning-Kit**

1 x alkaline cleaning compound 250  
1 x acid cleaning compound  
1 x storage compound

Technical datasheet, issued December 2010. Subject to alterations.  
Find the latest datasheets under <http://www.aquagiv.de/download-center.htm>