



For marinas, shipyards and ports Cimolai Technology can supply:

- **MOBILE BOAT HOISTS** for dry-docking and launching different types of boats
- **MOBILE BOAT TROLLEYS** for transporting and storing boats
- **SHIP LIFTING PLATFORMS** and complementary systems for dry-docking and launching ships
- **SHIP TRANSFER SYSTEMS** that work together with the ship lifting platforms
- **MOBILE STRADDLE TRANSPORTERS** and **RAIL GANTRY CRANES** for handling, lifting and turning ship blocks

Moreover, the company offers:

- **Efficient after-sale / spare parts service**
- **Maintenance by means of a team of skilled technicians**

Cimolai Technology aims to confirm itself as the reference manufacturer and supplier of machines for lifting and transporting operations.

The company - having all the services required by a dynamic and always growing organization - offers its maximum collaboration to the Customer so as to pick the best solutions from the very design phase and supply tailor-made works.

## MAIN PREMISES



## MANUFACTURING WORKSHOPS



### CIMOLAI TECHNOLOGY SpA

Via dell'Industria e dell'Artigianato 17 - 35010  
Carmignano di Brenta (PD) - Italy  
+39 049 940 4539 - [info@cimolaitechnology.com](mailto:info@cimolaitechnology.com)  
[www.cimolaitechnology.com](http://www.cimolaitechnology.com)



**CIMOLAI Technology® spa**  
Special Equipment

# CIMOLIFT



## Ship lifting platforms



The ship lifts **“CIMOLIFT”** are designed to cope with the Customer’s specifications and the requirements of classification agencies such as Lloyd Register. Cimolai Technology’s capabilities in terms of design, resources and production allow the supply of a turn-key system, including the on-site assembly and commissioning of the whole hauling and launching equipment.

In addition to supplying ship lifts with capacities spanning from about 1.500 tonnes to over 30.000 tonnes, Cimolai Technology designs and supplies also other complementary systems for:

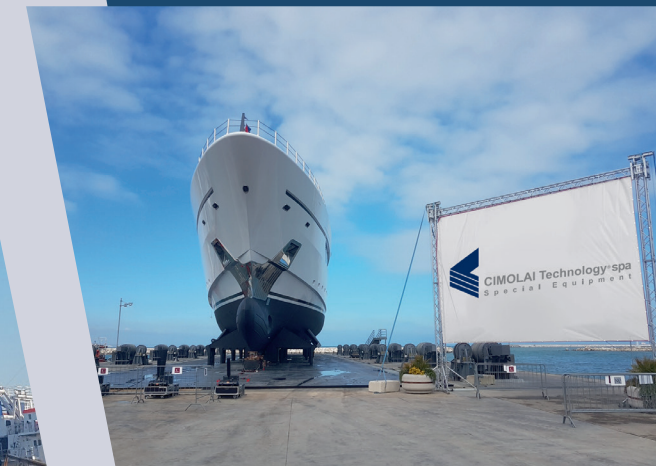
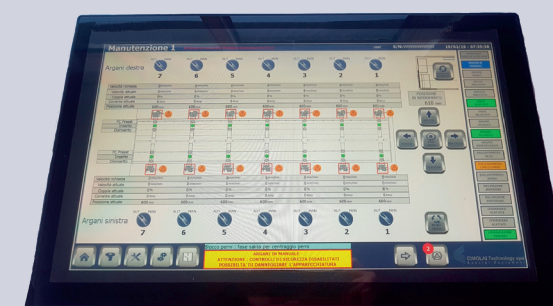
- **Hauling in and positioning the vessel**
- **Vessel docking**
- **Vessel side support (hydraulic arms)**
- **Vessel transfer (on rails or tyres)**

The platform is designed as a “rigid structure” based on the continuous beam principle. It consists of a series of main transversal beams supported at the extremities by winches fixed on the dock and of longitudinal beams that connect the transversal beams and support the loads of the vessel and of the transfer system.

## SHIP LIFTING SYSTEM “CIMOLIFT”

The control system, **fully developed by Cimolai Technology’s** engineering team, is specifically designed to be user-friendly and to allow real-time supervision of the hauling and launching operations in order to guarantee high safety standards. The main display of the control system shows the loads on each winch and the platform position; additionally, the operators can check the ship-lift status through a set of menu options.

A modem allows Cimolai Technology’s technicians to provide remote assistance to the operator in case of need.



The lifting system is operated by electrically-powered winches controlled in closed loop by inverters. The winches are conceived and manufactured for installation in marine environments.

