



**MORE THAN JUST  
UNDERWATER  
LIGHTING.**

Interior and Exterior Lights

Engine Room Lights

Navigation Lights

Strip Lights

Marine Hardware

Deck Furniture

#### UNDERWATER LIGHTS USA

3406 SW 26th Terrace, C-6/7  
Fort Lauderdale, FL 33312

Tel: +1 954 760 4447  
Toll Free: +1 866 772 0130  
Fax: +1 954 525 3261

[www.seavision.com](http://www.seavision.com)  
[sales@seavision.com](mailto:sales@seavision.com)

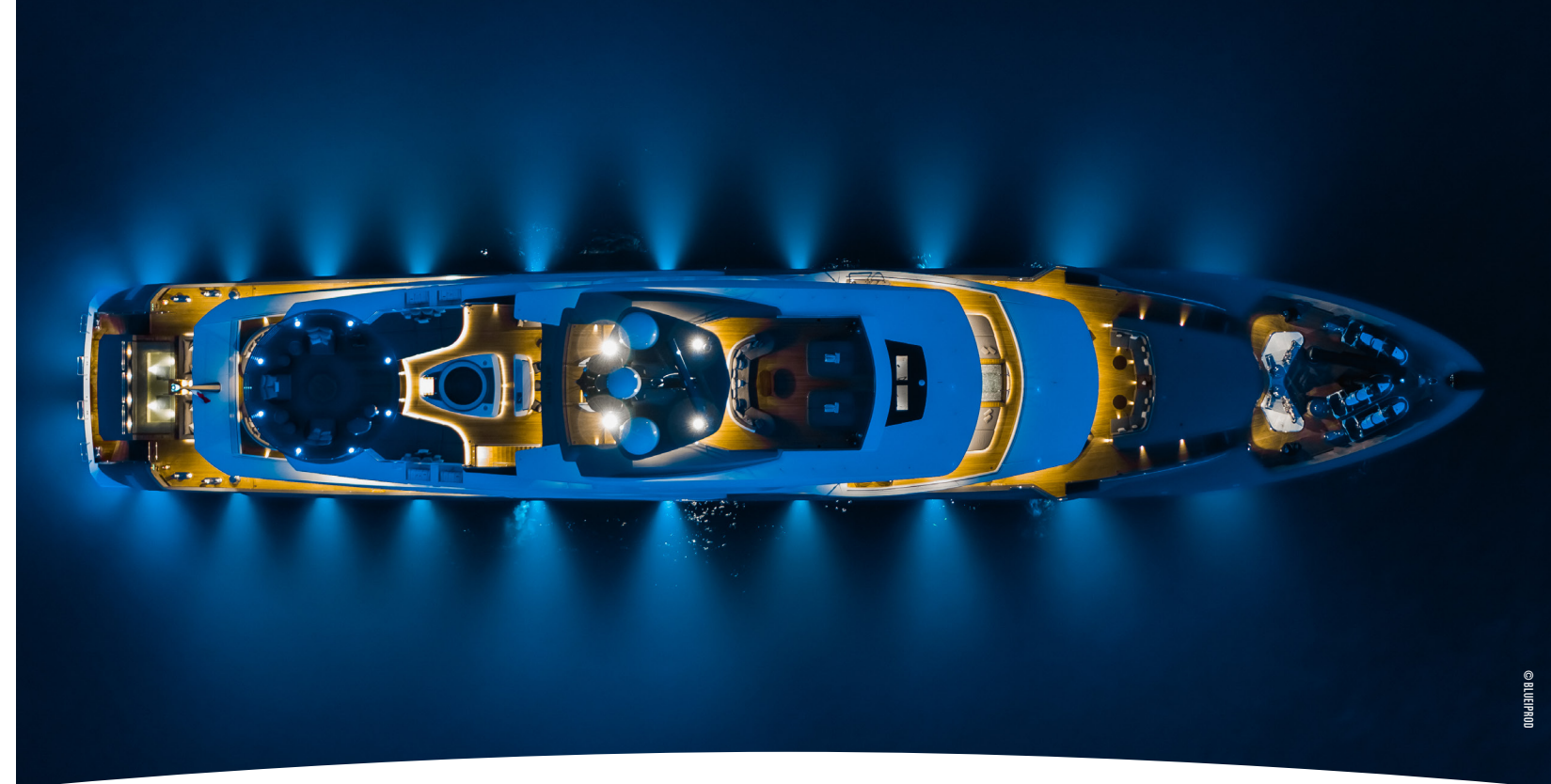
#### UNDERWATER LIGHTS EUROPE

16 rue Rouaze  
06400 Cannes  
France

Tel: +33 (0) 497 21 02 96  
Fax: +33 (0) 497 21 10 96

[www.seavision.com](http://www.seavision.com)  
[sales@seavision europe.com](mailto:sales@seavision europe.com)

**seavision.com**



**seavision.com**



**SEA VISION® BY UNDERWATER LIGHTS USA IS THE WORLD LEADER IN QUALITY BOAT & YACHT LIGHTING**



## FIBERGLASS HULLS

### DC POWER

#### SV44 LED GEN II

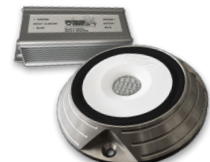
- Ideal for any small boat or center console up to 50ft
- Surface mounted for simple installation
- Thermoplastic housing, no corrosion, no bonding required
- Available in white or blue
- 1826 lumens in white, independently verified
- 10 – 30 VDC



patent pending

#### SV55 LED GEN II

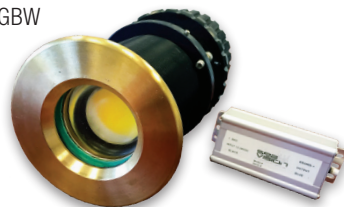
- Robust light suitable for all boats up to 50ft
- Surface mounted, simple installation
- Available in white, blue or RGBW
- COB high density chip, the brightest
- 4660 lumens in white, independently verified
- 10 – 30 VDC



patent pending

#### SV19 LED GEN II

- Ideal for mid-sized boats
- LED COB high density chip, the best
- Available in white, blue or RGBW
- Advanced silicone optic technology
- 3484 lumens in white, independently verified
- 10 – 30 VDC



- Available in HID
- Installed on transom, hull sides or through the bottom

#### SV31 CAMERA

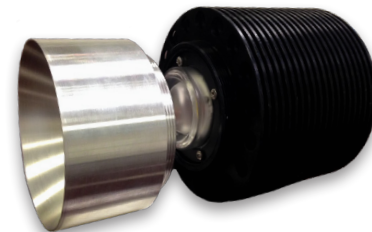
- Ideal for steel or aluminum yachts
- Available weld thru hull fittings from 0 – 50 degrees
- Broadcast quality picture
- NTSC or PAL
- Ideal for safety or viewing the underwater life
- Can be combined with lights for night viewing



- 12VDC
- Custom cameras available

#### SV14 ALU/SS LED

- Weld in light for all steel and aluminum yachts
- Available weld thru hull fittings from 0 – 50 degrees, suitable for all hull shapes
- Advanced silicone optic combined with COB LED chip
- No additional cofferdam required
- Available in white, blue, green, RGB or RGBW
- Multiple options for RGB control
- 21,685 lumens in white, independently verified
- 100-277 VAC, 50/60Hz
- Available in HID
- Installed on transom, hull sides or through the bottom



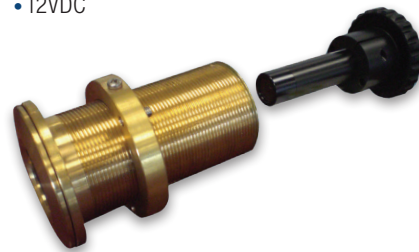
#### SV20 LED

- Suitable for any small to mid-sized boats
- High density COB LED chip, the best quality
- Thru hull light, serviceable from inside the boat
- Available in white, blue
- 3040 lumens in white, independently verified
- 12 or 24VDC
- Available in HID
- Installed on transom, hull sides or through the bottom



#### SV27 CAMERA

- Ideal for fiberglass boats
- Broadcast quality picture
- NTSC or PAL
- Ideal for safety or viewing the underwater life
- Can be combined with lights for night viewing
- 12VDC



### AC POWER

#### SV10 LED

- Suitable for any mid to large vessel, GRP or wood
- Serviced from inside the hull
- Advanced silicone optic combined with COB LED chip
- Installed on transom, hull sides or through the bottom
- Available in white, blue, green, RGB or RGBW
- 21,685 lumens in white, independently verified
- 100-277 VAC 50/60Hz
- Available in HID



#### SV60 LED

- Surface mounted, suitable for all mid to large sized boats with limited interior access
- Advanced silicone optic combined with COB LED chip
- Available in white, blue, green, RGB
- Multiple options for RGB control
- Serviceable in water, requires additional backing plate
- 21,685 lumens in white, independently verified
- 100-277VAC 50/60Hz



### RETROFIT

#### KITS FOR EXISTING SEA VISION HID PRODUCTS

##### SV19 LED - RETROFIT

- Direct LED replacement for 50W HID
- Haul out not required for replacement
- Advanced silicone optic combined with COB LED chip
- Available in white, blue or RGBW
- 3484 lumens in white, independently verified
- 10 – 30 VDC



##### SV20 LED - RETROFIT

- Direct LED replacement for 35W HID
- Haul out not required for replacement
- Latest high density COB LED chip
- Available in white or blue
- 3040 lumens in white, independently verified
- 12 or 24VDC



##### SV10 LED - RETROFIT

- Direct replacement for 150W HID
- Haul out not required, retains original thru hull fitting
- Advanced silicone optic combined with COB LED chip
- Available in white, blue, green, RGB or RGBW
- 21,685 lumens in white, independently verified
- 100 – 277 VAC, 50/60Hz



##### SV14 LED - RETROFIT

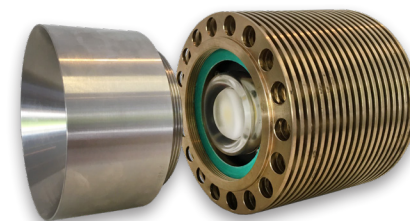
- Direct replacement for 150W /250W HID
- Haul out not required, retains original thru hull fitting
- Advanced silicone optic combined with COB LED chip
- Available in white, blue, green, RGB or RGBW
- 21,685 lumens in white, independently verified
- 100 – 277 VAC, 50/60Hz



These retain any existing class approvals.

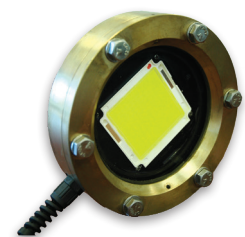
#### SV14 TANK LIGHT

- Weld in light suitable for all steel and aluminum yachts
- Approved for water or ballast tanks
- Available weld thru hull fittings from 0 – 50 degrees, suitable for all hull shapes
- Advanced silicone optic combined with COB LED chip
- Available in white, blue, green, RGB or RGBW
- No cofferdam required
- 21,685 lumens in white, independently verified
- 100-277 VAC, 50/60Hz



#### DV59 LED

- Designed specifically for lighting up underwater areas, suitable for salt or freshwater.
- High density LED chip, brightest and most recent development
- Ready to install and utilize immediately
- Available in white, blue, green or RGB
- Customizable, built to suit specific requirements
- 15000 lumens in white, independently verified
- 100-277 VAC, 50/60Hz



### DOCKS

#### OFFICES IN EUROPE AND USA

#### WORLDWIDE DISTRIBUTOR NETWORK

#### 2 YEAR WARRANTY

#### TECHNICAL LIGHTING ADVICE FOR PLACEMENT AND INSTALLATION

FOLLOW US:



See technical sheets for specific class certifications