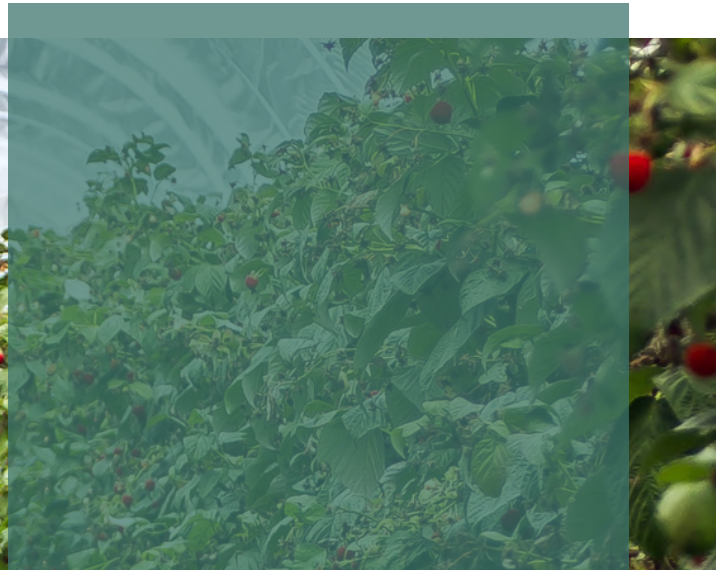


SC800 process computer

Our most supplied process computer



The Sercom SC800 is our most commonly supplied process computer and has a very compact construction. It has several control options and can be operated via LCD control as well as with a PC with SercoVision. The number of inputs and outputs for measurement and control signals can be custom-configured, so that you can control exactly those processes that are relevant to your situation.

The SC800 makes it possible to control both the climate and the irrigation, down to the smallest details. Because the SC800 has a modular construction, it can easily be expanded to up to 900 greenhouse compartments.

RS485 connection

The communication is via RS485 and with the development of the Wireless Xtender, the connection between the SC800 and the control PC as well as with the field stations can be carried out completely wirelessly within a radius of 5 kilometres.

In a nutshell:

- Suitable for 60 greenhouse compartments per SC800
- Up to 15x SC800 can be linked together
- Operation with PC, LCD and / or smartphone
- Lightning-proof communication
- Modular construction
- Option for wireless control of field stations



Internet of Things

With the ARM processor print, it is now also possible to connect the SC800 directly to the Internet of Things, so that software extensions can easily be added remotely. In addition, this print makes it possible to communicate with other systems within the network.

Unique control

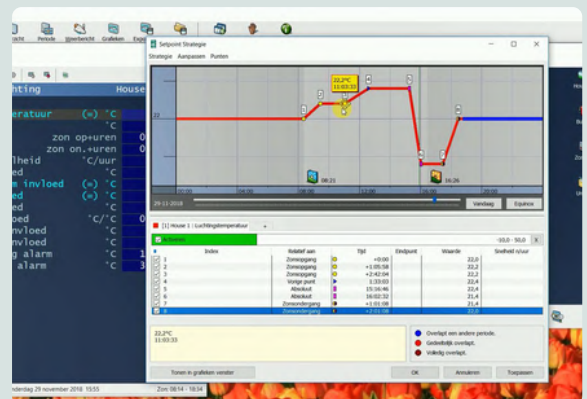
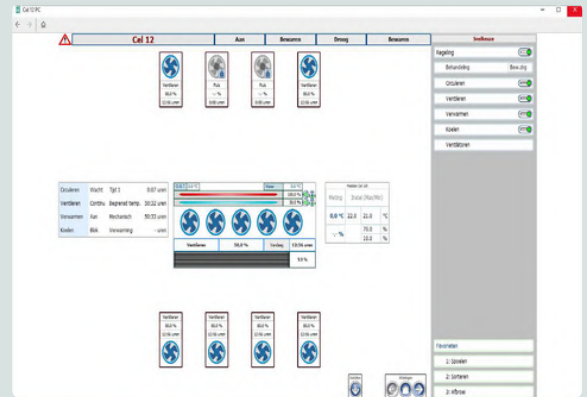
The precision and speed with which processes such as PAR light control, humidification control or screening can be controlled, is unique. With the Sercom process computer you get the best out of your greenhouse or storage cell.

Long lifespan

The SC800 will last a grower's life and is compatible with previous versions, even if they are decades old.

Additional information

More information about our SC800 process computer?
Please contact our sales department: sales@sercom.nl.



SERCOM