

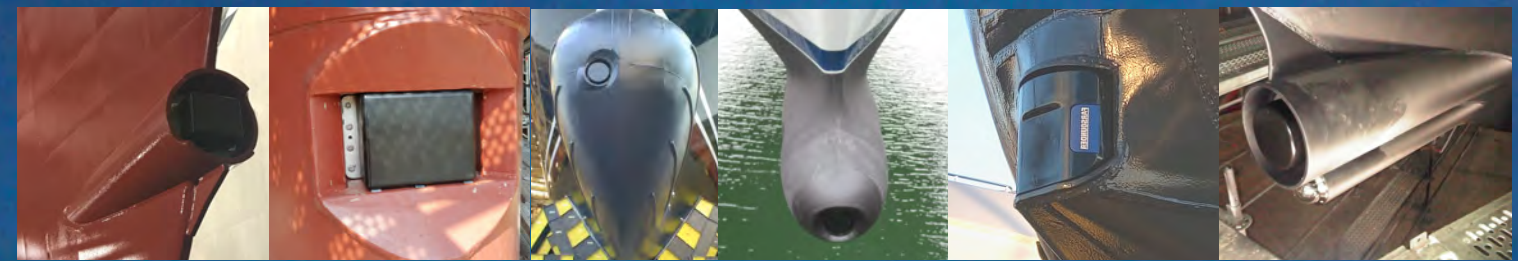


FARSOUNDER ARGOS

3D Forward Looking Navigation Sonar

ARGOS

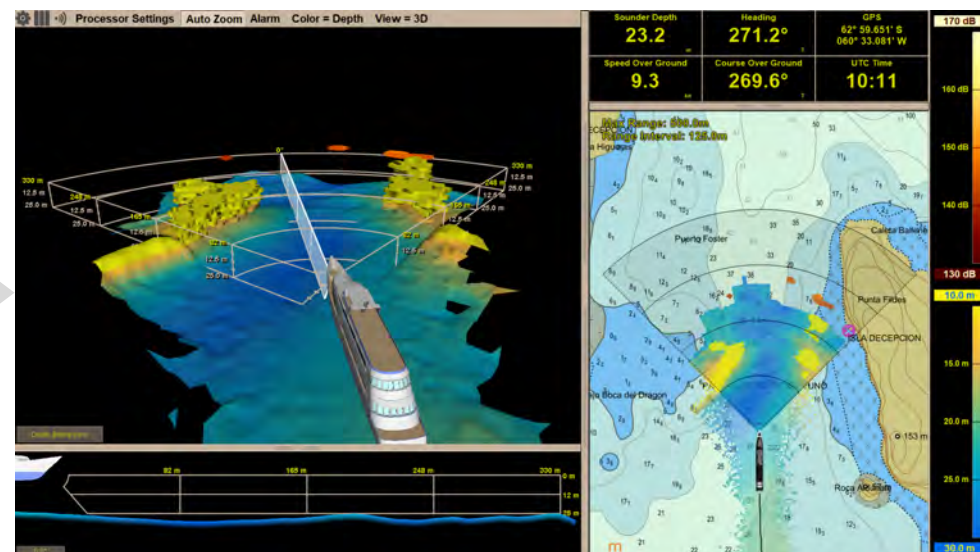
- Real-time 3D imagery at every ping
- Simple, fixed design easy to install
- Made with durable high-quality material
- Integratable software
- Safe for marine mammals



Innovative Navigation

Argos Forward Looking Sonar systems reliably detect shallows and various “in-water” targets including icebergs, coral reefs, and shipping containers at up to **1000 meters ahead in real-time**. Data is refreshed on every ping and is displayed in both the Chart View and 3D Omni View

Over the last **two decades**, FarSounder has been developing and deploying this **patented technology** around the world. Today, it continues to be the only forward-looking sonar system on the market that provides real-time 3D data out to **navigationally significant ranges**.



3D Omni View

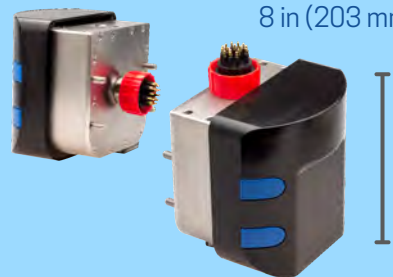
Chart View

Local History Mapping

An advanced, innovative software feature that georeferences collected data and maps it to where it is on a chart. This offers users the ability to **build a 3D map of the seafloor** updated with every ping. A single pass can map an expansive swath of the seafloor. This is displayed in the Chart View and in the 3D Omni View. The data is saved for future use and shown in both views when you return to a place you have recorded before.

Installation is easy with or without a bulb. It is a straightforward process for **refits and new builds**. Argos systems are designed to be suitable for many types of vessels.

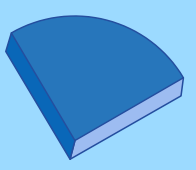
REAR OR TOP MOUNT AVAILABLE
8 in (203 mm)



6.4 in (162 mm)
Weight 29 lbs (13.5 kg)

ARGOS350

90° up to 350m range
Up to 18 Knots



10 in (254 mm)



10 in (254 mm)
Weight 72 lbs (32.6 kg)

ARGOS500

120° up to 200m range
90° up to 500m range
Up to 20 Knots



8 in (203mm)



9.75 in (248 mm)
Weight 78 lbs (35.3 kg)

ARGOS1000

120° up to 200m range
90° up to 500m range
60° up to 1000m range
Up to 25 Knots



System Specifications

Chart Support	S-57 and S-63
Real-time 3D Forward Looking Data	✓
3D Bathymetric History Data	✓
Bottom Mapping Range	8x Water Depth
Maximum Depth Detection	85m (280ft)
AIS Overlays	✓
ARPA Overlays	✓
User Defined Automated Alarms	✓
Roll/Pitch Stabilization	+/- 20°
Maximum Output Power	<1500 Wrms
Operating Frequency	61 kHz
Operating System	Windows 10
Angular Accuracy	~1.6°
Multi Ping Target Stabilization	✓
Integration into 3rd Party	Wärtsilä NACOS, Team Italia I-Bridge, QPS Qincy, Telemar T-Master Bridge, Böning Ship Automation
Power Requirements	110/220 Vac, 50/60 Hz Argos 1000~120W Argos 500~100W Argos 350 ~50W

Partnerships & Accolades

- NOAA Crowdsourced Bathymetry Trusted Node
- IHO Crowd-Sourced Bathymetry Working Group Member
- UNH Center for Coastal & Ocean Mapping Industrial Associate
- Tibbits Award Winner for Innovative Technology
- Recipient of US Dept of Homeland Security and Navy SBIR Grants
- Recipient of US Dept of Commerce ATP Grant
- Recipient of RI Innovation Grant
- More than 20 Years of Innovative Engineering

FARSOUNDER

151 Lavan Street,
Warwick RI 02888 USA
info@farsounder.com
+1.401.784.6700



FarSounder, Inc. 2022

"FarSounder", The FarSounder logo, "Argos 350",
"Argos 500", "Argos1000", Local History Mapping
are trademarks of FarSounder, Inc

All rights reserved.

Patents US7035166, US7123546, US7173879, US7355924,
US10502820, JN6444319, EP2956796B1
Other Patents Pending

www.FarSounder.com
Made in the USA