

MED APPROVED COMPASSES



Member of CISQ Federation



DECK MOUNT

6" : B6W2

5" : B6W5 - BW2 - BW4

4" : BU2 - BU4 - BU5 - BU7

3" : BZ3

2"3/4 : BA3

FLUSH MOUNT HORIZONTAL

6" : B6W3

5" : B6W1 - BW1 - BW3

4" : BU1 - BU3

3" : BZ1

2"3/4 : BA1

FLUSH MOUNT VERTICAL

4" BP2

3" BP1

BRACKET MOUNT

3" : BZ2

2" 3/4 : BA2



Riviera
GENOVA

Manufacturing marine solutions 100% Made in Italy

DECK MOUNT

B6W2

6"

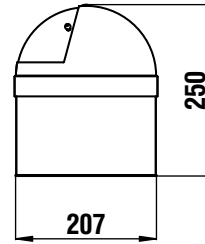


Gimbal type:	Internally gimbale
Lighting:	24V standard (12V on request)
Reading:	Rear - red lubber line
Card graduations:	5° - 2°
Apparent card dia:	6" - 150 mm

ORDER CODES

- 62.00133.01 Stainless steel 5° Black card
- 62.00134.01 Stainless steel 2° Black card

DM 586/200 included. MED certificate on request RINA certification approved, on request. The B6W6 compasses have the stainless steel cover included



Card graduations 2°

Card graduations 5°

B6W5

5"

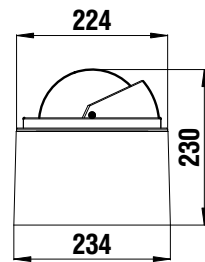


Gimbal type:	Internally gimbale
Lighting:	24V standard (12V on request)
Reading:	Rear - white lubber line
Card graduations:	5° - 2°
Apparent card dia:	6" - 150 mm

ORDER CODES

- 62.00084.01 Black 5° Black card - high speed
- 62.00083.01 Black 2° Black card - high speed
- 62.00076.01 Black 5° Black card
- 62.00075.01 Black 2° Black card

DM 586/200 included. MED certificate on request RINA certification approved, on request.



Card graduations 2°

Card graduations 5°

BW2

5"

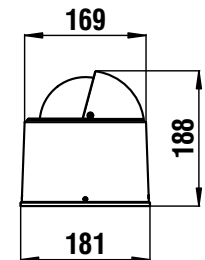


Gimbal type:	Internally gimbale
Lighting:	24V standard (12V on request)
Reading:	Rear - white lubber line
Card graduations:	5° - 2°
Apparent card dia:	5" - 130 mm

ORDER CODES

- 62.00021.01 Black 5° Black card - high speed
- 62.00021.10 Black 5° Red card - high speed
- 62.00023.01 Black 2° Black card - high speed
- 62.00025.01 Black 5° Black card
- 62.00027.01 Black 2° Black card

DM 587/200 included. MED certificate on request RINA certification approved, on request.



Card graduations 2°

Card graduations 5°

Card graduations 5°

BW4

5"

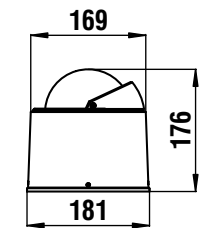


Gimbal type:	Internally gimbale
Lighting:	24 V standard (12V on request)
Reading:	Rear - red lubber line
Card graduations:	5° - 2°
Apparent card dia:	5" - 130 mm

ORDER CODES

- 62.00056.01 Black 5° Black card - high speed
- 62.00056.10 Black 2° Red card - high speed
- 62.00140.01 Black 2° Black card - high speed
- 62.00055.01 Black 5° Black card
- 62.00054.01 Black 2° Black card
- 62.00113.01 White 5° Black card
- 62.00141.01 White 2° Black card

DM 586/200 included. MED certificate on request RINA certification approved, on request.



Card graduations 2°

Card graduations 5°

Card graduations 5°

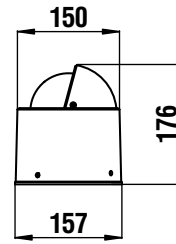
BU2**4"**

Gimbal type:	Internally gimbaled
Lighting:	12V standard (24V on request)
Reading:	Rear - red lubber line
Card graduations:	5° - 2°
Apparent card dia:	4" - 100 mm

ORDER CODES

- 62.00038.01 Black 5° Black card - high speed
- 62.00038.10 Black 5° Red card - high speed
- 62.00037.01 Black 5° Black card
- 62.00152.01 Black 2° Black card
- 62.00506.01 White 5° White card

DM 586/200 included. MED certificate on request RINA certification approved, on request.



Card graduations 5°

Card graduations 2°

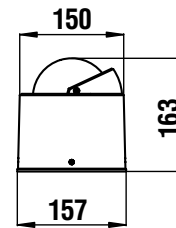
BU4**4"**

Gimbal type:	Internally gimbaled
Lighting:	12V standard (24V on request)
Reading:	Rear - red lubber line
Card graduations:	5° - 2°
Apparent card dia:	4" - 100 mm

ORDER CODES

- 62.00042.01 Black 5° Black card - high speed
- 62.00042.10 Black 5° Red card - high speed
- 62.00041.01 Black 5° Black card
- 62.00150.01 Black 2° Black card
- 62.00507.01 White 5° White card

DM 586/200 included. MED certificate on request RINA certification approved, on request.



Card graduations 5°

Card graduations 2°

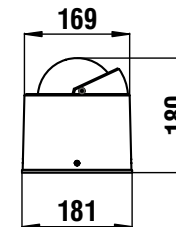
BU5**4"**

Gimbal type:	Internally gimbaled
Lighting:	12V standard (24V on request)
Reading:	Rear - red lubber line
Card graduations:	5° - 2°
Apparent card dia:	4" - 100 mm

ORDER CODES

- 62.00158.01 Black 5° Black card - high speed
- 62.00158.10 Black 5° Red card - high speed
- 62.00112.01 Black 5° Black card
- 62.00157.01 Black 2° Black card
- 62.00103.01 White 5° Black card

DM 586/200 included. MED certificate on request RINA certification approved, on request.



Card graduations 5°

Card graduations 2°

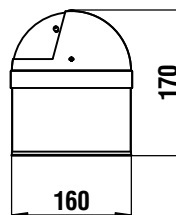
BU6-7**4"**

Gimbal type:	Internally gimbaled
Lighting:	LED 12V standard (LED 24V on request)
Reading:	Rear
Card graduations:	5°
Apparent card dia:	4" - 100 mm

ORDER CODES

- 62.00126.01 Stainless steel - 5° Black card - high speed - White lubber line BU6
- 62.00125.01 Stainless steel - 5° Black card - White lubber line BU6
- 62.00128.01 Stainless steel - 5° Black card - high speed - Red lubber line BU7
- 62.00127.01 Stainless steel - 5° Black card - Red lubber line BU7

DM 586/200 included. MED certificate on request RINA certification approved, on request.



Card graduations 5°

DECK MOUNT

BZ3

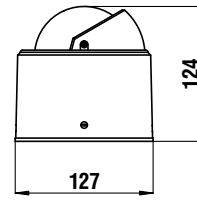
3"



Lighting:	12V standard (24V on request)
Reading:	Rear
Card graduations:	5°
Apparent card dia:	3" - 80 mm

ORDER CODES

- 62.00147.01 Black Black card - high speed
- 62.00148.01 Black Black card
- 62.00314.01 Grey Blue card - high speed
- 62.00315.01 Grey Blue card
- 62.00314.02 White Black card - high speed
- 62.00315.02 White Black card



DM 586/200 included. MED certificate on request RINA certification approved, on request.

BA3

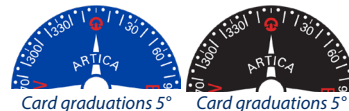
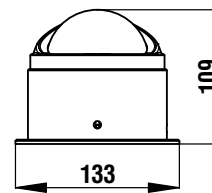
2" 3/4



Gimbal type:	Internally half gimbaled
Lighting:	12V standard (24V on request)
Reading:	Rear
Card graduations:	5°
Apparent card dia:	2" 3/4 - 70 mm

ORDER CODES

- 62.00116.01 Black Black card
- 62.00305.01 Grey Blue card
- 62.00305.02 White Black card



DM 586/200 included. MED certificate on request RINA certification approved, on request.



FLUSH MOUNT HORIZONTAL

B6W3

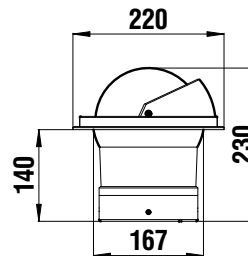
6"



Gimbal type:	Internally gimbaled
Lighting:	24V standard (12V on request)
Reading:	Rear - red lubber line
Card graduations:	5° - 2°
Apparent card dia:	6" - 150 mm

ORDER CODES

- 62.00100.01 Black 5° Black card - high speed
- 62.00099.01 Black 2° Black card - high speed
- 62.00078.01 Black 5° Black card
- 62.00077.01 Black 2° Black card



DM 586/200 included. MED certificate on request RINA certification approved, on request.

B6W1

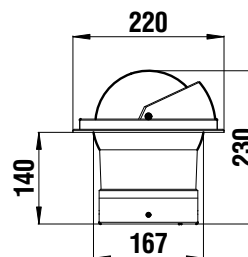
5"



Gimbal type:	Internally gimbaled
Lighting:	24V standard (12V on request)
Reading:	Rear - white lubber line
Card graduations:	5° - 2°
Apparent card dia:	6" - 150 mm

ORDER CODES

- 62.00082.01 Black 5° Black card - high speed
- 62.00081.01 Black 2° Black card - high speed
- 62.00074.01 Black 5° Black card
- 62.00073.01 Black 2° Black card



DM 586/200 included. MED certificate on request RINA certification approved, on request.

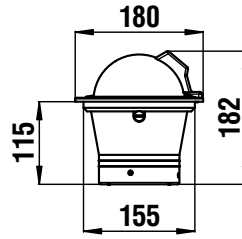
BW1**4"**

Gimbal type:	Internally gimbaled
Lighting:	24V standard (12V on request)
Reading:	Rear - white lubber line
Card graduations:	5° - 2°
Apparent card dia:	5" - 130 mm

ORDER CODES

- 62.00013.01 Black 5° Black card - high speed
- 62.00013.10 Black 2° Red card - high speed
- 62.00015.01 Black 2° Black card - high speed
- 62.00017.01 Black 5° Black card
- 62.00019.01 Black 2° Black card

DM 586/200 included. MED certificate on request RINA certification approved, on request.

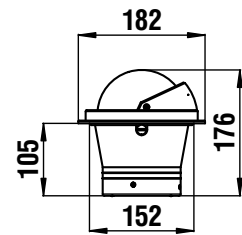
**BW3****5"**

Gimbal type:	Internally gimbaled
Lighting:	24V standard (12V on request)
Reading:	Rear - red lubber line
Card graduations:	5° - 2°
Apparent card dia:	5" - 130 mm

ORDER CODES without protective cover

- 62.00053.01 Black 5° Black card - high speed
- 62.00053.10 Black 5° Red card - high speed
- 62.00142.01 Black 2° Black card - high speed
- 62.00052.01 Black 5° Black card
- 62.00051.01 Black 2° Black card

DM 586/200 included. MED certificate on request RINA certification approved, on request.

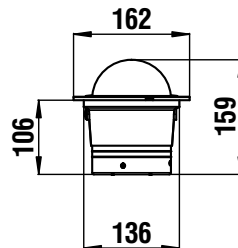
**BU1****4"**

Gimbal type:	Internally gimbaled
Lighting:	12V standard (24V on request)
Reading:	Rear - red lubber line
Card graduations:	5° - 2°
Apparent card dia:	4" - 100 mm

ORDER CODES

- 62.00036.01 Black 5° Black card - high speed
- 62.00036.10 Black 5° Red card - high speed
- 62.00035.01 Black 5° Black card
- 62.00151.01 Black 2° Black card
- 62.00318.01 White 5° White card

DM 586/200 included. MED certificate on request RINA certification approved, on request.

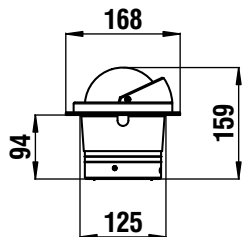
**BU3****4"**

Gimbal type:	Internally gimbaled
Lighting:	12V standard (24V on request)
Reading:	Rear - red lubber line
Card graduations:	5° - 2°
Apparent card dia:	4" - 100 mm

ORDER CODES

- 62.00040.01 Black 5° Black card - high speed
- 62.00040.10 Black 5° Red card - high speed
- 62.00039.01 Black 5° Black card
- 62.00153.01 Black 2° Black card
- 62.00321.01 White 5° Blue card - high speed

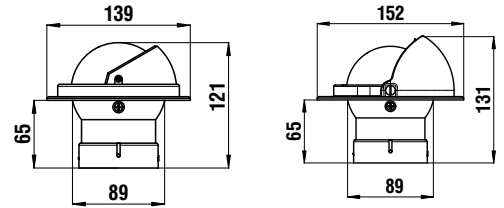
DM 586/200 included. MED certificate on request RINA certification approved, on request.



FLUSH MOUNT HORIZONTAL

BZ1
3"


Gimbal type:	Internally gimballed
Lighting:	12V standard (24V on request)
Reading:	Rear
Card graduations:	5°
Apparent card dia:	3" - 80 mm


ORDER CODES without protective cover

- 62.00144.01 Black Black card
- 62.00311.01 Grey Blue card
- 62.00311.02 White Black card
- 62.00143.01 Black Black card - high speed
- 62.00309.01 Grey Blue card - high speed
- 62.00309.02 White Black card - high speed

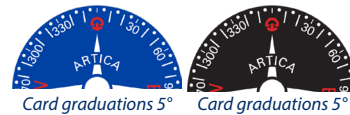
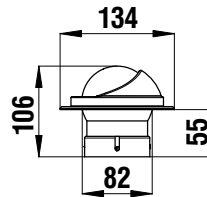
ORDER CODES without protective cover

- 62.00643.00 Black Black card
- 62.00643.02 Grey Blue card
- 62.00643.01 White Black card
- 62.00581.00 Black Black card - high speed
- 62.00581.02 Grey Blue card - high speed
- 62.00581.01 White Black card - high speed
- 62.00581.03 White Blue card - high speed

No approvals needed for navigation within 6 miles. MED certification on request. Black or blue card available. Anti-glare screen. Repairable. Built-in compensation.

BA1
2" 3/4


Gimbal type:	Internally half gimballed
Lighting:	12V standard 24V on request
Reading:	Rear
Card graduations:	5°
Apparent card dia:	2" 3/4 - 70 mm


ORDER CODES

- 62.00114.01 Nera Rosa nera / Black Black card
- 62.00301.01 Grigia Rosa blu / Grey Blue card
- 62.00301.02 Bianca Rosa nera / White Black card

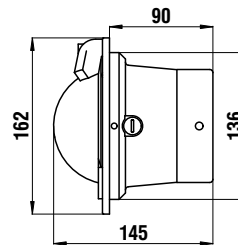
No approvals needed for navigation within 6 miles. MED certification on request. Black or blue card available. Anti-glare screen. Repairable. Built-in compensation.



FLUSH MOUNT VERTICAL

BP2
4"


Gimbal type:	Internally gimballed
Lighting:	LED 12V standard (LED 24V on request)
Reading:	Direct
Card graduations:	5°
Apparent card dia:	4" - 100 mm


ORDER CODES

- 62.00044.05 Black White card
- 62.00044.02 Black Black card
- 62.00044.03 Black Red card
- 62.00044.04 Black Blue card
- 62.00509.01 White White card
- 62.00509.02 White Black card
- 62.00509.03 White Red card
- 62.00509.04 White Blue card

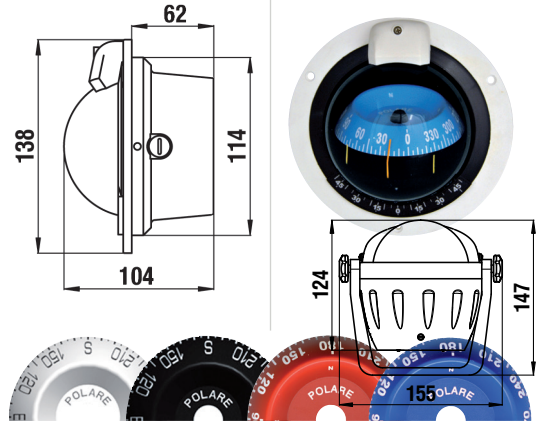
MED certification on request

BP1**4"**

Gimbal type:	Internally gimbaled
Lighting:	LED 12V standard (LED 24V on request)
Reading:	Direct
Card graduations:	5°
Apparent card dia:	3" - 80 mm

ORDER CODES

- 62.00043.05 Black White card
- 62.00043.02 Black Black card
- 62.00043.03 Black Red card
- 62.00043.04 Black Blue card
- 62.00508.01 White White card
- 62.00508.02 White Black card
- 62.00508.03 White Red card
- 62.00508.04 White Blue card



Card graduations 5°

MED certification on request

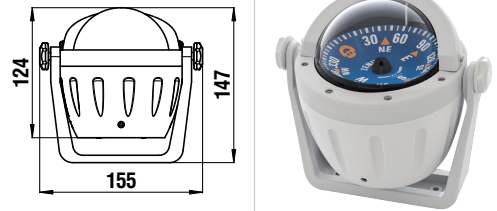
**BRACKET MOUNT****BZ2****3"**

Gimbal type:	Internally gimbaled
Lighting:	12V standard (24V on request)
Reading:	Rear
Card graduations:	5°
Apparent card dia:	3" - 80 mm

ORDER CODES

- 62.00145.01 Black Black card - high speed
- 62.00146.01 Black Black card
- 62.00312.01 Grey Blue card - high speed
- 62.00313.01 Grey Blue card
- 62.00312.02 White Black card - high speed
- 62.00313.02 White Black card

No approvals needed for navigation within 6 miles. MED certification on request. Black or blue card available. Anti-glare screen. Repairable. Built-in compensation. Canvas hood available.



Card graduations 5° Card graduations 5°

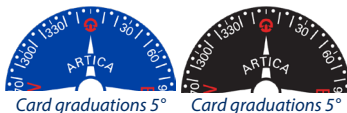
BA2**2" 3/4**

Gimbal type:	Internally half gimbaled
Lighting:	12V standard (24V on request)
Reading:	Rear
Card graduations:	5°
Apparent card dia:	2" 3/4 - 70 mm

ORDER CODES

- 62.00115.01 Black Black card
- 62.00304.01 Grey Blue card
- 62.00304.02 White Black card

No approvals needed for navigation within 6 miles. MED APPROVED COMPASSES on request. Black or blue card available. Anti-glare screen. Repairable. Built-in compensation.



Card graduations 5° Card graduations 5°



www.rivieragenova.it



Riviera Srl | 16138 Genova | tel. 010 8355286 | email: info@rivieragenova.it