



# OMPECO

Leader in Marine Environmental Protection



## CONVERTER SOLUTIONS FOR THE MARINE and OIL & GAS INDUSTRY

# OMPECO

# THE MOTHER COMPANY

**Officine  
Meccaniche  
Pejrani**



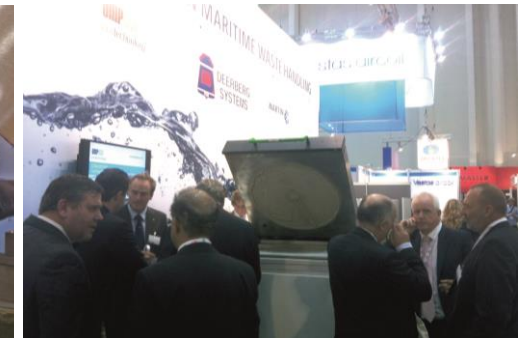
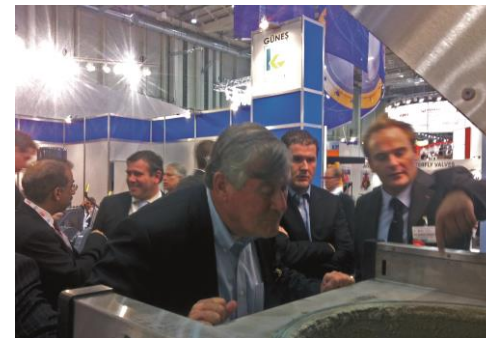
**Officine Meccaniche Pejrani Srl** is located in Vinovo, near

Turin, and operates in metal and environmental fields since 1973 .



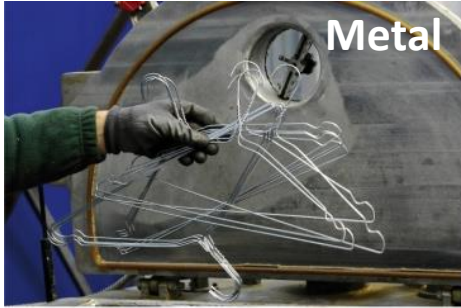
# CONVERTER<sup>®</sup> FACTS:

- **Waste Sterilizer**
- **Patented Technology**
- **Incinerator Alternative**
- **NO Combustion Process**
- **NO Flue Gas Emissions**
- **Treats all Types of Waste**
- **“24/7” Operation Possible**



**OMPeco Converter<sup>®</sup>**  
**Bulletpoint Facts**

**OMPeco**



Metal



Wood



Plastic Foils



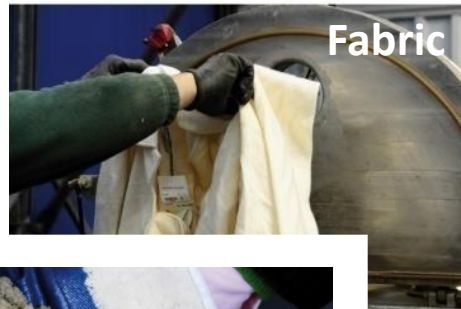
Food Waste



Glass



Hard-Plastic



Fabric



Carton



**Converter® Treatment  
Result  
Reduced Weight & Volume,  
Sterilized End-Product: Fluff!**



# OMPeco Converter® Waste Feeding & Treatment Result



## DIA - THE OMPECO CONVERTER® ....

---

- ... is modular and available in various sizes from 40 to 2400 kg/h
- ... is available in fully integrated or stand-alone solutions
- ... is RINA certified
- ... already won the METS DAME AWARD

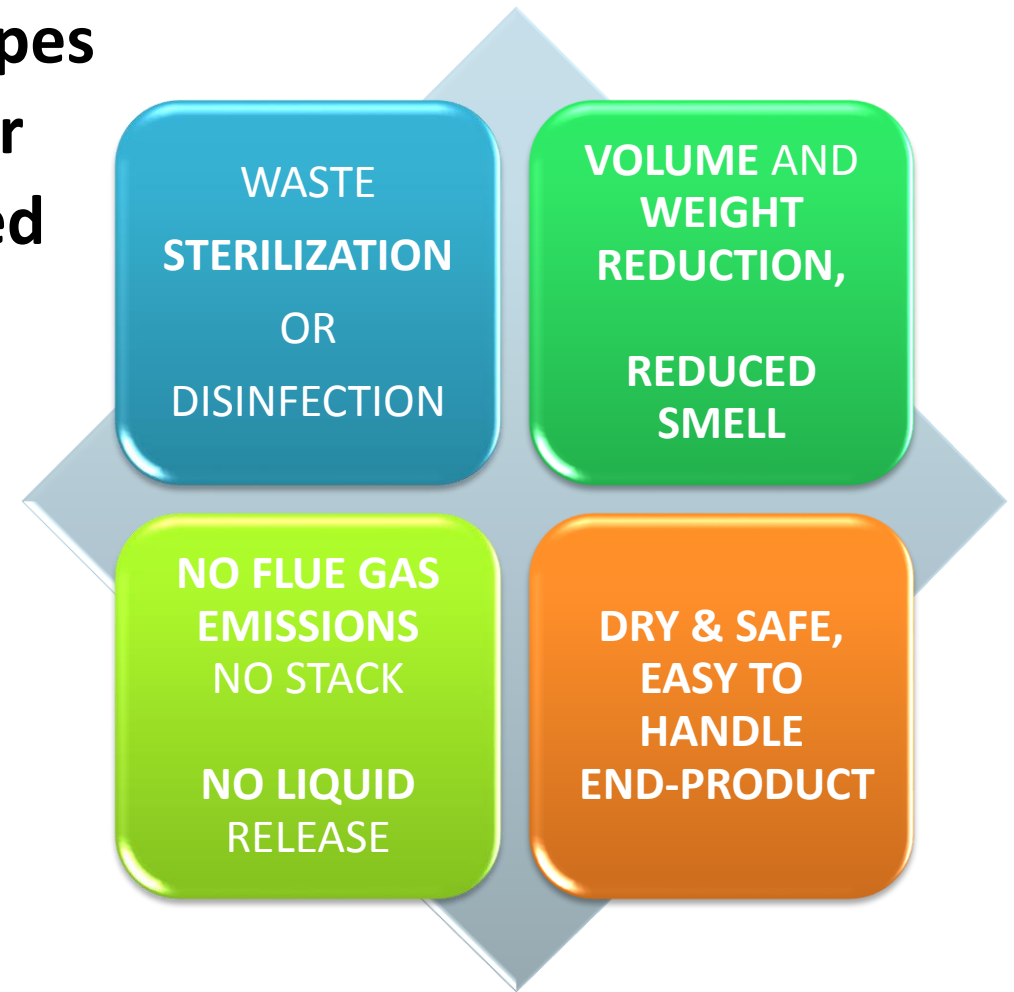
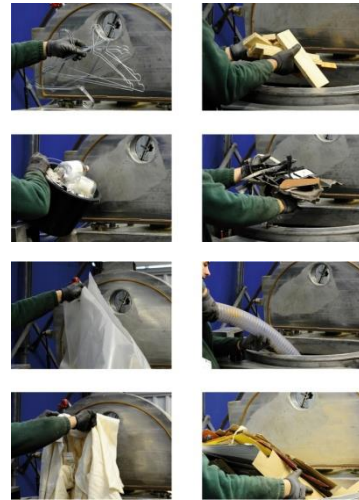
METS (Marine Equipment Trade Show) DAME (Design Award METS) is now recognised as the world's leading design competition for new marine equipment and accessories



# OMPeco Converter®

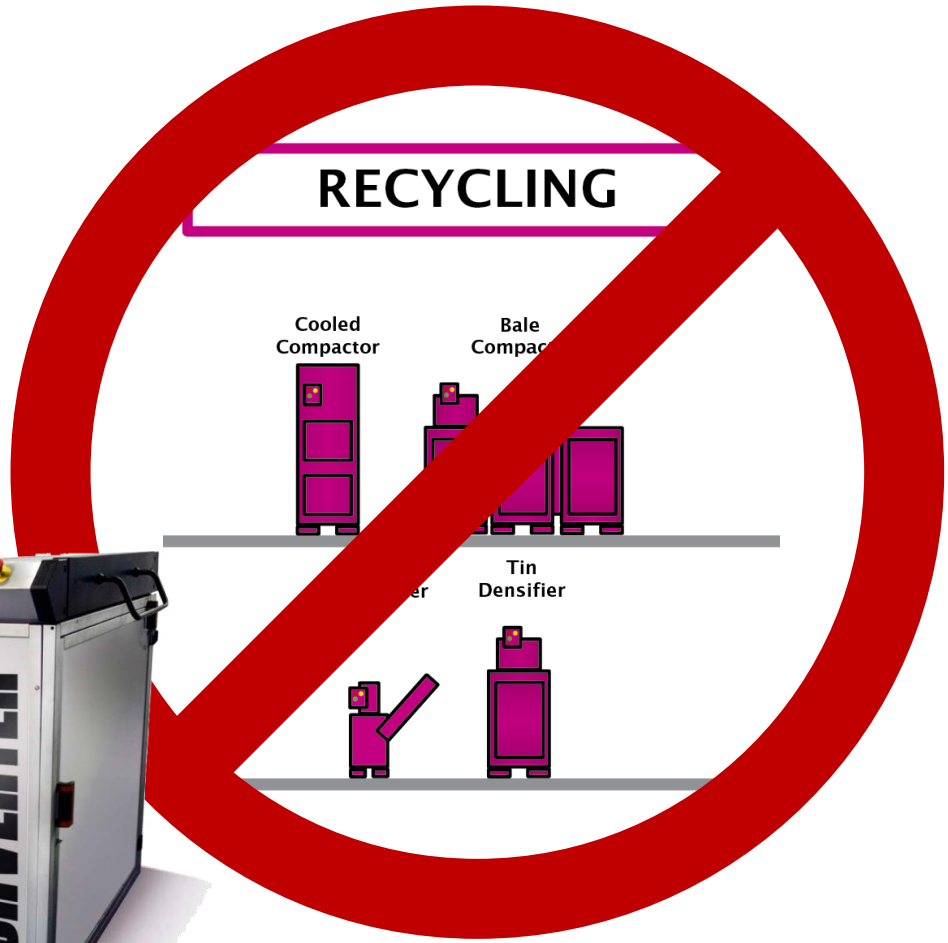
# OMPECO

**The Converter<sup>®</sup> can treat different types of waste both in one single process or one type at the time in case of needed segregation .**



**OMPeco Converter<sup>®</sup>  
Multiple Advantages**

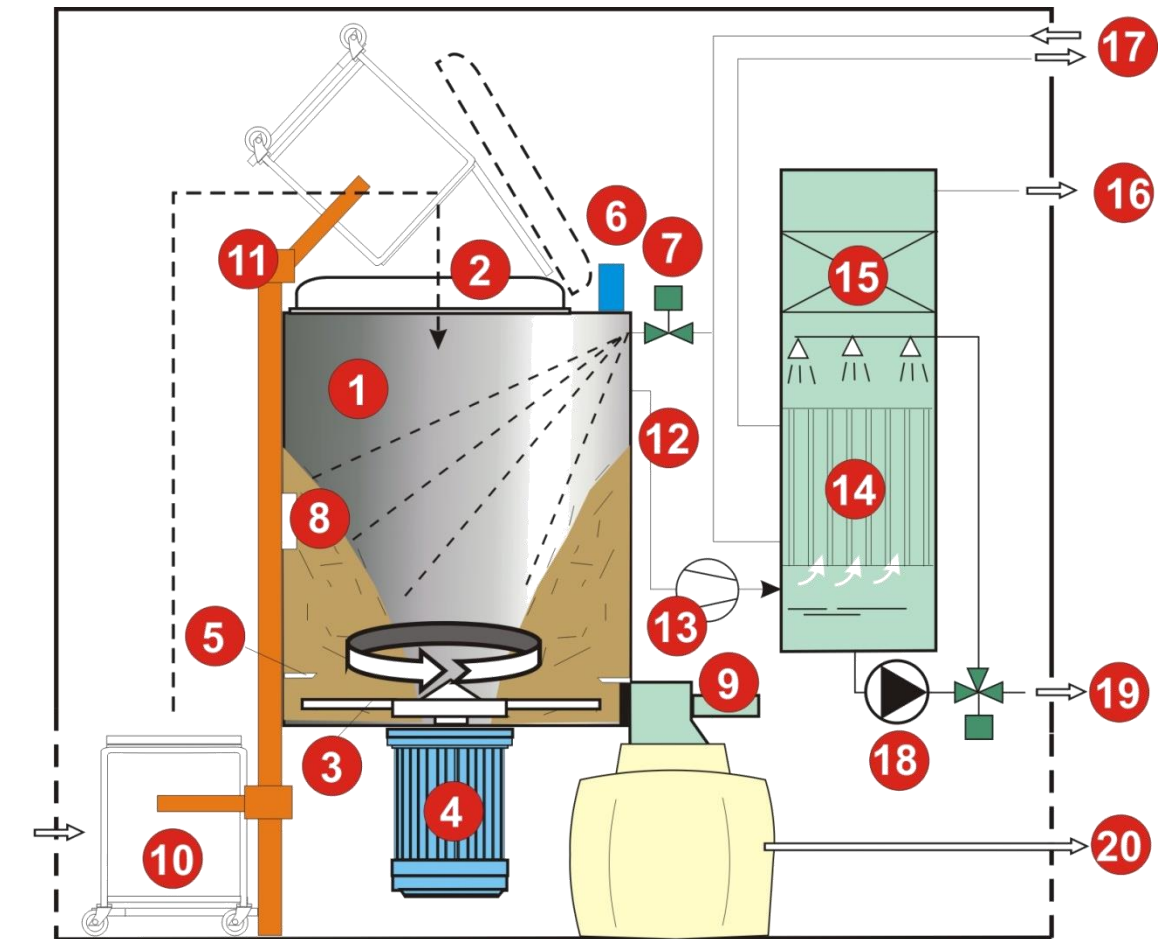




OMPeco Converter®  
Can Replace Several Equipments



1. Sterilization chamber
2. Lid
3. Rotor
4. Motor
5. Stationary blade
6. IR pyrometer
7. Valve for water injection
8. Pockets for protection of biologic control kits
9. Treated product way-out valve
10. Container with waste to be treated
11. Loader
12. Vapours outlet
13. Pumps for vapours extraction
14. Condenser
15. Filter assembly
16. Vent outlet
17. Water connections
18. Pump for condensed
19. Condensed outlet
20. Treated product outlet

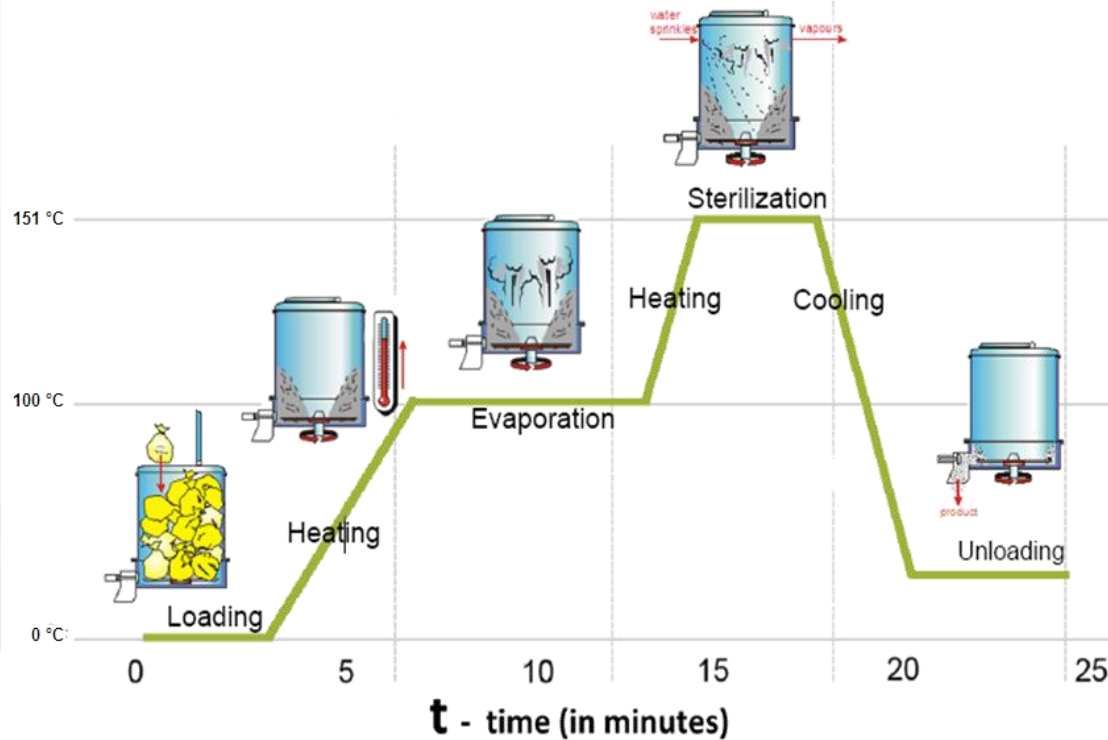
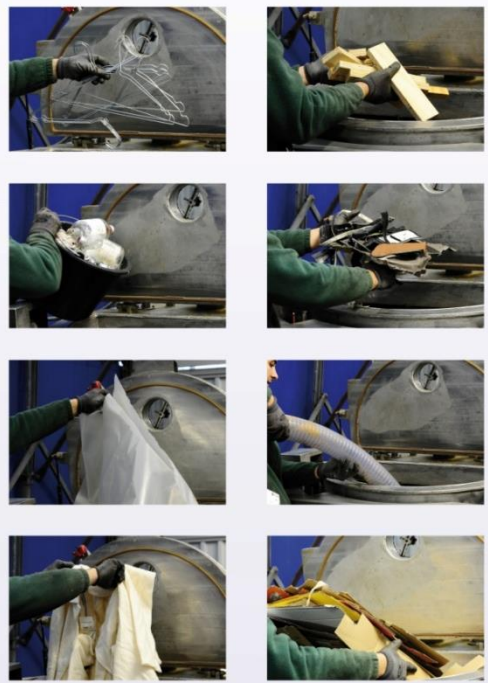


# OMPeco Converter® Components





## Loading of Converter<sup>®</sup>



Based on the average composition of the waste, the final product has a high caloric value (up to 7900 kCal/Kg) and can be incinerated or used for several other useful purposes.



# OMPeco Converter<sup>®</sup> Sterilization Process

# OMPeco

	NV 60	NV 100	NV 200	NV 1000	NV 2000	NV 5000
Capacity/hr Household Waste (40% Humidity)	30 kg/hr	60 kg/hr	90 kg/hr	360 kg/hr	720 kg/hr	1.600 kg/hr
Capacity/hr Organic Waste (70% Humidity)	20 kg/hr	40 kg/hr	50 kg/hr	200 kg/hr	400 kg/hr	1.000 kg/hr
Total Installed Power	45 kW	75 kW	90 kW	315 kW	700 kW	1.400 kW
Nominal Motor Power	30 kW	60 kW	75 kW	260 kW	600 kW	1.200 kW
Nominal Current	75 A	140 A	160 A	455 A	540 A	1.000 A
Machine Dimensions: <b>Length</b>	1.500 mm	1.850 mm	1.850 mm	4.000 mm	6.500 mm	7.500 mm
Machine Dimensions: <b>Width</b>	900 mm	1.000 mm	1.000 mm	2.000 mm	2.500 mm	3.000 mm
Machine Dimensions: <b>Height</b>	1.250 mm	1.300 mm	1.500 mm	4.000 mm	6.000 mm	7.000 mm
Dry Weight	1.250 kg	1.300 kg	1.700 kg	8.000 kg	16.000 kg	28.000 kg
Treatment Chamber Volume	100 ltr	180 ltr	210 ltr	1.000 ltr	2.000 ltr	5.000 ltr
Noise	80 dB	80 dB	80 dB	80 dB	80 dB	80 dB
Electricity Consumption	0,4-0,8 kW/kg	0,4-0,8 kW/kg	0,4-0,8 kW/kg	0,4-0,8 kW/kg	0,4-0,8 kW/kg	0,4-0,8 kW/kg
Water Consumption	600 ltr/hr	1.500 ltr/hr	2.000 ltr/hr	4.000 ltr/hr	8.000 ltr/hr	8.000 ltr/hr
Cooling Water Inlet/Outlet	1'	1'	1'	1'	1'	1'
Tap Water Inlet	½'	½'	½'	½'	½'	½'
Condensate Discharge	1'	1'	1'	1'	1'	1'

\* = Different percentage of humidity or different weight may cause a significant production increasing or reduction.

# OMPeco Converter®

## Available Sizes and Throughput





# OMPeco Converter<sup>®</sup> Large Applications



# COMPLETELY SAFE

**REDUCED  
VOLUME**

**REDUCED  
WEIGHT**

**CAN BE  
STORED FOR  
LONG PERIOD**



**DRY**

**REDUCED  
ODOR**

**HIGH  
CALORIFIC  
VALUE**

**OMPeco Converter®  
Sterilized End-Product**

**OMPeco**



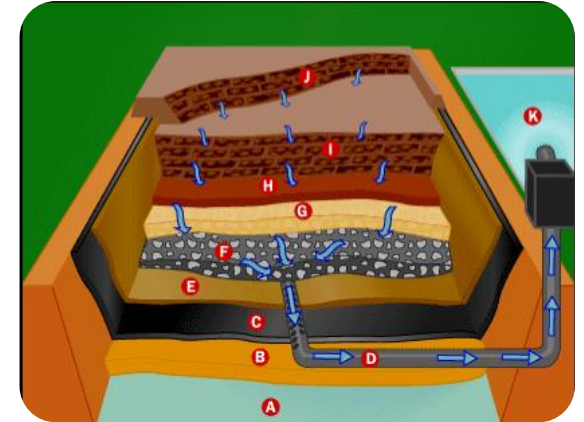
**INCINERATION SYSTEM**



**CEMENT  
FACTORY**



**WASTE TO  
ENERGY**



**LANDFILL**



**STERILIZED END-PRODUCT**

Based on the average composition of the waste, the final product has a high caloric value (up to 7900 kCal/Kg) and can be incinerated or used for several other useful purposes.

# OMPeco Converter® End-Product Use



# PRODUCT DEVELOPMENT



**H150**  
1993 - ITALY



**2000H**  
2009 - CANADA



**NV100**  
2010 - ITALIAN NAVY

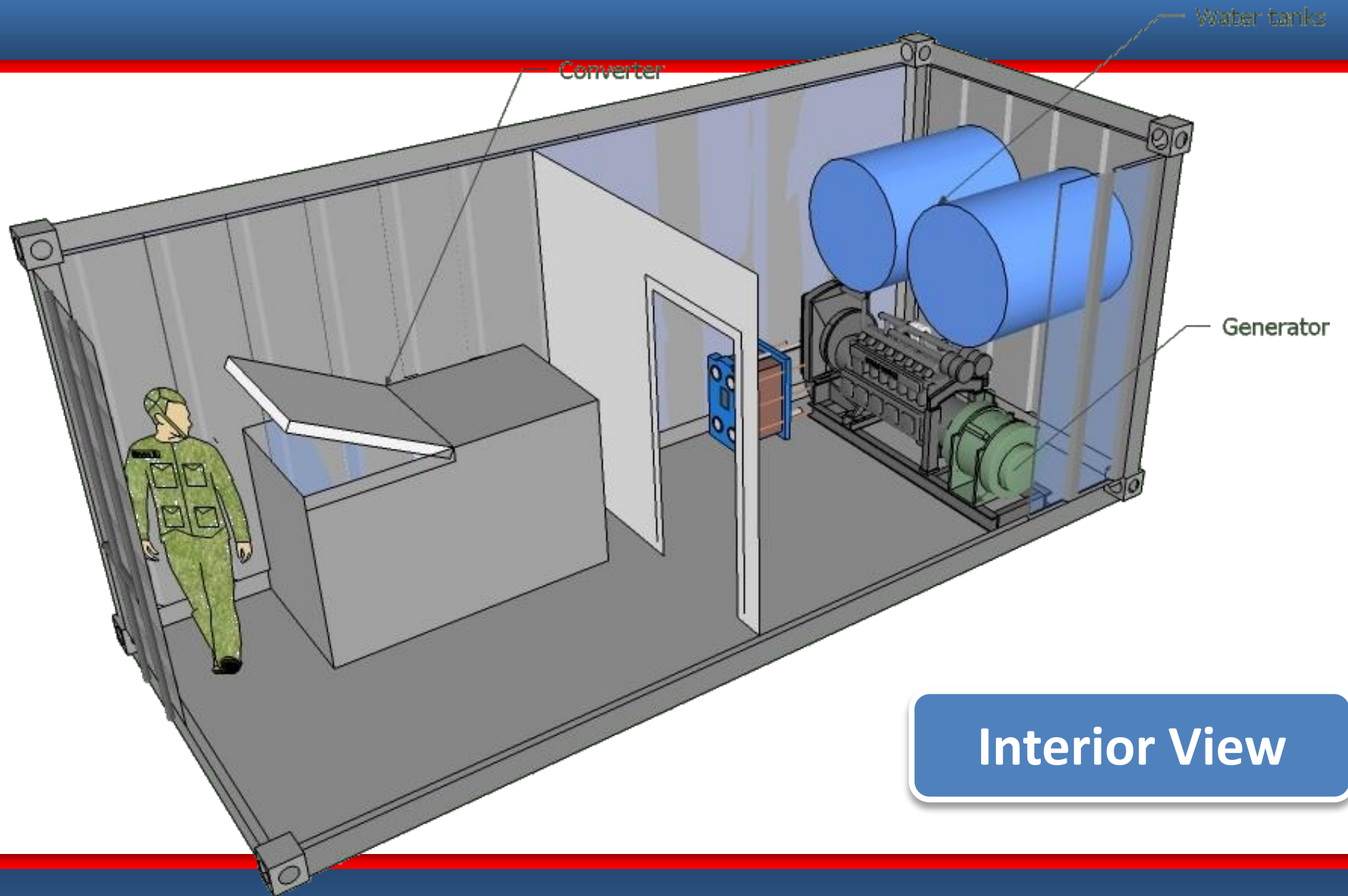


**5000H**  
2012 - ITALY



**200H**  
2011 - SPAIN

**OMP**ECO



Interior View

# OMPeco Converter<sup>®</sup> Containerized Solution



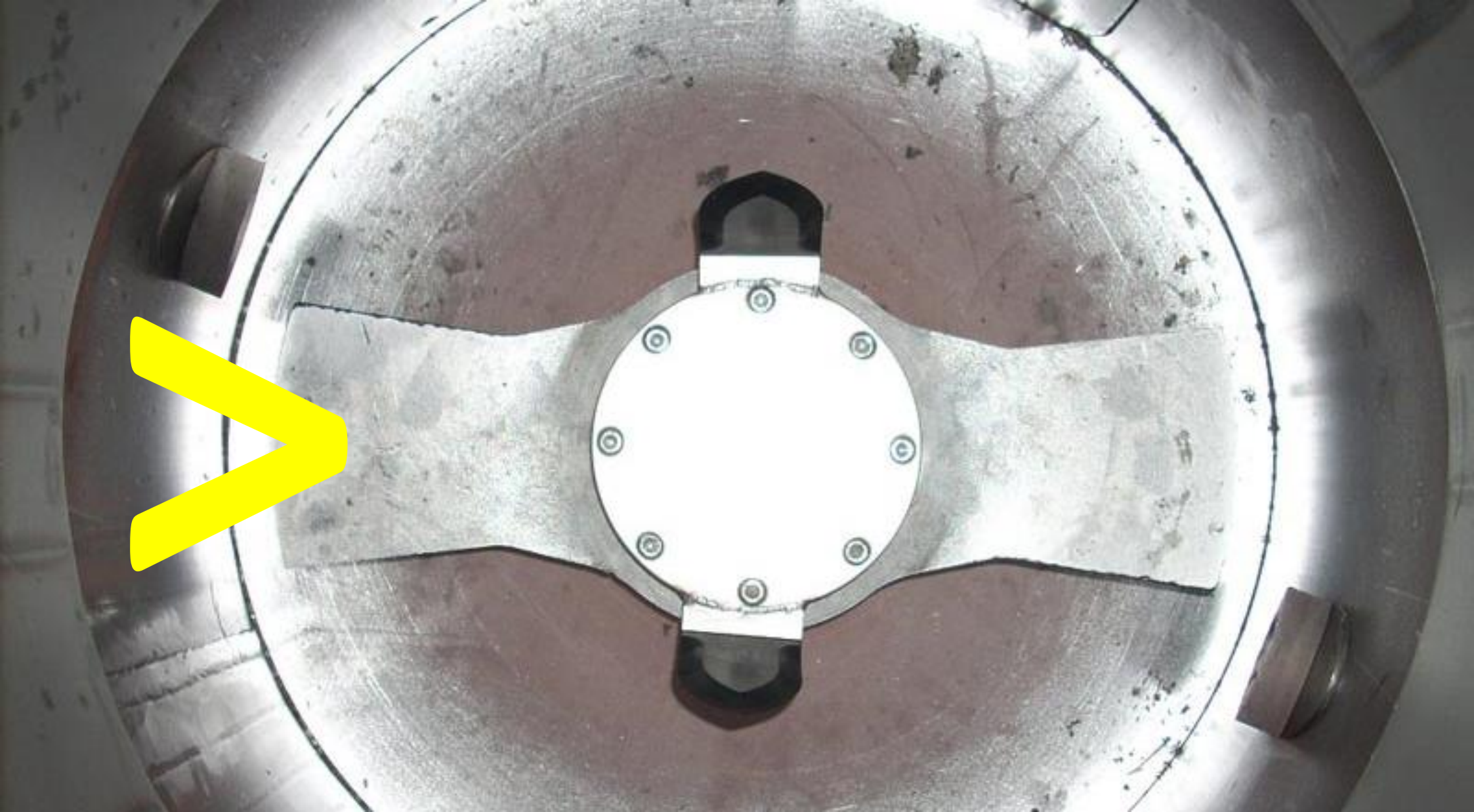
# PATENT AND CERTIFICATIONS

The Converter process is patented worldwide (EPO710125 and WO/1995/003072)

- **OMP is ISO14001, ISO13485 and ISO9001 certified.**
- Positive tests carried out by several public and private laboratories.
- UNI 10169:2001 and UNI EN 1384-1:2003 compliance
- **UNGM Supplier code: 153779**
- **FAO Supplier code: 57622**







**CONVERTER<sup>®</sup> - The New Waste  
Management Solution**

**OMP**ECO