



DHR80 LED

The all new DHR80LED is the latest addition to our range of LED Navigation lights. Now vessels with a length of over 50 meters can also be fitted with DHR LED Technology. With its modern, innovative and rugged design, the DHR80LED sets yet another standard in navigation lighting. The use of automotive LEDs and high quality components assures the most robust and durable product in its class. Interference noise does not occur and with a 50,000 hrs lifetime it reduces expensive maintenance costs to a minimum. On top of this, the DHR80LED is unique in its easy serviceability, which makes this lantern the best choice for safety in all weather conditions.


MATERIALS

- Black, hard anodised seawater resistant aluminium
- Polyamide base to prevent galvanic corrosion
- UV Resistant Borosilicate glass
- Epoxy potted powersupply for maximum protection
- Easy to replace LEDs and power supply









APPLICATION

Seagoing vessels with a length of over 50m

SPECIFICATION

Power Supply:	24V
Lifetime:	50,000 Hrs
Visibility:	3 NM - 6 NM
Operation Temperature:	-25 to 55 °C
Protection Class:	IP66
Approval:	MED  (pending)

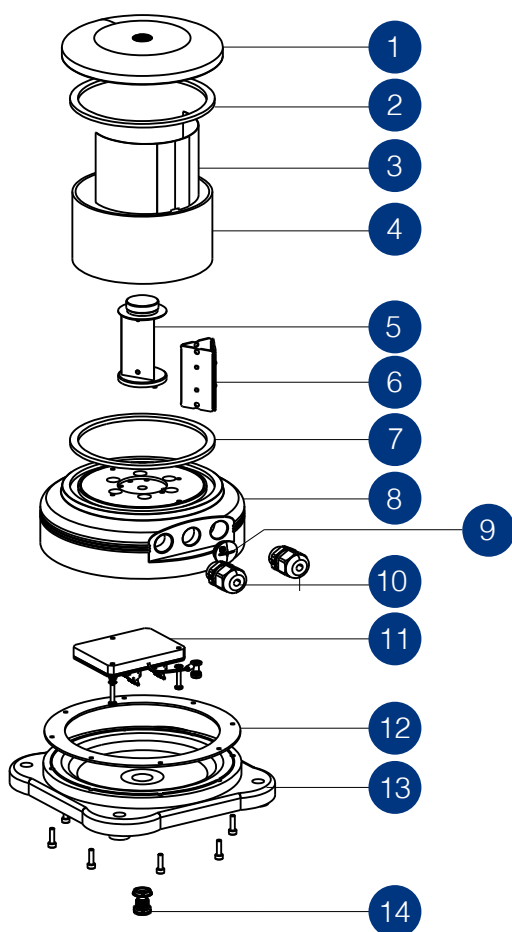
QUALITY STANDARDS

 Main and spare LED Modules	 No noise interference
 24VDC (-20%/+30%) Max. 20W	 +55°C -25°C Excellent thermal management
 Maintenance friendly	 Robust design
 +5 yrs Extended operational lifetime	 Waterproof IP66



AVAILABLE MODELS

Sector lights	Min. Visibility	LED Colour	Power	Art. Code
Starboard	3 NM	Green	3 W	80.01.00.00
Port light	3 NM	Red	4,5 W	80.02.00.00
Masthead	6 NM	White	16 W	80.03.00.00
Stern	3 NM	White	3 W	80.04.00.00
Towing	3 NM	Yellow	4,5 W	80.04.09.00
All-round lights	Min. Visibility	LED Colour	Power	Art. Code
White	3 NM	White	3 W	80.06.00.00
Manoeuvring	5 NM	White	10 W	80.06.10.00
Red	3 NM	Red	4,5 W	80.07.00.00
Green	3 NM	Green	3 W	80.08.00.00
Yellow	3 NM	Yellow	4,5 W	80.09.00.00
Blue	2 NM	Blue	3 W	80.10.00.00
Special sector lights	Min. Visibility	LED Colour	Power	Art. Code
Stern - Red (Suez light)	3 NM	Red	4,5 W	80.04.07.00
All-round lights, screended	Min. Visibility	LED Colour	Power	Art. Code
White	3 NM	White	3 W	80.06.01.80
Red	3 NM	Red	4,5 W	80.07.01.80
Green	3 NM	Green	3 W	80.08.01.80
Yellow	3 NM	Yellow	4,5 W	80.09.01.80



AVAILABLE PARTS

Item	Part	Partnumber
1	Cover	80.99.00.90
2	Gasket Ø91x4mm	80.99.00.51
3	Screen side lights	80.99.00.80
	Screen masthead	80.99.00.81
	Screen stern	80.99.00.82
	Screen 180°	80.99.00.83
4	Glass tube	80.99.00.52
5	Heatsink triangle (Sector /All-Round)	80.99.00.91
	Heatsink hexagon (Masthead)	80.99.00.92
6	MCPCB Starboard, All-Round Green	80.99.00.21
	Port, All-Round Red	80.99.00.22
	Masthead	80.99.00.23
	Stern, All-round White, Manoeuvring	80.99.00.24
	Towing, All-round Yellow	80.99.00.25
	All-Round Blue	80.99.00.26
7	Gasket Ø91x4mm	80.99.00.51
8	Hard Anodised Housing	
9	Plug M20x1.5	80.99.00.57
	Gasket 28x20x1,5	80.99.00.54
10	Cable gland M20x1.5	80.99.00.53
	Gasket 28x20x1,5	80.99.00.54
11	Power supply 350mA	80.99.00.11
	Power supply 500mA	80.99.00.12
	Power supply 700mA	80.99.00.13
	Power supply 1000mA	80.99.00.18
	Power supply Manoeuvring	80.99.00.17
12	Base plate gasket	80.99.00.55
13	Polyamide base plate	
14	Membrane Vent	80.99.00.58



Den Haan Rotterdam
 Fascinatio Boulevard 1182
 2909 VA Capelle a/d IJssel
 T +31 (0) 10 41 30 755
 E Sales@dhr.nl
www.dhrled.dhr.nl