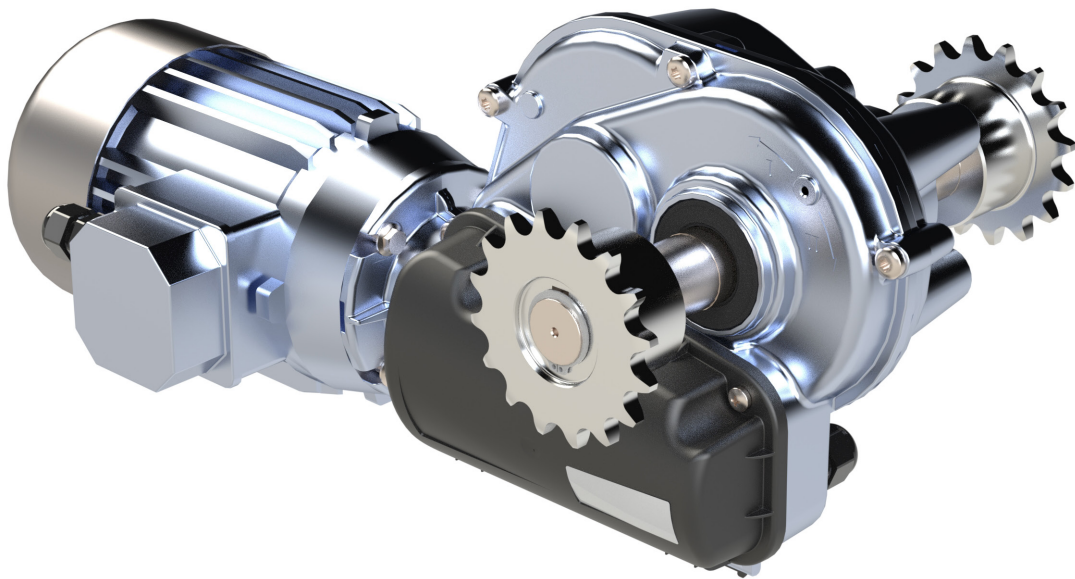


GWM motorgearbox

The leading economical geared motor
for poly greenhouse applications from
De Gier Drive Systems



DE GIER
DRIVESYSTEMS

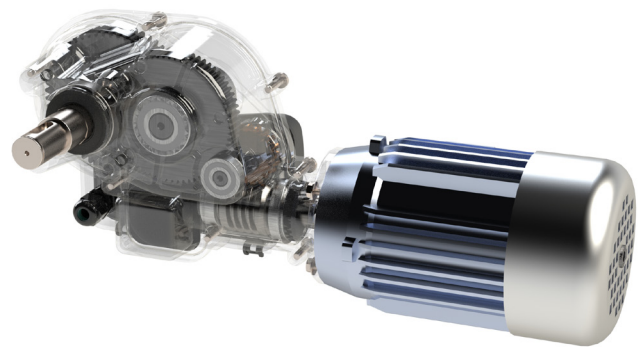
Let's gear up!

New and promising: the GWM

With the introduction of the new GWM gearmotor, De Gier Drive Systems strengthens its leading position. The GWM is a modular motor gearbox, specially developed for the polygreenhouse market for continuous ridge ventilation, sidewall ventilation and horizontal screening. As you would expect from De Gier Drive Systems, the GWM is made of very high-quality materials and has protection class IP55. The aluminium housing is both corrosion-resistant, maintenance-free and lightweight.

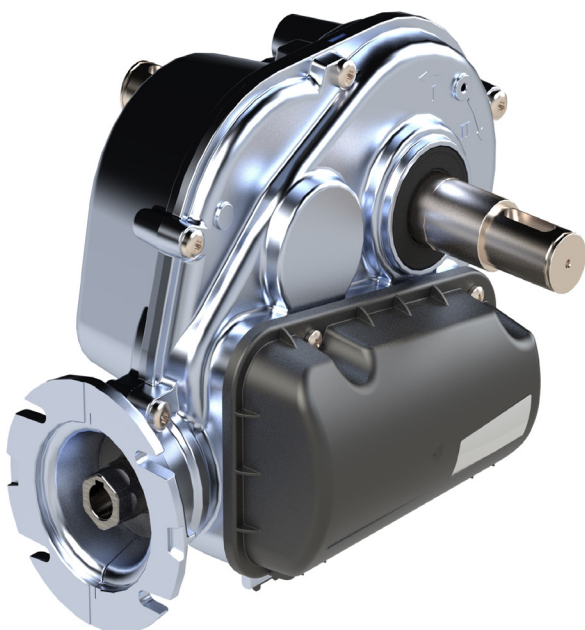
Three-stage drive

The gearbox is fitted with a low-noise three-stage gear and worm/worm-wheel combination. This transmission has been used successfully for years. A long service life is therefore guaranteed.



Installation and adjustments without motor or power

The GWM has a modular structure and consists of a gearbox unit and an electric motor. Fitting or exchanging the electric motor is simple. The input shaft of the gearbox has a hex connection. This allows limit switch adjustment anywhere at any time, even if there is no electricity available.

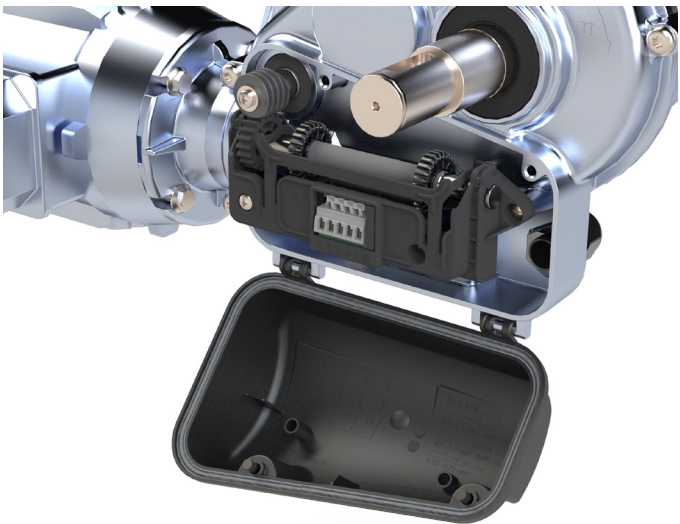


Oil-tight, limitless installation options

The GWM features an expansion chamber with a diaphragm. This eliminates the need for a vent plug allowing the motor to be mounted in any position. The high-quality seals and gaskets ensure an oil-tight motor gearbox.

User-friendly limit switch

An entirely new limit switch has been developed especially for the application, drawing on the years of technical experience of de Gier Drive Systems. The limit switch, which features an operating switch and an emergency stop is very easy to set. The unique design prevents failure of the limit switch in case of incorrect connection or setting. The plastic protective cap is secured with just two screws and stays on the gearbox by means of a hinge on the gear unit during adjustment. On the inside, the protective cover is fitted with connection instructions.

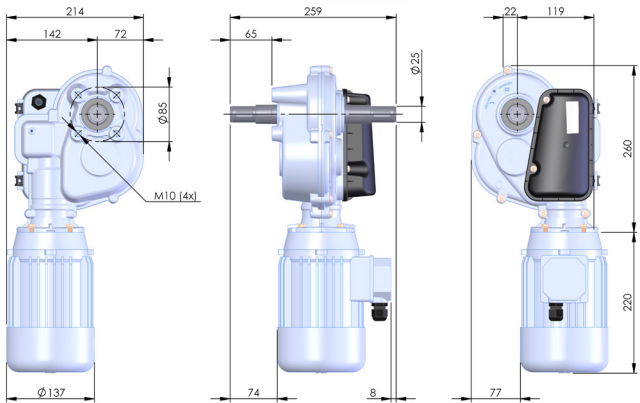


Sustainable packaging

Great care has also been taken in packaging the GWM. The engine can be transported and stored well-protected in the packaging, which is fitted with handles. The packaging is printed to increase recognisability. Naturally, only sustainable materials were used in the development sustainable materials.

The unique design prevents the limit switch from malfunctioning if improperly connection or setting.

Torque	RPM	Continuous Ridge & Side Ventilation	Horizontal Shading
300	2,6	•	-
450	2,6	•	-
150	5,2	-	•
300	5,2	-	•

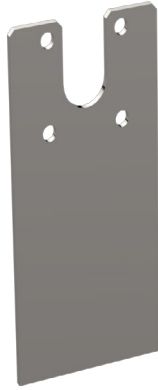


Article number	Torque	50 Hz				60 Hz				
		Speed	Power	Voltage	Current	Speed	Power	Voltage	Current	Mass
		T2 [Nm]	n [rpm]	P [kW]	U [V]	I [A]	n [rpm]	P [kW]	U [V]	I [A]
P.GWM15.1.400.52.K	150	5,2	0,25	230 / 400 (~3)	1,4 / 0,8	6,2	0,3	277 / 480 (~3)	1,4 / 0,8	14,3
P.GWM15.1.400.52.KW	150	5,2	0,25	230 / 400 (~3)	1,4 / 0,8	6,2	0,3	277 / 480 (~3)	1,4 / 0,8	16,6
P.GWM30.1.400.26.K	300	2,6	0,25	230 / 400 (~3)	1,4 / 0,8	3,1	0,3	277 / 480 (~3)	1,4 / 0,8	14,5
P.GWM30.1.400.26.KW	300	2,6	0,25	230 / 400 (~3)	1,4 / 0,8	3,1	0,3	277 / 480 (~3)	1,4 / 0,8	16,8
P.GWM30.1.400.52.K	300	5,2	0,37	230 / 400 (~3)	1,7 / 1,0	6,2	0,44	277 / 480 (~3)	1,7 / 1,0	14,7
P.GWM30.1.400.52.KW	300	5,2	0,37	230 / 400 (~3)	1,7 / 1,0	6,2	0,44	277 / 480 (~3)	1,7 / 1,0	17
P.GWM45.1.400.26.K	450	2,6	0,37	230 / 400 (~3)	1,7 / 1,0	3,1	0,44	277 / 480 (~3)	1,7 / 1,0	14,9
P.GWM45.1.400.26.KW	450	2,6	0,37	230 / 400 (~3)	1,7 / 1,0	3,1	0,44	277 / 480 (~3)	1,7 / 1,0	17,2

Variety in accessories

Various accessories have been developed for the GWM which are essential for optimum operation of this versatile gearmotor.

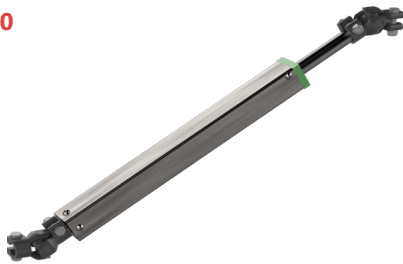
Mountingplate GW
P.MP.GWM.R.A000



Roller bracket
P.BL.R.GWM.01



Telescopic arm TSP40
P.TSP40.H0000



Coupling to tube
25x25x1,5
Ø32x1,5
P.KBS32.01.D25



De Gier Drive Systems is one of the world's leading companies in drive systems for international horticulture, intensive livestock farming, crop storage and non-residential facilities. Our systems are used in ventilation, screening and hoisting solutions in glass greenhouses, poultry sheds, storage facilities and other buildings. We work with our customers, partners and suppliers to develop innovative, sustainable and user-friendly solutions. We invest in long-term relationships and global partners. We actively contribute to our customers endeavours and we always provide a suitable solution. We do this based on mutual trust and flexibility.

