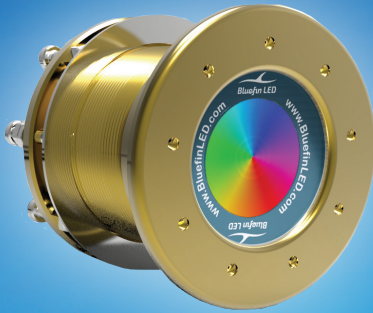




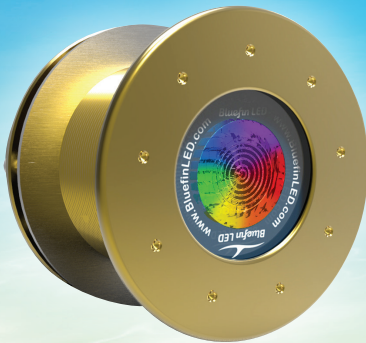
MAKO M12 & M24 CC





- Thru Hull Interchangeable.
- Unrivalled performance with almost unlimited mounting options thanks to the low profile bezel and compact body. Thru Hull fixing provides a safe & secure fixing with the added benefit of a removable LED cartridge that can be serviced or upgraded from inside the hull eliminating the need to haul the boat.
- M24 CC model has almost Endless Colour combinations to choose from, lights can be cycled, strobed, dimmed or beat to the sound of your music with our unique "sound to light feature" controlled via our I.Y.S control system for MFD/Mobile devices.
- Suitable for transom, side and under hull mounting on all hull types.

MAKO	M12	M24 CC
Colours:		
Boat Size:	up to 20m/65ft	up to 20m/65ft
Lumen Output:	6600	7800
Current:	12V 5.1A; 24V 2.6A	12V 5.1A; 24V 2.6A (external driver)

GREAT WHITE GW20 & GW48 CC



- Thru-hull Interchangeable.
- Top of the range Great White Underwater Lights offers almost unlimited mounting options thanks to a ultra low profile bezel and compact body.
- Thru Hull mounting offers secure fixing with the additional benefit of a removable LED cartridge which can be serviced from inside the hull, eliminating the need to haul.
- Suitable for Transom and side mounting on all hull types.
- GW48 CC model has almost Endless Colour combinations to choose from, lights can be cycled, strobed, dimmed or beat to the sound of your music with our unique "sound to light feature" controlled via our I.Y.S control system for MFD/Mobile devices.

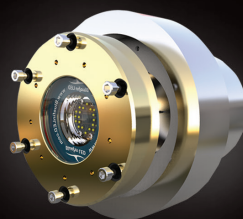
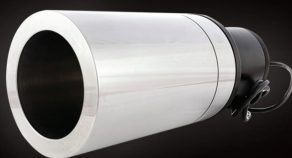
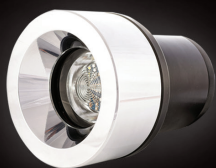
GREAT WHITE	GW20	GW48 CC
Colours:		
Boat Size:	up to 30m/105ft+	up to 30m/105ft+
Lumen Output:	15000	up to 13200
Current:	24V 5.1A	24V 6.5A (external driver)

SUPERYACHT ELITE

— SERIES —



- The Bluefin Elite Superyacht series boasts the highest fixture lumen light output currently available on the market.
- Variable angle 0-45 degree weld in section for either Steel or Aluminium hulls.
- Flush fit weld in section for either Steel or Aluminium hulls.
- The LED cartridge can be serviced or upgraded from inside the hull eliminating the need to haul the vessel.
- Available in White, Blue or RGBW Colour Change which can be controlled via our Intelligent Yacht System. Alternatively the lights can be integrated into the yachts existing DMX control system.
- Ice Class compatible.
- Fully customisable.
- Model also available for Fuel/Water tanks.



SUPERYACHT ELITE SERIES	SY48R-VA	SY48R-FF	SY48R-TL
Colours:			
Boat Size:	up to 30m/105ft+	up to 30m/105ft+	up to 30m/105ft+
Lumen Output:	26000	26000	26000
Current:	110V AC 2.3A / 240V AC 1.1A	110V AC 2.3A / 240V AC 1.1A	110V AC 2.3A / 240V AC 1.1A



For more information, give us a call on +44 (0) 1827 880450 or visit www.BluefinLED.com




Bluefin LED
Underwater Lighting

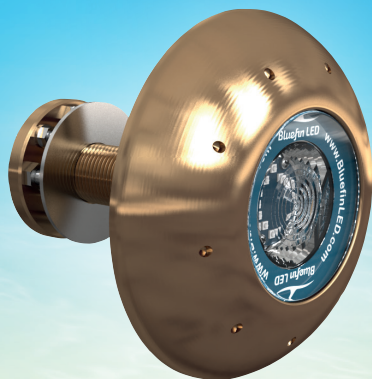
LIGHT UP A LIFETIME OF MEMORIES



ORCA OR20 & OR48 CC

- Surface mounted.
- The most powerful surface mounted Underwater LED lights available.
- 2 models to choose from, Single colour or RGBW Colour Change model with control via our I.Y.S control system for MFD/Mobile devices.
- A radical departure from conventional sealing methods the Orca has an unique rear cassette design with multiple sealing systems.
- Machined from Billet AB2 Marine grade Bronze.
- Suitable for Transom mounting on all hull types.
- Built in driver technology with active thermal rollback.

ORCA	O20	O48 CC
Colours:		
Boat Size:	up to 30m/105ft+	up to 30m/105ft+
Lumen Output:	15000	13200
Current:	24V 5.1A	24V 6.5A (external driver)



MANTA RAY MR20 & MR48 CC

- Thru-hull.
- Formidable performance with the added security of a thru-hull stem fitting.
- 2 models to choose from, Single colour or RGBW Colour Change model with control via our I.Y.S control system for MFD/Mobile devices.
- A radical departure from conventional sealing methods the Manta Ray has an unique rear cassette with multiple sealing system.
- Machined from Billet AB2 Marine grade Bronze.
- Suitable for Transom mounting on all hull types.
- Built in driver technology with active thermal rollback.

MANTA RAY	MR20	MR48 CC
Colours:		
Boat Size:	up to 30m/105ft+	up to 30m/105ft+
Lumen Output:	15000	13200
Current:	24V 5.1A	24V 6.5A (external driver)



PIRANHA

— SERIES —



PIRANHA P3 MK11

- Surface mounted.
- Class leading 1610 fixture lumens.
- Compact & low profile suitable for all hull types.
- Simple 2 wire installation, small cable entry hole.
- Internal driver with thermal trip.
- 60 degree beam.
- Aluminium option available.
- Control via Bluefin Switch or I.Y.S Control system for MFD/ Mobile device.

PIRANHA	P3 MK11
Colours:	 
Boat Size:	up to 7m/25ft
Lumen Output:	1610
Current:	12V 1.2A







PIRANHA P6 NITRO & P6 NITRO DUAL MK11

- Surface Mounted.
- Hi power low profile compact design.
- Built in driver technology with active thermal rollback.
- Suitable for in and out of water use.
- 60 degree beam.
- Aluminium option available.
- Class leading 3720 Fixture lumens
- Control via Bluefin Switch or I.Y.S Control system for MFD/Mobile device.

PIRANHA P6 CC MK11

- Surface Mounted.
- Almost infinite colour combinations available.
- Suitable for all types of boats, perfect for transom and side mounting on all hull types.
- Built in driver technology with active thermal rollback.
- Suitable for use in and out of water use.
- 60 degree beam.
- Aluminium option available.

PIRANHA	P6 NITRO MK11	P6 NITRO DUALMK11	P6 CC MK11
Colours:	 		
Boat Size:	14m/45ft	14m/45ft	up to 14m/45ft
Lumen Output:	3720	3720	4000
Current:	12V 3.5A; 24V 1.8A	12V 3.5A	24V 2.0A; 12V 4.0A



Manufactured
in the UK

PIRANHA P12 DUAL MK11

- Surface Mounted.
- Ultra powerful class leading 7250 Fixture Lumens.
- 2 models to choose from, single colour or Dual Colour.
- Ultra compact low profile design, suitable for transom and side mounting on all hull types.
- Simple installation just one small cable entry hole and 3 mounting screws.
- Built in driver technology with active thermal rollback.
- Suitable for in and out of water use.
- 60 degree beam.
- Aluminium option available.
- Control via Bluefin Switch or I.Y.S Control system for MFD/ Mobile device.



PIRANHA	P12 DUAL MK11
Colours:	
Boat Size:	up to 20m/65ft
Lumen Output:	7250
Current:	12V 4.6A; 24V 2.35A

HI-POWER

PIRANHA P24R, P24 DUAL, P24 CC



- Surface Mounted.
- Top of the range with an incredible 11,000 Fixture Lumens, nothing comes close to the power of the P24R.
- 3 models to choose from, single colour, Dual Colour or RGBW colour change.
- Ultra compact low profile design, suitable for transom and side mounting on all hull types.
- Simple installation just one small cable entry hole and 3 mounting screws.
- Built in driver technology with active thermal rollback.
- Suitable for in and out of water use.
- Control via Bluefin Switch or I.Y.S Control system for MFD/Mobile device.

PIRANHA	P24R	P24 DUAL	P24 CC
Colours:			
Boat Size:	30m/105ft	30m/105ft	30m/105ft
Lumen Output:	11000	11000	10000
Current:	12V 10.0A; 24V 5.0A	12V 10.0A; 24V 5.0A	12V 10.0A; 24V 5.0A

PATHWAY / DECK LIGHTS

- All 316L Polished Stainless Steel patented construction IP66 Protection.
- 600 Lumen Flat beam output.
- Available in most colour combinations to suit the installation.
- Voltage 12v AC/DC.
- Compact Design 100 x 19mm.



PATHWAY LIGHTS

Colours:



Lumen Output:

600

Current:

12V 500Ma

DOCK LIGHTING

- High impact Optical grade Polymer lens with AB2 Bronze base and polymer puck.
- 3720 / 7250 Fixture Lumens with 60 Degree beam angle.
- Various colours available White, Blue, Green or RGBW.
- Voltage 24v.
- Fully protected with over voltage/current, Reverse polarity, Thermal protection and soft start.
- Factory fitted 7mtr power lead and installation kit.
- Control via Bluefin Switch or I.Y.S Control system for MFD/Mobile device.



DOCK LIGHTS

Colours:



Lumen Output:

3720



4000



7250

Current:

24V 1.0A

24V 2.0A

24V 2.35A

FIREFLY FLOODLIGHTS

- All 316L Polished Stainless Steel patented construction IP66 Protection.
- Powerful 1000 Lumen 95 Degree Beam Angle.
- Voltage 9 - 32v.
- Compact design 120 x 55 x 19mm.
- Control via Bluefin Switch or I.Y.S Control system for MFD/Mobile device.



FIREFLY LIGHTS

Colours:

Lumen Output:

Current:

FB BRACKET, FR FLUSH, FF SURFACE



1000

12V 1A; 24V 500Ma

BLUEFIN LED ON/OFF SWITCH

Compatible with all Signature Series and Piranha Series single-colour lights and also compatible with Piranha Dual Colour and Colour Change models.

The perfect solution for simple use of your underwater lighting.



WIFI DMX CONTROLLER

Compatible with all Signature Series Colour Change models, select the desired colour, brightness via the glass touch-pad and colour wheel. Built-in WiFi connection enables you to connect directly from your iPhone/Android or tablet. Our unique "sound to light feature" enables lights to beat to the sound of the music. Use Strobe feature to flash your lights to attract fish or for safety panic mode.



COLOUR CONTROLLERS

Current:

BLUEFIN SWITCH

12/24V DC

Compatible with all Signature Series and Piranha Series single-colour lights and also compatible with Piranha Dual Colour and Colour Change models.

WIFI DMX

12/24V DC

Compatible with all CC models except Piranha CC