

Integrated solutions

for safety, security, building and energy management



Get to know Entelec Control Systems

Entelec is a software company specialised in the development and deployment of centralised management software. With the philosophy « Innovation in Integration », Entelec created the Sky-Walker Integration Platform.

Backed by more than 20 years of experience, we have established an extensive expertise in offering customer-focused solutions. We use this experience to assess and prioritise customer's requirements as well as to identify problems and shortcomings to build a solution that meets their specific needs & wants perfectly.



Engineering

We know the world of integration solutions. With us, you have access to knowledge based on multiple successful deployments in every possible sector. After all, we've been at it for more than 20 years.

Choose to work with Entelec, and an entire team of engineers is dedicated to helping you reach the best possible design & build based on your needs and requirements.



Maintenance & support

Minimise business risks with Entelec's maintenance & support possibilities. Our engineering team offers expert support based on your unique project information and requirements.

Get the most out of your product investment. The program facilitates fast response times for your business critical issues, including 24/7 support coverage and update licenses.



Training

Entelec's in-depth training programs include extensive hands-on time with the Sky-Walker Integration Platform and is designed to endow the attendees with the knowledge necessary to manage, configure and operate the product.

After every technical training course, attendants are evaluated and only receive the official certification after positive evaluation.

Originally, we started off as an engineering company for HVAC installations. As various control and security systems within buildings became more diverse and complex, we soon realized the industry's need for one unique and graphical interface to manage entire infrastructures on multiple sites. After a few years, we created our own research & development department to align developments with existing and future industry requirements.

To get a better feeling with the foreign markets, Entelec started founding local companies. Currently we are based in Belgium (Diepenbeek), United Kingdom (Birmingham), the Netherlands (Amersfoort) and France (Paris). Each company has its own dedicated sales and engineering team to ensure an optimal service towards their local customers, with support from the headquarters in Belgium. This enables us to provide global integration solutions, with local proximity and service, while maintaining a standardized and cost-efficient approach.

Sky-Walker Integration Platform

So how does the platform work exactly?

By bringing all of your different technologies under the Entelec umbrella and by providing a central monitoring location for all of these systems through the Sky-Walker Integration Platform, you benefit from a set of capabilities which guarantee top-level intelligence at all times:

- **Collect data** coming from any type and number of security devices
- **Analyse and identify** alarms & events and their priority
- **Verify** the situation with the relevant information provided by the platform
- **Resolve** with the help of step-by-step workflows, tailored for that specific situation
- **Reports and statistics** allow logging, tracking and in-depth analysis
- **Control remotely** over a secure network

Optimize your effectivity, improve your efficiency, and boost your return on investment!

Software architecture

The platform has a **service oriented architecture**, which means that the software is built up out of services designed to run 24/7 in the background. These services are generic, modular and accessible for multiple clients. They work autonomously without user interaction and are independent of user logon, giving you more flexibility in virtual environments.

The core of the software is the central database, containing all project related information.

Hardware architecture

The system is built in a modular way and can run on one single PC or connected to a network following the client/server model. Different devices communicate with each other through the ethernet using the TCP/IP protocol. Our software encrypts the data using a secured encryption algorithm.

Possible configurations are:

- Stand-alone
- Client server with one server
- Client server with multiple servers

System loaders

Every system uses a different communication protocol to communicate. Entelec therefore creates driver modules which translate your system's messages to Sky-Walker and vice versa. The system loader processes all of the alarms and events from the connected systems, resulting in a live visualisation of the current states.

Graphical user interface

Our software is the interface between your operators and your connected subsystems: user-friendly, intuitive and configured as desired.



Operational

Your operators use the client software to visualise, monitor and control the connected subsystems. They are able to navigate between buildings, send control commands, call alarm buffers, generate reports, add users, and so much more in the blink of an eye.

Configurational

Explore the benefits of being able to configure your project in an open and modular environment. Use the configuration client to setup your project and add or modify system functionalities such as users, floor plans, objects, procedures, etc.

Define user access rights within your projects

Create intuitive user profiles and make sure the right person has access to the right data at the right time from the right location. How to define these rights? You decide who is qualified to receive access to which (parts of) geographical locations, technologies or systems, administrator functionalities and workstations.

Enable continuity at any time. When a user logs off, make sure his shift is followed up automatically. And with a connection to an LDAP server, increased security around the user login and access levels is guaranteed.



Personalise your project with Sky-Walker libraries

Organise system object types once and reuse behaviours on demand. From the Sky-Walker library, you efficiently appoint functional and visual information to standard system object types such as analogue & digital inputs and outputs.

Video management - the whole is more than the sum of its parts

Experience a user-friendly video security solution that is flexible, interactive and that integrates any third party CCTV system.

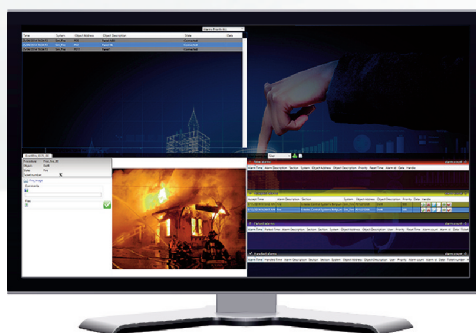
Our video management tool allows the display and control of CCTV equipment by building its own virtual matrix. Use cameras, sequences and salvos simply and efficiently. Working with different programs to control your cameras is no longer an issue.

Customise your layout

What will your interface look like? By positioning different viewers using the layouting feature, you appoint fixed locations to items such as floor plans, navigation, etc.

Alarm management & workflows

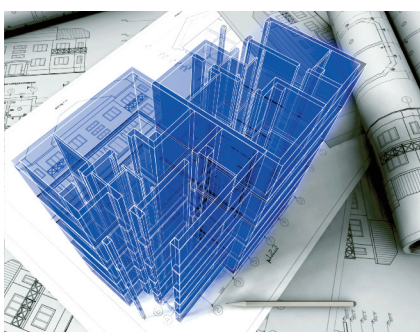
Simplify your operators' tasks and enable them to be on top of the situation at all times. Our workflow manager delivers the relevant information and tasks to the right person at the moment it is required. No more delays, but a set of clearly defined steps, customized to your situation.



And these are just a few of the possibilities. Experience a live demonstration and discover the new generation of system integration solutions. Check the last page of this booklet for an office nearby you and contact us today!

Today's buildings are equipped with a variety of systems, such as fire prevention, CCTV or alarm handling. But what about the management of all these technologies? The variety and possibilities are endless. It takes a lot of time to handle every system separately while visibility, effectiveness, reporting and early detection of problems are a few of the absolute musts for businesses all around the world.

That's why the Sky-Walker Integration Platform integrates all of the technical, safety and security systems within your buildings, from whichever brand or supplier, into one intuitive management solution.



Close the gap between your
safety, security and building
management

No supplier lock-in

Working with Entelec, you have the freedom of choice to integrate the best of breed intelligent technologies. Why not work with what you already have? Sky-Walker works manufacturer independently, so you are able to integrate your already present hardware and avoid investing in new systems. Go for efficiency at its best!

Open and future proof

With Sky-Walker, all of your systems work autonomously. The programming of different subsystems happens through software delivered by each individual supplier of that subsystem.

Reduce costs

Operator knowledge of only one software package is required, thus reducing training time & cost. And since all of your data is stored into one solution, there's no need for your operators to assemble facts and statistics manually.

Remote monitoring & control

Manage any number of sites centrally with minimal effort. Enable your service teams to troubleshoot problems, handle events, perform proactive maintenance, assist with user operations and monitor performance from one central dispatching or from various other locations.

Minimise faults and risks

Reduce maintenance costs and misunderstandings to an absolute minimum. Ensure correct handling with predefined procedures and operate in a uniform way.

App for guards on the go

Allow your guards and technicians to monitor and control while in motion on site or remotely using the Sky-Walker app. The possibilities are infinite with this application for Apple iPad and other future tablet platforms.

Data mining

Go beyond logging and reporting. Real-time dashboards and other custom forms of measurement are the key to your cost savings.



References

At Entelec, we realise that not all businesses are alike. That's why we focus on your specific needs and build our system integrated solution around them. Goal: Keeping your assets, staff and/or clientele harm free & protected while at the same time reducing costs, improving reliability and boosting effectiveness.

Retail

Next to day-to-day management, retailers need to tackle issues such as shoplifting, robberies, loss prevention and crowd management – while not losing sight of creating and maintaining a more pleasant shopping experience for clientele every day.

Our most successful deployments in the sector specifically benefit from the following features:

- Remote monitoring & control: manage any number of sites with minimal effort
- Allow your guards and technicians to monitor and control on the go with the Sky-Walker3 app
- Straightforward workflows simplify your operator's tasks
- No supplier lock-in: integrate existing and new hardware from any manufacturer
- Your information presented brief and concise with dashboard reporting & statistics

Education

How do you provide efficiency and flexibility for your safety and security, whilst keeping costs across such disparate technologies and functions under control?

Education facilities are often spread over multiple locations, each equipped with various technologies from different manufacturers. There is an overall need for central monitoring with the possibility of expanding. Reacting fast is a must. All this while creating and maintaining a pleasant educational environment for your staff and students.

Taking into account that all education facilities are organized a little differently, we focus on your specific needs and build our integrated solution around them. Goal: Keeping your assets, staff and students harm free & protected while at the same time reducing costs and improving reliability.

Healthcare

The healthcare business is a complex, competitive and strictly regulated world. Using, managing and maintaining all of your (semi) public buildings as a comfortable, safe and secure environment for all your patients, clients and employees is not to be taken for granted.

From private clinic to large hospital or other health facility: Entelec creates an integrated solution tailored to your specific needs and processes.

- Create a secure environment for patients, employees and visitors
- Respond faster and more accurately
- Learn from past events, using easily accessible information from live dashboard, reports & statistics
- Decrease your operational downtime
- Boost your health care quality satisfaction ratings



Telecom

Securing the physical telecom infrastructure has become a huge challenge, especially when taking into account risks such as large-scale power-outages, network failures & cyber-attacks and very strict IT policies. The telecom sector is defined by its amount of different locations. This kind of multisite projects usually have a few special requirements next to general needs, such as:

- Using an umbrella feature over different systems from the same technology.
- Integrated maintenance calendar triggers operators about the systems who need a service intervention. Combined with a polling service, the installer enters his maintenance date into your document management system, allowing specific access on defined dates his technicians using badges.
- Automatic e-mailing service to inform the correct person of certain events
- Reducing costs for security & safety and boosting ROI

Transport

Entelec assist transportation organisations in organising safe, efficient and cost effective transits from people and goods whether by air, rail, road or sea.

Transport facilities are often confronted with challenges such as multiple locations and the difficult task of guaranteeing overall safety in public buildings & general privacy legislations. Previously deployed requirements include:

- Scenarios for fire or intrusion. Sky-Walker requests to start the appropriate scenario, sends out the proper commands and visualises a technical plan listing the objects in question (detectors, escalators, etc) so the operator can verify that the correct actions are taken, follow-up the alarms and intervene where necessary.
- Measuring the uptime for large elevator and escalator installations to be able to fine-tune service interventions, ultimately resulting in higher availability.

Finance

Safety and security is a large contributor to the general reputation and image of a reliable business. Providing a comfortable environment, preventing disruption from power outages, ICT and other installations are major issues.

Exceed your annual synergies and cost savings by bringing all of your different building technologies and processes under the Entelec umbrella. The Sky-Walker Integration Platform provides a central monitoring location for all of these systems and processes and generates the following values:

- Increase general safety & security as well as systems uptime
- Improve operational maintenance and efficiency while at the same time maintaining the open character of semipublic buildings
- Reduce costs from health & safety, energy and maintenance

Entelec Control Systems BVBA

Wetenschapspark 25
3590 Diepenbeek
BELGIUM

+32 (0) 11 30 30 01
+32 (0) 11 30 30 19

www.entelec.be
info@entelec.be

Entelec Control Systems bv

Arnhemseweg 6
3817 CH Amersfoort
NETHERLANDS

+31 (0) 33 460 2303
+31 (0) 33 463 3706

www.entelec.nl
info@entelec.nl

Entelec Control Systems Ltd

Cranmore Drive, Solihull
West Midlands B90 4RZ
UNITED KINGDOM

+44 (0) 121 712 8911

www.entelec.org.uk
info@entelec.org.uk

Entelec Control Systems SARL

1 Rue André Voguet
94200 Ivry-sur-Seine
FRANCE

+33 (0) 1 85 08 40 30

www.entelec.fr
info@entelec.fr