

Brunco AB

Lexevägen 1

SE-806 27 Gävle

SWEDEN

*E-mail: [info@brunco.se](mailto:info@brunco.se)*

*Phone: +46730776561 (Mattias Brundell)*

*+46708263434 (Michael Morsing)*

**Website: [www.brunco.se](http://www.brunco.se)**

*Enquiries can also be directed to the inventor:*

Bryant Hollins

4718 Parker Cres

108 Mile Ranch, BC V0K 2Z0

CANADA

*E-mail: [hollins@easy-motor-toter.com](mailto:hollins@easy-motor-toter.com)*

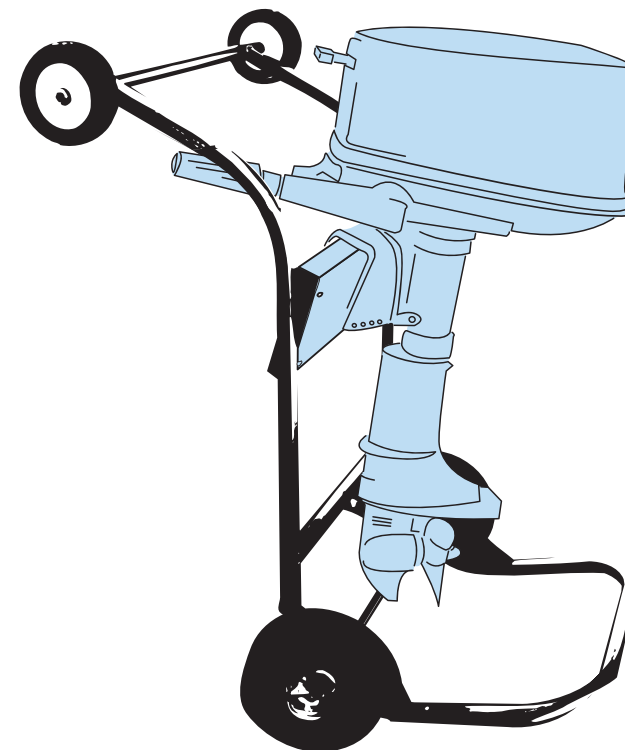
*Phone: (+1)250-395-0588*

**Website: [www.easy-motor-toter.com](http://www.easy-motor-toter.com)**

# EASY-MOTOR-TOTER

By Hollins

**ergonomical  
practical  
steady**



**BRUNCO AB**

Lexevägen 1  
806 27 Gävle  
SWEDEN

**HOLLINS**

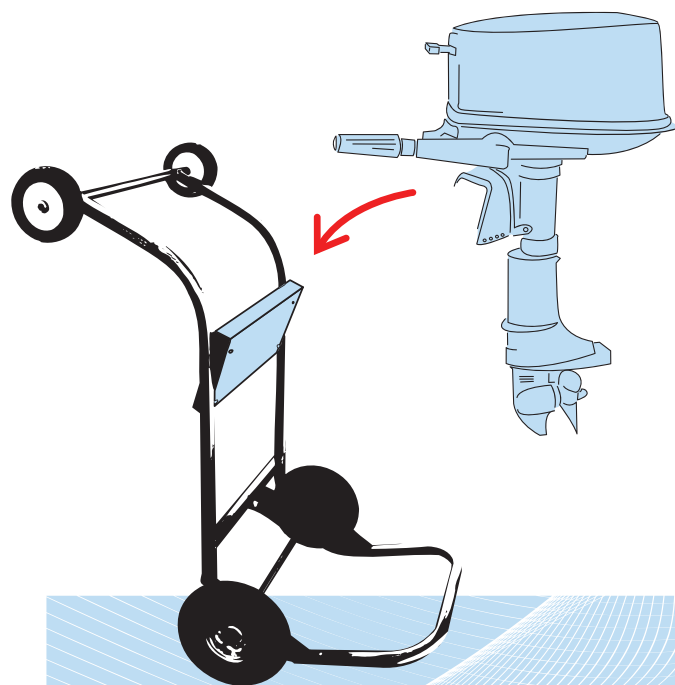
**Klövenäs**  
Group

# EASY-MOTOR-TOTER

## Tired of manhandling that heavy motor?

*The Easy-Motor-Toter* simplifies loading, transporting, and storing your outboard motor.

The simple, rugged design with large wheels allows you to haul your motor over soft or bumpy ground, right to your boat. With wheels on the handlebars, the cart rolls easily into your station wagon, SUV, Van or Pickup.



The tilted frame design holds the motor on an angle when laying in the vehicle to help prevent oil or water on 4 cycle engines from running into the cylinders.

The lower unit of the motor can be tied down to the V-Block "leg rest" to reduce wear on the motor bracket when driving over bumpy gravel or dirt roads.

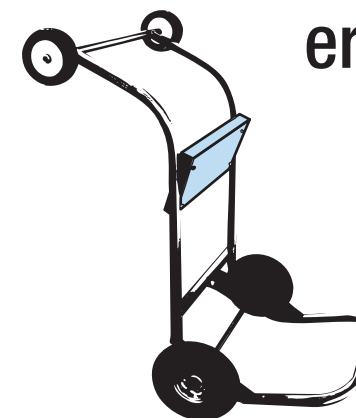
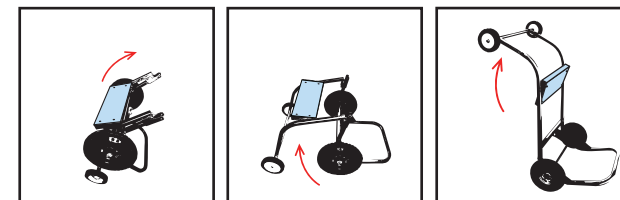
A brake device on the main wheels helps prevent the *Easy-Motor-Toter*, with mounted outboard motor, from moving during car transport and from sliding when parked on the slipway.

The frame is narrow enough - about 71 cm (or 28") wide - to wheel into your basement for winter storage.

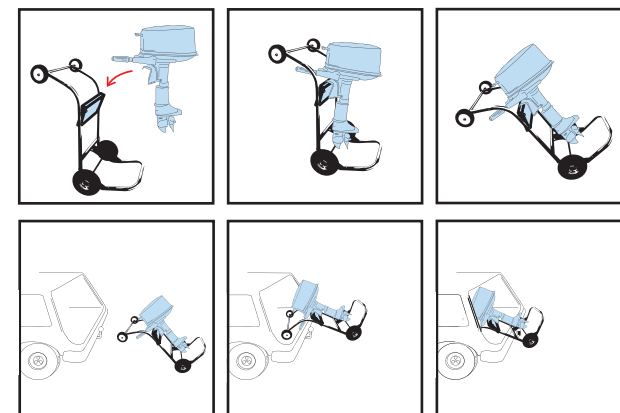
**Need to work on your engine or change oil in the lower unit? *The Easy-Motor-Toter* is also your work stand!**

Rigid and foldable versions, as well as short and long shafted versions, available.

The *Easy-Motor-Toter* is aimed mainly at small and medium motor users, with engines up to about 85 kg (or 187 lbs).



**ergonomical  
practical  
steady**



# EASY-MOTOR-TOTER

US and Canadian patents pending  
Registered Community Design (RCD)  
Reg. no. 001596354

**BRUNCO AB**  
Lexevägen 1  
806 27 Gävle  
SWEDEN