



CURRENT

THE SCIENCE OF SEEING



TURN NIGHT INTO DAY

> ENHANCED SECURITY & SAFETY

CURRENT's Night Navigator™ series are high performance systems with excellent image quality, built for long-range recognition of objects, obstacles, and threats. It enables early decision making and preparedness resulting in increased safety and security.

NN 8000- 360° 360° live panoramic situational awareness platform combined with long-range verification.

NN 8000 Extreme long-range recognition for intelligence and surveillance.

NN 4000 Long-range recognition with option of enhanced awareness and active protection.

NN 3000 Mid-range obstacle recognition for all maritime operations.

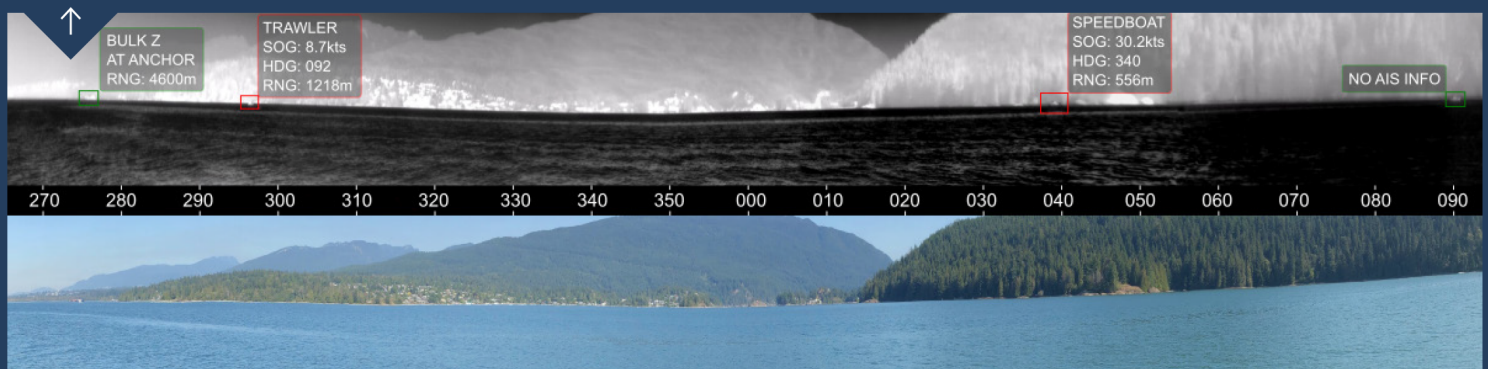
NN 2000 The solution for all budgets for secure navigation in an ultracompact platform.

NN HSC Certified to IMO HSC code, Resolution MSC.94(72)



360° PANORAMIC SITUATIONAL AWARENESS

360° live panoramic situational awareness in infrared alerts the vessel operators to asymmetric threats, while receiving long-range confirmation of targets through the high performance optics in the connected sensor platform.





↓ NOW AVAILABLE IN HD RESOLUTION

COOLED THERMAL IMAGING LONG-RANGE SECURITY

MidWave InfraRed (MWIR), or Cooled Thermal Imaging, offers continuous optical zoom with a narrow field of view for long distance detection, recognition and identification. HD MWIR offers 2.5x the resolution of MWIR for detection, recognition, and identification



↓ NOW AVAILABLE IN HD RESOLUTION

UNCOOLED THERMAL IMAGING MID-RANGE SECURITY

LongWave InfraRed (LWIR), or Uncooled Thermal Imaging, offers mid-range observation and is used in missions requiring 24/7 use. Offering various levels of optical zoom, these systems are an affordable solution for a broad range of uses. HD LWIR is now available to further enhance performance and capabilities with 2.5x better resolution.

SENSORS & CONFIGURATIONS



→ HD DAY

30x optical zoom and best in class low-light sensitivity makes this the perfect companion for the thermal imager.

4K DAY ←

Provides 4x the resolution of HD day for identification of threats at a longer range and sharper image quality. Used in AI for Autonomous Navigation/ Vessels.

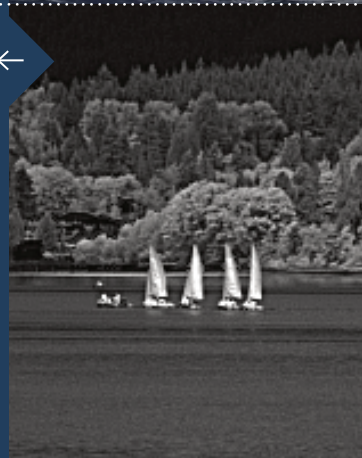


→ IMAGE INTENSIFIED NIGHT VISION

Provides the best object detection in darkness when the temperature of the object blends in with the temperature of its surroundings and for detecting (flashing) lights.

SWIR ←

ShortWave InfraRed (SWIR) can be added to thermal and day to improve visibility in haze, mist, rain, fog and other challenging atmospheric conditions.



SENSOR CONFIGURATIONS

	INFRARED CAMERA (IR)							DAY CAMERA			AVAILABLE SENSORS & FUNCTIONALITIES						
	Thermal Imager	HD IR	Field of View IR	Optical Zoom	Digital Zoom	Human**	NATO***	HD Day Camera	4k Option	Zoom Ratio	Searchlight	Video Tracking	LRF	Laser Dazzler	II Night Vision	SWIR	Laser Illuminator
HSC	LWIR		Fixed 22.0°			-	-										
NN 2000 SERIES																	
2005	LWIR		Fixed 24.8°		4x	0.93 km	2.25 km	✓		30x							
2015	LWIR		Fixed 17.6°		4x	1.3 km	3.2 km	✓		30x							
2017	LWIR		Fixed 12.4°		4x	1.4 km	2.4 km	✓		30x							
2025	LWIR		43° - 8.2°	5x	4x	2.8 km	6.8 km	✓		30x		•					
NN 3000 SERIES																	
3025	LWIR		25° - 6°	4x	4x	2.9 km	7.1 km	✓	•	30x		•					
3030	LWIR		42° - 6.2°	6x	4x	2.8 km	6.8 km	✓	•	30x		•					
3040	LWIR	✓	68° - 10°	6x	4x	2.8 km	6.8 km	✓	•	30x		•					
3050	MWIR		28° - 2°	14x	4x	5.8 km	14.1 km	✓	•	30x		•					
3055	MWIR		32° - 1.8°	20x	4x	6.3 km	15.3 km	✓	•	30x		•	•				
3615	LWIR		Fixed 17.6°		4x	1.3 km	3.2 km	✓	•	30x	✓	•					
3620	LWIR	✓	Fixed 27.8°		4x	1.3 km	3.2 km	✓	•	30x	✓	•					
NN 4000 SERIES																	
4030	LWIR		25° - 4.1°	6x	4x	4.2 km	10.1 km	✓	•	30x		•			•		
4040	LWIR	✓	41° - 6.6°	6x	4x	4.2 km	10.1 km	✓	•	30x		•			•		
4065	MWIR		30° - 1.8°	20x	4x	6.3 km	15.3 km	✓	•	30x		✓	•	•		•	•
4085	MWIR	✓	40° - 2.4°	20x	4x	9.5 km	>20 km	✓	•	30x		✓	•	•		•	•
4425	LWIR		25° - 6°	4x	4x	2.9 km	7.1 km	✓	•	30x		•	✓	✓			
4465	MWIR		30° - 1.8°	20x	4x	6.3 km	15.3 km	✓	•	30x		✓	✓	✓		•	•
4485	MWIR	✓	40° - 2.4°	20x	4x	9.5 km	>20 km	✓	•	30x		✓	✓	✓		•	•
4620	LWIR	✓	68° - 10°	6x	4x	4.2 km	10.1 km	✓	•	30x	✓	✓					
4655	MWIR		32° - 1.8°	20x	4x	6.3 km	15.3 km	✓	•	30x	✓	✓					
4685	MWIR	✓	40° - 2.4°	20x	4x	9.5 km	>20 km	✓	•	30x	✓	✓					
NN 8000 SERIES																	
8040	LWIR	✓	41° - 4.4°	9x	4x	6.3 km	15.2 km	✓	✓	30x		✓					
8042	LWIR	✓	26.5° - 3.3°	7x	4x	8.4 km	>20 km	✓	✓	30x		✓	•	•			
8050	MWIR		11.9° - 0.8°	14x	4x	14.8 km	>20 km	✓	✓	30x		✓	•	•		•	•
8065	MWIR		16° - 0.9°	18x	4x	12.6 km	>20 km	✓	✓	30x		✓	✓	✓		•	•
8085	MWIR	✓	14.5° - 1.2°	12x	4x	19.0 km	>20 km	✓	✓	30x		✓	✓	✓		•	•

II NIGHT VISION = Image Intensified Night Vision

LWIR = Long Wave Infrared (Uncooled thermal imaging 8-14µm)

MWIR = Mid Wave Infrared (Cooled thermal imaging 3-5µm)

SWIR = Short Wave Infrared

LRF = Laser Range Finder

✓ = Standard feature • = Optional feature

Theoretical calculations based on "Johnson Criteria" to achieve a 50% probability for an observer to detect an object, not taking into consideration signal level, detector sensitivity, atmospheric conditions and other factors. 2 pixels on target, used for LWIR and 3 for MWIR.

Human target (1.8m x 0.5m) *NATO target (2.3m x 2.3m)

* Not available on every system, subject to long lead times.

> FEATURES



ENVIRONMENTAL SEALING

Water Ingress Protection (IP) 67.



MIL STANDARD

Designed to MIL-STD 810, MIL-STD 461 available upon request*



OPERATIONAL TEMPERATURE

-20°C to 50°C (option to -40°C).



MOTION RANGE

360° continuous pan and +/-90° tilt.



STABILIZATION

Gyro-stabilization and video stabilization

> MORE SENSORS & CONFIGURATIONS

→ SEARCHLIGHT

Powerful stabilized searchlight for observation and detection at night. Adjustable beam width from 15° to 1°.

LASER DAZZLER ←

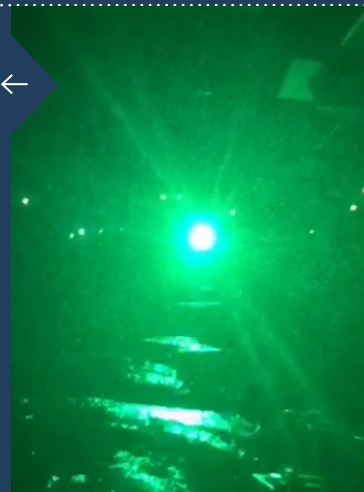
The laser dazzler is an optional sensor that compliments CURRENT's EO/IR systems by adding a non-lethal deterrent.

→ LASER ILLUMINATOR

Illuminate an area of interest in the infrared spectrum, to view with low-light camera during covert operations.

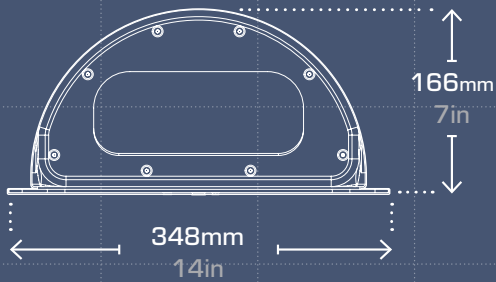
LASER ← RANGEFINDER

Laser Rangefinder (LRF) measures the distance to an obstacle or threat tracked by the camera.

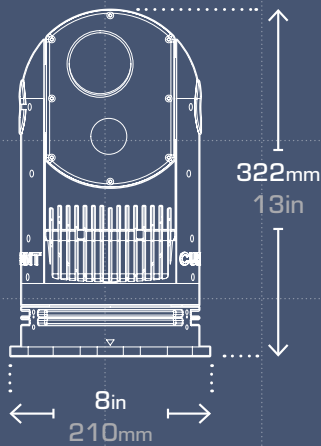


DIMENSIONS

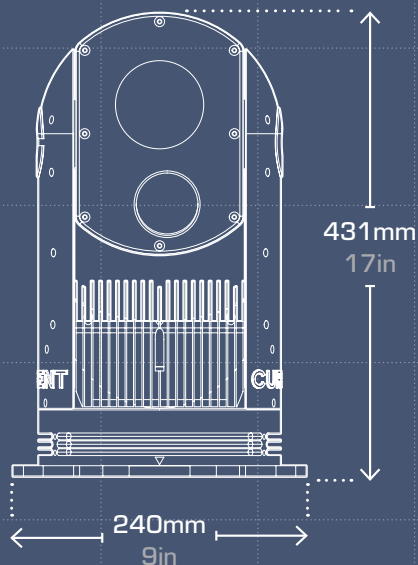
**HSC
SERIES**
5.5kg / 12lbs



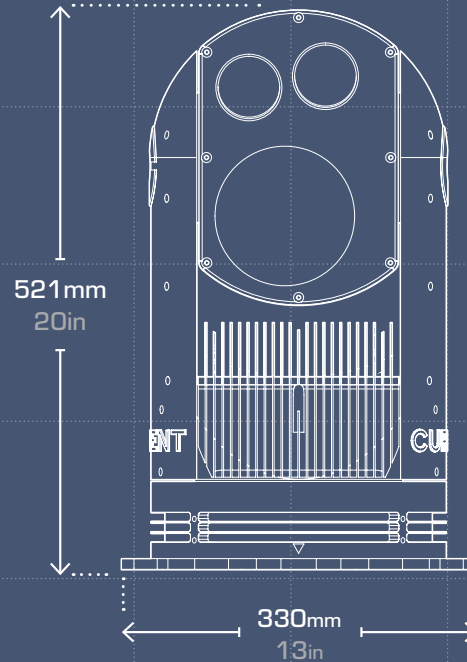
**2000
SERIES**
12kg / 26lbs



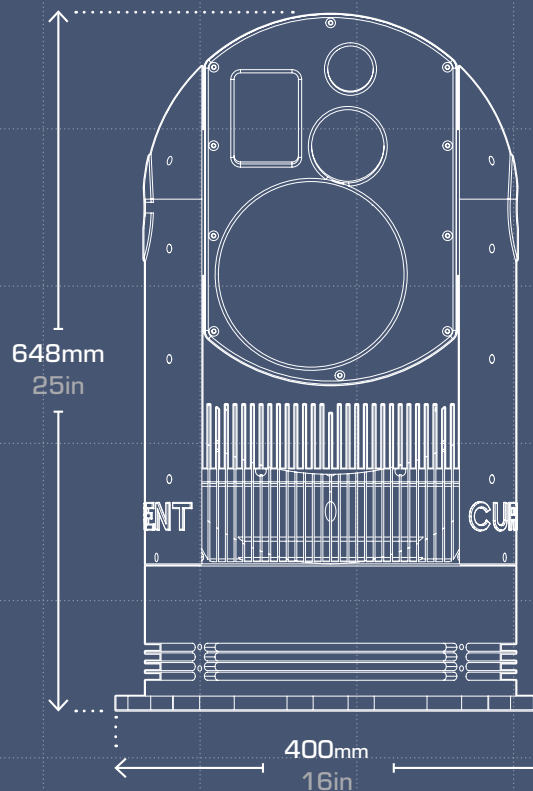
**3000
SERIES**
20kg / 44lbs



**4000
SERIES**
32kg / 70lbs



**8000
SERIES**
55kg / 120lbs



Exact weight depends on sensor specification.

SEEING MORE

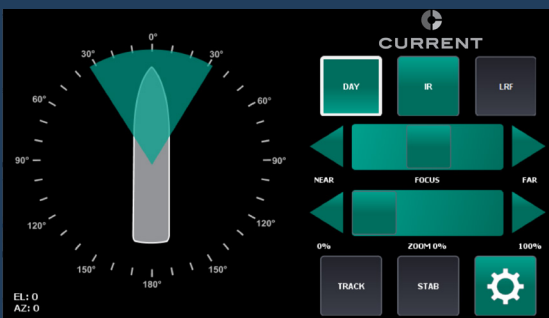
> ...YOUR WAY

Flexible IP network control solutions for onboard remote and autonomous operation.



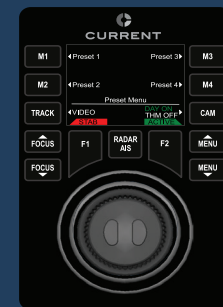
→ VIDEO GUI

Live video feed with full control of all system functions on one interface. Optimized for operation on a touchscreen with USB joystick/RRG or standard PC with trackball/mouse. Can be run on a CURRENT or customer supplied PC or Panel PC with minimum requirements: Windows 10 Pro, 6th generation i5 or i7 processor, 16GB RAM, Zulu OpenJDK version 15.0.1 or JDK FX option.



→ CONTROL GUI

Provided on an 8" Panel PC touchscreen, it can be operated standalone or with USB joystick/RRG for more precise positioning. Main screen provides basic control functions with menus for advanced functions. Requires a separate HD-SDI or RTSP display for video.



→ COMPACT CONTROLLER

Compact solution with integrated 2-button joystick. Provides basic functions through buttons and more advanced functions through on screen menus. Requires a separate HD-SDI or RTSP display for video.

ACCESSORIES

2-BUTTON JOYSTICK

Connects to PC via USB.

Provides intuitive pan, tilt, zoom control of the sensor platform.



RUGGED RIGID GRIP (RRG)

Connects to PC via USB. All critical functions are available in the ergonomic, ambidextrous fixed grip. Precise camera control is achieved while allowing the operator to maintain focus on the live video.



> INTEGRATION OPTIONS



TASK FORCE INTEGRATION

Command and Control System (C2)
Combat Management System (CMS)



VIDEO RECORDING

Network recording of two video streams on VMS or dedicated DVR.



3RD PARTY SYSTEMS

Bridge Interface
HMI, INS, VMS
Security System
Autonomous Navigation AI
Pelco D & ONVIF compatible.



CURRENT

THE SCIENCE OF SEEING

CANADIAN EXPORT REGULATIONS

Equipment subject to Canadian Export regulations. Trans-shipment or diversion from specified end use are prohibited.
Equipment is ITAR free.

WARRANTY

CURRENT is building rugged, maritized, low maintenance systems. Current offers technical training for integrators and supports its worldwide customers through a growing network of local partners, remote support, online troubleshooting and updates.

For more details, please visit
www.currentcorp.com

CANADA

Current Scientific Corporation
1588 Kebet Way
Port Coquitlam, BC, V3C 5M5
CANADA

THE NETHERLANDS

Current Scientific B.V.
Tappersweg 6 F
2031 ET Haarlem



SALES@CURRENTCORP.COM

TEL: +1 604 461 5555

WWW.CURRENTCORP.COM