

**LUMISHORE**



**UNDERWATER LED  
LIGHTING SYSTEMS**



**LUMISHORE**





## Contents

About Lumishore	2
Mounting Types	4
Color Options	6
Beam Angles	8
Online Configurator	8
Lighting Control Systems	10-12
Full Color Change Thru-Hull Underwater Lights	14
Full Color Change Surface Mount Underwater Lights	16
Dual Color Thru-Hull Underwater Lights	18
Dual Color Surface Mount Underwater Lights	20
Single Color Thru-Hull Underwater Lights	22
Single Color Surface Mount Underwater Lights	22
Lumi Cam - Underwater HD Camera	22

**LUMISHORE**





## About Lumishore

### A name recognised throughout the world!

Our vision started in 2008 and was simple: to offer the brightest, high-performance marine lighting systems, that innovate and exceed expectations in terms of quality and function, to create the most beautiful and personalised smart lighting effects, above and below the waterline.

### Innovation is key to everything we do

It's what makes us different and keeps us pushing our boundaries and standards even further, year after year, to provide you with the most beautiful marine lighting systems.

It all starts with innovation, and with you, our customer, understanding your needs, anticipating how they may change and how we can innovate to stay ahead and exceed your expectations.

Dedication and attention to detail resonates deeply with our world class Engineering experts, who ensure that we remain at the forefront of marine lighting innovation.

### Certification



With Lloyds Type Approval - the first to have full safety critical EMI/EMC compliance testing



**LUMISHORE**





# Mounting Types

How your underwater lights are mounted is important. Lumishore has three light mounting options:

## Surface Mount - SMX



- Compact yet extremely powerful with upto 6,100 Fixture Lumens
- Wide 90° beam angle creates a beautiful lighting effect
- Internal/ built-in driver for ease of installation
- Install to hull surface with 3 screws and small piercing for the cable
- Marine Bronze body with BK7 borosilicate glass lens, to withstand the marine environment
- Transom and side mounting

## Thru-Hull - THX



- Most secure mounting type, suitable for transom, side and bottom
- External driver for ease of light unit installation in constrained spaces
- Most powerful Thru-Hull units available - up to 17,000 Fixture Lumens
- Ultra-wide 110° beam angle means the light saturates deep into the water and allows optimum light spacing

## Interchangeable Thru-Hull - TIX



- Most secure mounting type, with the added benefit of an internal LED array and integrated driver for the ability to service from inside the hull and easy installation
- Extremely bright, yet compact design is suitable for uniquely minimal hull cut-outs (as small as 1 1/2"/27mm)



**LUMISHORE**





## Color Options

### Full Color Control EOS Series and RGBW Full Spectrum

The only fully controllable color change underwater lights available on the market, delivering the greatest range of colors, scenes and zones. Due to Lumishore's intelligent, dynamic channel management, EOS underwater lights are brighter in every color and mixed colors.

Unique light discovery and light auto-install function simplifies the system setup and reduces installation time.

Lumishore's EOS systems are 100% compatible with the world's leading MFD's, as well as smart devices, giving you unprecedented lighting control at your fingertips. No additional programming or software required.



### Dual Color Change - SUPRA Series

'2-lights-in-1' in a single high powered fixture. White and blue each run at full power without sacrificing brightness. Synchronized fade and strobe modes, plus unique plug-and-play connectivity to MFDs.



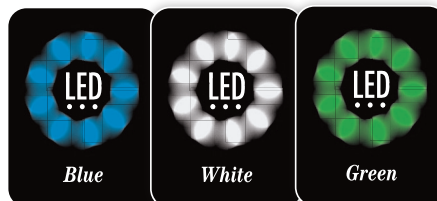
### Single Color - ORA Series

The brightest single-colored lights in the most compact fittings:

Blue: most versatile for changing water conditions

White: best in clear, shallow, sandy waters

Green: best for murky, green or brown waters





**LUMISHORE**





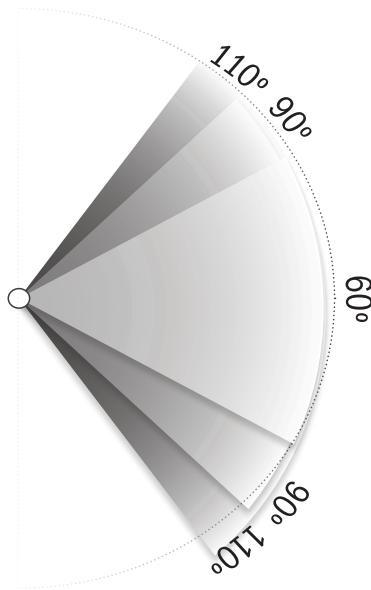
## Beam Angles

Due to their unrivalled brightness, Lumishore underwater lights have the farthest reach together with widest beam angles, allowing the light to penetrate deep into the water, to create a beautiful, uninterrupted halo of light around your vessel.

60° Narrow, focused beam

90° Wide beam

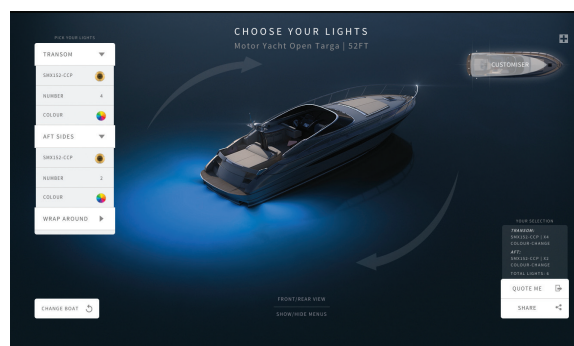
110° Ultra-wide beam



## Configure your lights

Check out our online configurator tool. You can choose your boat style, then test all the various mounting locations, light models, quantity and color options before you buy.

Visit [www.lumishore.com/configurator](http://www.lumishore.com/configurator)





**LUMISHORE**





# Lighting Control Systems

## Lumi-Link Command Center



- Take full control of your lighting directly from your MFD, smart device and/or optional Lumishore STV 2204-i Display
- No other controllers or digital switches are necessary
- Over-the-Air (OTA) allows software updates by connecting to laptop or PC via Wi-Fi
- Required for all Full Color Change EOS Series lights (excl. SMX93)

## SUPRA Installation/ Upgrade Kit (i-Connect Hub & Switch)



- Enhances function of your Dual Color SUPRA lights
- Required for all TIX/THX models and optional for SMX53
- Plug-&-play junction box makes for easy installation - includes the fuses and easy-connect terminals for the lights and the switch

## Lumi-Link SUPRA Bridge



- Full feature control of your Dual Color SUPRA Series light systems from your connected MFD, smart device and/or optional Lumishore STV 2204-i Display (excl. SMX23)
- Lumi-Link's SUPRA Bridge configuration genie will find & configure all lighting fixtures in the system when turned on

## Standard on/off switch (customer supplied)



Provides on/off functions for all your Single Color ORA Series models, SUPRA Series Models SMX23, SMX53, and RGBW SMX93



**LUMISHORE**

**LUMISHORE**







## Lumi-Link MFD Plug-and-Play

Take full control of your Lumishore EOS or SUPRA Series underwater lights and Lumishore LUX above water lights directly from your MFD and/or optional STV2204-i Display. Simply connect the Lumi-Link Command Center to your MFD with a single plug-&-play cable. The intuitive interface includes:

- A simple-to-use color wheel
- Full color selection
- Horizontal slide bars for quick adjustments to lighting intensity and white balance in each color
- Control lighting across multiple zones
- Choose from preprogrammed effect modes like strobe, sweep or cycle and the unique 'Sound-to-Light'

Current\* compatible MFD models include:

**Garmin** OneHelm™

**Raymarine** Axiom and Axiom Pro

**Simrad** NSO EVO3 and EVO2, NSS EVO3 and selected Go models (Go7 XSR/ Go9/ Go12)

**B&G** Zeus3 Glass Helm, Zeus3 and Vulcan

**Furuno** NavNet TZtouch3 series (TZT12F/ TZT16F/ TZT19F)

## STV 2204-i Display

- Optional secondary display\*\*
- Dedicated glass-bridge style touch display and rotary dial
- Easy to manipulate when cruising or with wet/salty hands
- Built in Wi-Fi control
- Compatible with Full Color Change EOS Series and SUPRA Series with Bridge Module (excl. SMX23)

\* See website for latest updates

\*\* Can be used in addition to, or instead of an MFD



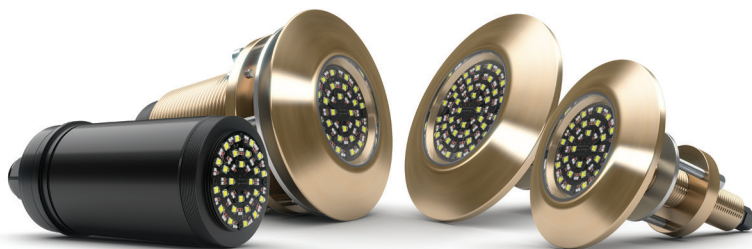
**LUMISHORE**







## EOS Full Color Control Thru-Hull Underwater Lighting



### Undisputed leaders in high-performance full color control underwater lights

Lumishore's EOS Thru-Hull systems are the brightest color changing lights on the market, with the widest beam angles. Available in two mounting types - standard fit Thru-Hull (THX) and Thru-Hull Interchangeable (TIX). THX models have standard 1" fittings with an external driver and TIX models have an internal driver and can be serviced from inside the hull, without hauling the boat.

- Control colors, modes & special effects directly from your MFD and/or the optional STV 2204-i Display with Lumi-Link Command Center
- Control via any internet capable device connected to the boat's Wi-Fi via the MFD or optional STV2204i
- Brightness levels up to 15,500 verified fixture lumens
- Flush-fit design and suitable for transom, side and bottom mounting
- All models deliver an ultra-wide 110° beam angle for a beautiful halo effect
- EOS enables automatic light discovery and setup for simple installation

EOS	TIX403	TIX803	THX803	TIX1603	THX1603
LUMENS/ FIXTURE LUMENS	15,570/ 7,000	23,625/ 10,500	23,625/ 10,500	34,875/ 15,500	34,875/ 15,500
BEAM ANGLES	110°	110°	110°	110°	110°
CURRENT (12/24 V DC)	5.8A /2.9A	8.8A / 4.4A	8.8A / 4.4A	6.5A 24 V DC only	6.5A 24 V DC only
RECOMMENDED BOAT SIZE	7-18m/ 25-60ft	7-100m/ 25-330ft	7-100m/ 25-330ft	18m-100m/ 60-330ft	18m-100m/ 60-330ft

### Compatible Controllers/Displays

Take full control of your EOS lighting system directly from your MFD and/or the optional dedicated STV2204i Display. Command Center required.





**LUMISHORE**







## EOS Full Color Control and RGBW Surface Mount Underwater Lighting



### Unmatched in ease of installation

Lumishore's marine bronze color-change surface mount lights are available in 2 model types. As well as efficiency and performance, our surface mount lights are unmatched in ease of installation. Whether you are setting the mood for a boating adventure, fishing or having a party on board, you can choose the perfect color to illuminate the water below. Both feature a wide 90° beam angle and an extremely compact low profile.

- SMX153 (EOS full color change) is compatible with Lumi-Link, offering features such as Wi-Fi control, Sound-to-Light, synchronized fade, sweep and strobe, directly from your compatible MFD and/or optional STV2204-i Display
- SMX93 (RGBW color change) uses a standard on/off switch; toggle to freeze or cycle colors
- Brightness levels up to 5,500 verified fixture lumens
- EOS enables automatic light discovery and set up for simple installation
- Can be fitted nearly anywhere on the hull including stepped hulls, transoms, and sides

RGBW & EOS	SMX93	SMX153
LUMENS/ FIXTURE LUMENS	11,475/5,100	12,375/5,500
BEAM ANGLES	90°	90°
CURRENT (12/24 V DC)	3.5A /1.75A	4.0A / 2.0A
RECOMMENDED BOAT SIZE	6-9m / 20-25ft	7.5-12m / 25-40ft

### Compatible Controllers/Displays

Control SMX153 lights directly from your MFD and/or optional STV2204-i Display (Lumi-Link required). Control SMX93 lights with a standard on/off switch to toggle to cycled colors.





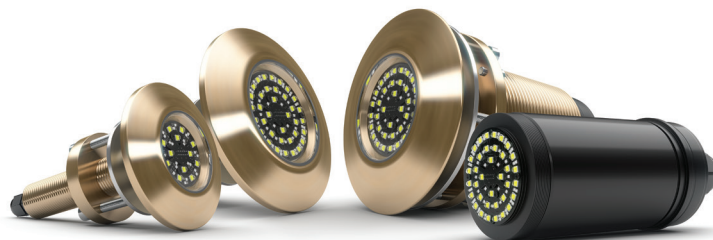
**LUMISHORE**







## SUPRA Dual Color Thru-Hull Underwater Lighting



### Full power dual-colored lights without sacrificing brightness

Lumishore's SUPRA Thru-Hull systems are available in two mounting types - standard fit Thru-Hull (THX) and Thru-Hull interchangeable (TIX) with brightness levels up to 17,000 fixture lumens. THX models are standard 1" fittings with an external driver and TIX models have an internal driver and can be serviced from inside the hull, without hauling the boat.

- All deliver an ultra-wide 110° beam angle for the ultimate halo effect
- Easily switch colors, fade colors, adjust brightness, and strobe in two speeds
- Flush-fit design, suitable for transom, side and bottom mounting
- Lumi-Link compatible for direct control from your MFD and/or optional Lumi-Link STV 2204-i Display (requires the Lumi-Link SUPRA Bridge)

SUPRA	TIX403	THX403	TIX803	THX803	TIX1603	THX1603
LUMENS/ FIXTURE LUMENS	16,650/ 7,400	16,650/ 7,400	27,000/ 12,000	27,000/ 12,000	38,250/ 17,000	38,250/ 17,000
BEAM ANGLES	110°	110°	110°	110°	110°	110°
CURRENT (12/24 V DC)	6.4A/3.2A	6.4A/3.2A	8.8A/4.4A	8.8A/4.4A	6.5A 24V DC only	6.5A 24V DC only
RECOMMENDED BOAT SIZE	7-18m/ 25-60ft	7-18m/ 25-60ft	7-100m/ 25-330ft	7-100m/ 25-330ft	18m-100m/ 60-330ft	18m-100m/ 60-330ft

### Compatible Controllers/Displays

Control your SUPRA Series Thru-Hull underwater lights with the SUPRA i-Connect Hub & Switch. For direct control of your lights from your compatible MFD and/or the STV2204-i add the SUPRA Lumi-Link Bridge.





**LUMISHORE**







## SUPRA Dual Color Surface Mount Underwater Lighting



**2-in-1 (blue and white) in a single fixture - each color run at full power**

Lumishore's bronze surface mount lights are built with the same high-quality marine grade bronze and borosilicate glass lens as the thru-hull range to withstand the harsh marine environment. At just 70-95mm (2-3/4" - 3-3/4") diameter, they can be fitted nearly anywhere on the hull including stepped hulls, transoms, and hull sides of nearly any type of boat.

- Full power dual-colored lights without sacrificing brightness
- Both models feature a wide 90° beam angle
- 2,500- 6,100 tested and proven fixture lumens
- SMX53 is Lumi-Link compatible for direct control from your MFD and/or the optional STV2204-i Display (requires the Lumi-Link SUPRA Bridge)
- Both models feature an internal driver
- Plug-and-play connectors for simplified installation

SUPRA	SMX23	SMX53
LUMENS/ FIXTURE LUMENS	5,625/2,500	13,725/6,100
BEAM ANGLES	90°	90°
CURRENT (12/24 V DC)	2.5A (12 V DC only)	5.3A/2.6A
RECOMMENDED BOAT SIZE	5.5-7.5m/18-25ft	7.5-12m/25-40ft

### Compatible Controllers/Displays

Control SMX53 lights with a standard on/off switch or the SUPRA i-Connect Hub & Switch for additional features. For direct control from your compatible MFD add the SUPRA Lumi-Link Bridge Module. Control SMX23 lights with a standard user-supplied on/off switch to toggle on colors and effects.





**LUMISHORE**







## ORA Single Color Thru-Hull Underwater Lighting

TIX202 is the world's slimmest Interchangeable thru-hull light, delivering a focused 60° beam angle and is available in blue, white or green. The TIX404 is a compact, low profile interchangeable thru-hull, with an ultra-wide 110° beam angle - available in single white. Both models can be serviced from inside the hull without hauling and have a 3-year warranty.

THX203 is an ultra-slim thru-hull, with a small hull cut out requirement of only 5/8" (16.5mm). This light features an ultra-wide 110° beam angle, is available in blue or white and has a 2-year warranty.

- Suitable for transom, side hull or bottom installations
- Feature an internal driver



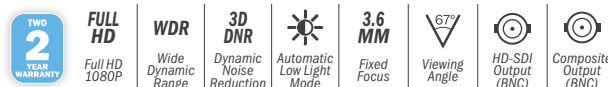
## ORA Single Color Surface Mount Underwater Lighting

Specifically designed for smaller boats, the SMX11 offers unmatched light output and optics for a light of its size. Available in blue, white or green, it features 1,100 fixture lumens, a focused 60° beam and a 1 year warranty. SMX53 B is available in blue, delivers 3,000 fixture lumens, a 90° beam and has a 2 year warranty. Both models are suitable for transom mounting.

- Easy to install
- Both models feature an internal driver

ORA	TIX202	TIX404	THX203	SMX11	SMX53 B
LUMENS/ FIXTURE LUMENS	9,225/4,100	10,125/4,500	12,600/5,600	2,475/1,100	6,750/3,000
BEAM ANGLES	60°	110°	110°	60°	90°
CURRENT (12/24 V DC)	4.0A/1.9A	4.0A/2.0A	4.9A/2.4A	1A 12V DC only	1.7A/0.75A
RECOMMENDED BOAT SIZE	7.5-24m/25-80ft	7.5-24m/25-80ft	7.5-24m/25-80ft	4.5-7m/15-24ft	5.5-7.5m/18-25ft

## Lumi-Cam Underwater HD Camera



Lumi-Cam brings all the amazing detail of magnificent sea life and beautiful underwater terrain to life in vivid high-definition color. The world's smallest Full HD Mega Pixel (1080p) underwater camera is compact and 'flush-fit' in design, allowing it to be mounted nearly anywhere on the hull. It's integrated internal module makes for simple installation.

ORA Series underwater lights are controlled by a standard user supplied on/off switch







Unit 2, Technium 1, Kings Road, Swansea, SA1 8PH, UK  
+44(0)1792 398500 | [sales@Lumishore.com](mailto:sales@Lumishore.com)

7127 24th Court East, Sarasota, FL 34243, USA  
(941) 405-3302 | [sales@LumishoreUSA.com](mailto:sales@LumishoreUSA.com)